

# 19" CABINETS

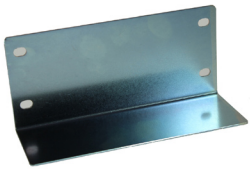
## Attachment Set



- Nickel-plated M6 x 15mm locking bolt with combi slotted/pozi head, PA washer, M6 caged nut with stainless-steel cage
- Pack of 44

TYPE NO.	DESCRIPTION
CAX000001	Attachment set

## Front Guides Mounting



- Attached to rack by two anchoring points with M6 bolts.
- Made of steel, 2mm thick
- Zinc plated coating
- 1 Pair of guides and assembly hardware

TYPE NO.	DESCRIPTION
CAXFMG001	Front guide Mounting

## LX Wheel Kit



- Set of 4 double rotating wheels with rubber rolling band or polyamide.
- Bracket made of stamped steel, with double roll of balls
- Maximum dynamic load acceptable per set: 2.400N/240 Kg (Standard), 3200N/320 Kg. (Heavy duty), and 800N/80 Kg (CamRack-QX)

TYPE NO.	DESCRIPTION
CLX000001	LX Wheel Kit

## Cable Guides Clamps

- Manufactured in steel
- Standard finish: Epoxy paint similar to RAL 9004
- Pack quantity x1



TYPE NO.	DESCRIPTION
CAX19CGC1	1U Guide
CAX19CGC2	2U Guide

## Clip-on Support Guides

- Made of steel, 2mm thick
- Quick attachment to the rack, without bolts
- Zinc plated coated
- 1 pair of guides, 4 stoppers



TYPE NO.	DEPTH
CAXCSG345	345mm
CAXCSG545	545mm

# 19" CABINETS

## Side Mount Tray



TYPE NO.	WIDTH	DEPTH
CAXSMT350	424mm	350mm

- Manufactured in steel, 1.5mm thick.
- Easy assembly, attached to the rack at four anchoring points with M6 bolts
- Attachment points adaptable to variations in the depth of the 19" sections
- Recommended maximum static load: 60 Kg
- Standard ventilation slots
- Colour epoxy paint, anthracite
- One tray with mounting hardware

## Cantilever Tray

TYPE NO.	U	DEPTH
CAX2TY180	2U	180mm
CAX2TY280	2U	280mm
CAX2TY350	2U	350mm
CAX2TY400	2U	400mm



- Manufactured in steel, 1.5mm thick.
- 19" assembly with four anchoring points on the front sections
- Recommended maximum static load: 10/20 Kg
- Standard ventilation slots
- Front fastening height 2U
- One tray with mounting hardware
- Standard depths 180, 280, 350, 400mm
- Grey graphite epoxy paint, anthracite
- 1 tray (screws not included)

UNIVERSAL  
ENCLOSURES

HAND  
HELD  
CASES

HEAVY  
DUTY  
ENCLOSURES

DIN  
RAIL  
BOXES

INTERFACE  
SUPPORTS

CONTROL  
STATIONS

DIECAST  
& METAL  
BOXES

DESKTOP &  
INSTRUMENT  
CASES

POTTING  
BOXES

19"  
ENCLOSURES

19"  
SUBRACKS

CUSTOM  
SIZED  
ENCLOSURES

CUSTOM  
SERVICES

