

För icke direkt toleranssatta mått gäller toleransklass
General tolerances if not otherwise stated

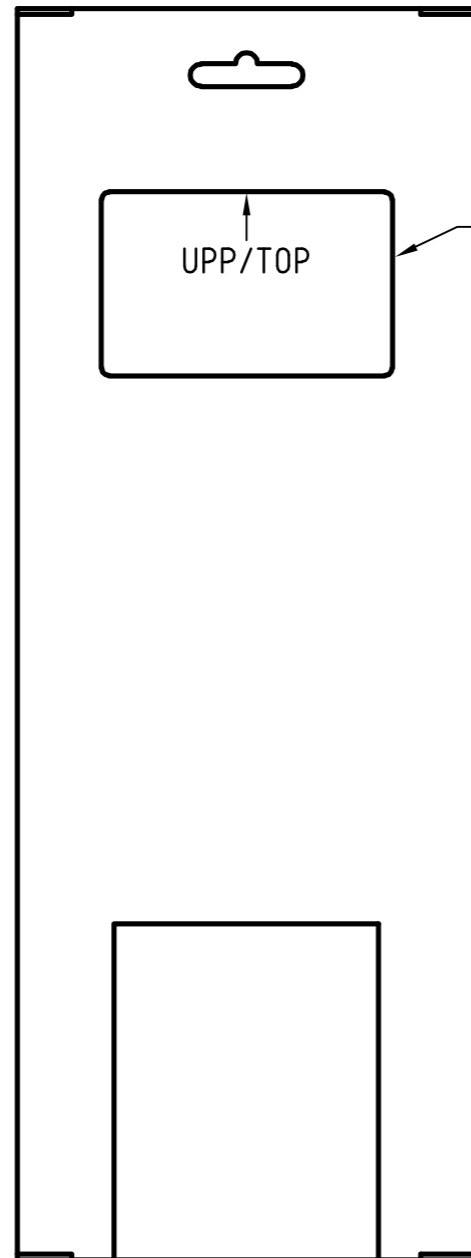
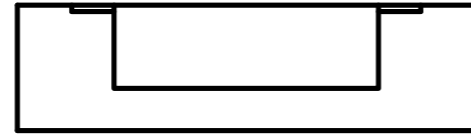
NOM DIM MM		TOL CLASS		
From	To	A	B	C
(1)	6	±0.05	±0.1	±0.2
(6)	30	±0.1	±0.2	±0.5
(30)	100	±0.15	±0.3	±0.8
(100)	300	±0.2	±0.5	±1.2
(300)	1000	±0.3	±0.8	±2

Hål / Holes H13

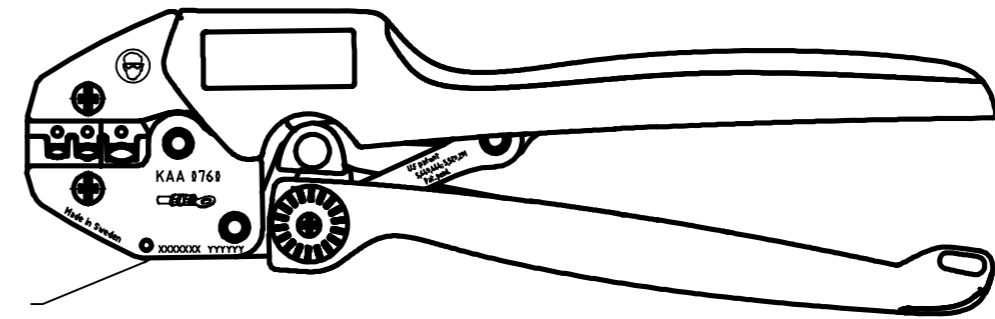
Skarpa kanter brutna där ej annat anges.
No sharp edges unless otherwise specified.

Övriga generella toleranser enligt ritning 4100-4644.
Additional general tolerances in accordance with drawing 4100-4644.

Denna ritning är Pressmaster AB:s egendom. Skyddad av gällande lag.
This drawing is the property of Pressmaster AB. Protected in accordance with prevailing law.



4100-9933



4300-3686

FÖRSPÄNNING / PRELOAD : 170±20 N

TOLKMÅTT / GAUGE DIMENSIONS :		
URTAG NEST	GÅTOLK GO	STOPPTOLK NO GO
RÖD/RED	∅ 2.41	∅ 2.61
BLÅ/BLUE	∅ 2.56	∅ 2.76
GUL/YELLOW	∅ 3.60	∅ 3.80

Rev	Change order	Change: A = Added W = Was D = Deleted	Date	Sign
7	P2751	Ändrad enligt kund/ Changed according the customer	091103	SE

Material		Behandling/Treatment			Status Frisläppt	
Konstr./Design CF	Ritad/Drawn TGW	Datum/Date 2009-09-23	Skala/Scale 1:2	Kontr./Checked IP	Godk./Approved NE	Ämne/Blank
pressmaster ®			Benämning/Denomination Krimptång 267-3133 CRIMPING TOOL KAA 0760		Vikt/Weight,gram 43002364	Art grp 012
ISO 9001 REG NR FM13647					Ritn nr./Drawing no 43002364	REV 007