



# SP60

**TYPICAL APPLICATIONS** Vacuum and steam cleaners

- FUNCTIONS**
- SPST, momentary or not
  - SPST, illuminated or not
  - DPST, illuminated or not

**CYCLE No.** 50.000

**CUT OUT** ø 25 mm

**AMBIENT TEMPERATURE** 120 °C

**GWT** 850 °C

**GWT NO FLAME (<2sec)** 750 °C on demand



S P 6 0

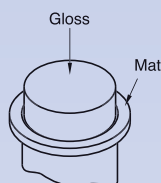
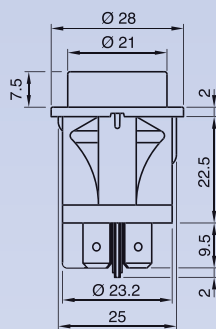
?

## DRAWING

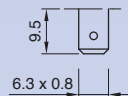
## TERMINAL



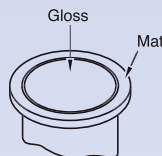
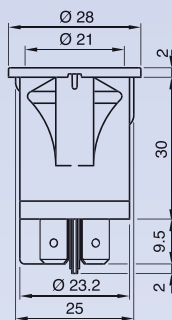
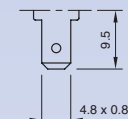
WATERPROOF CAP



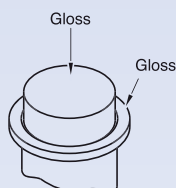
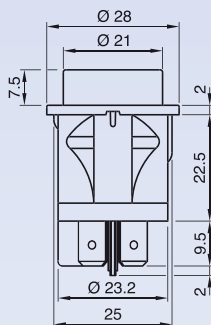
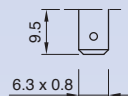
1



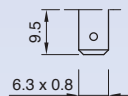
A



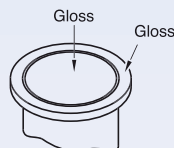
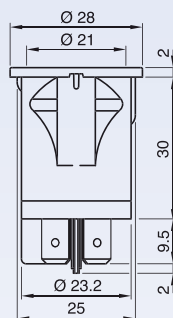
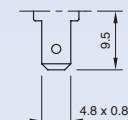
2



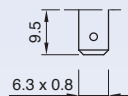
4

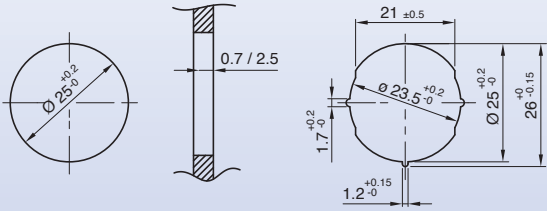


D



5





S	P	6	0	TERMINAL	FUNCTION	RATING	BODY COLOUR	BUTTON COLOUR	MARKING COLOUR	MARKING	0	0
---	---	---	---	----------	----------	--------	-------------	---------------	----------------	---------	---	---

?	?	?	?	?	?	?	0	0
---	---	---	---	---	---	---	---	---

**FUNCTION      RATING      BODY COLOUR      BUTTON COLOUR      MARKING COLOUR      MARKING**

**1**

**2**

**4**

**6**

**8**

**7**

16 (6) A / 250 VAC  
10 (4) 250 V - 5E4  
10 (4) A / 400 VAC  
T120/55 °C  
EN 61058

16 A - 125 / 250 VAC  
1/4 HP / 125 VAC  
1/2 HP / 250 VAC  
T95 °C  
UL 1054

**C**

16 (6) A / 250 VAC  
10 (4) 250 V - 5E4  
10 (4) A / 400 VAC  
T120/55 °C  
EN 61058

**1** black

**2** white

**X** custom

**M** white

**N** black

**R** red

**ILLUMINATED** ✨

**G** red

**H** orange

**E** green

**L** white

**X** custom

No lens

**0** white

**0** none

**1** black

**2** white

**X** custom

**0**

**7**

**D**

**E**

**K**

**X**

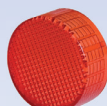
# ACCESSORIES



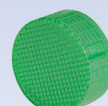
SP60T1N0000



SP60T1M0000



SP60T1G0000



SP60T1E0000

Other colours available on demand.