

2201682
<https://www.phoenixcontact.com/in/products/2201682>

Please be informed that the data shown in this PDF document is generated from our online catalog. Please find the complete data in the user documentation. Our general terms of use for downloads are valid.



DIN rail housing, Complete housing with metal foot catch, tall design, with vents, width: 45.2 mm, height: 99 mm, depth: 113.65 mm, color: light gray (similar RAL 7035), cross connection: DIN rail connector (optional), number of positions cross connector: 5

Your advantages

- Easy installation
- Available in overall widths from 6.2 mm ... 90 mm, modular extension possible
- Variety of connection technology
- Can be mounted on the DIN rail
- With DIN-rail-mountable bus connector and power connector system as an option
- Transparent front cover can be swiveled

Commercial data

Item number	2201682
Packing unit	10 pc
Minimum order quantity	10 pc
Sales key	*****
Product key	ACHABA
GTIN	4046356902304
Weight per piece (including packing)	87.01 g
Weight per piece (excluding packing)	88.5 g
Customs tariff number	85389099
Country of origin	DE

Technical data

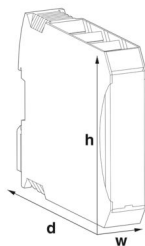
Notes

Assembly note	Please observe the application note in the download area.
Recommendation	Material of contact pads for bus connector, galvanic gold (hard gold)

Product properties

Product type	Complete housing
Housing type	DIN rail housing
Housing series	ME-MAX
Product family	ME MAX 45..
Type	Lower housing parts with vents, housing cover necessary to complete the module
Number of positions	24
	40
Max. number of positions	40 (pitch: 3.5 mm)
	32 (pitch: 5 mm)
	24 (pitch: 7.25 mm/7.5 mm)
Number of rows	1
	3
Type	Complete housing with metal foot catch, tall design
Ventilation openings present	yes

Dimensions

Dimensional drawing	
Width	45.2 mm
Height	99 mm
Depth	113.65 mm
Depth from top edge of DIN rail	107 mm

PCB design

PCB thickness	1.4 mm ... 1.8 mm
---------------	-------------------

Material specifications

Color (Housing)	light gray (RAL 7035)
Flammability rating according to UL 94	V0

CTI according to IEC 60112	600
Housing material	PA
Surface characteristics	untreated

Environmental and real-life conditions

Power dissipation single housing for 20 °C

Ambient temperature	20 °C
Reduction factor	1
Mounting position	vertical
Power dissipation	8.2 W

Power dissipation single housing for 30 °C

Ambient temperature	30 °C
Reduction factor	0.91
Mounting position	vertical
Power dissipation	7.45 W

Power dissipation single housing for 40 °C

Ambient temperature	40 °C
Reduction factor	0.81
Mounting position	vertical
Power dissipation	6.65 W

Power dissipation single housing for 50 °C

Ambient temperature	50 °C
Reduction factor	0.7
Mounting position	vertical
Power dissipation	5.75 W

Power dissipation single housing for 60 °C

Ambient temperature	60 °C
Reduction factor	0.57
Mounting position	vertical
Power dissipation	4.65 W

Power dissipation single housing for 70 °C

Ambient temperature	70 °C
Reduction factor	0.49
Mounting position	vertical
Power dissipation	4 W

Vibration test

Specification	IEC 60068-2-6:2007-12
Frequency	10 - 150 - 10 Hz
Sweep speed	1 octave/min
Amplitude	0.15 mm (10 Hz ... 58.1 Hz)

2201682

<https://www.phoenixcontact.com/in/products/2201682>

Acceleration	2g (58.1 Hz ... 150 Hz)
Test duration per axis	2.5 h
Test directions	X-, Y- and Z-axis

Glow-wire test

Specification	IEC 60695-2-11:2014-02
Temperature	850 °C
Time of exposure	30 s

Mechanical strength / tumbling barrel

Specification	IEC 60998-1:2002-12
Height of fall	50 cm
Frequency	10

Shocks

Specification	IEC 60068-2-27:2008-02
Pulse shape	Half-sine
Acceleration	15g
Shock duration	11 ms
Number of shocks per direction	3
Test directions	X-, Y- and Z-axis (pos. and neg.)

Degree of protection (IP code)

Specification	IEC 60529:1989-11 + AMD 1:1999-11 + AMD 2:2013-08
---------------	---

Ambient conditions

Max. IP code to attain	IP20
Ambient temperature (operation)	-40 °C ... 105 °C (depending on power dissipation)
Ambient temperature (storage/transport)	-40 °C ... 55 °C
Ambient temperature (assembly)	-5 °C ... 100 °C
Relative humidity (storage/transport)	80 %

PCB data

Number of PCB holders	2
Type of PCB mount	Latching
Thickness of the PCB	1.4 mm ... 1.8 mm

Mounting

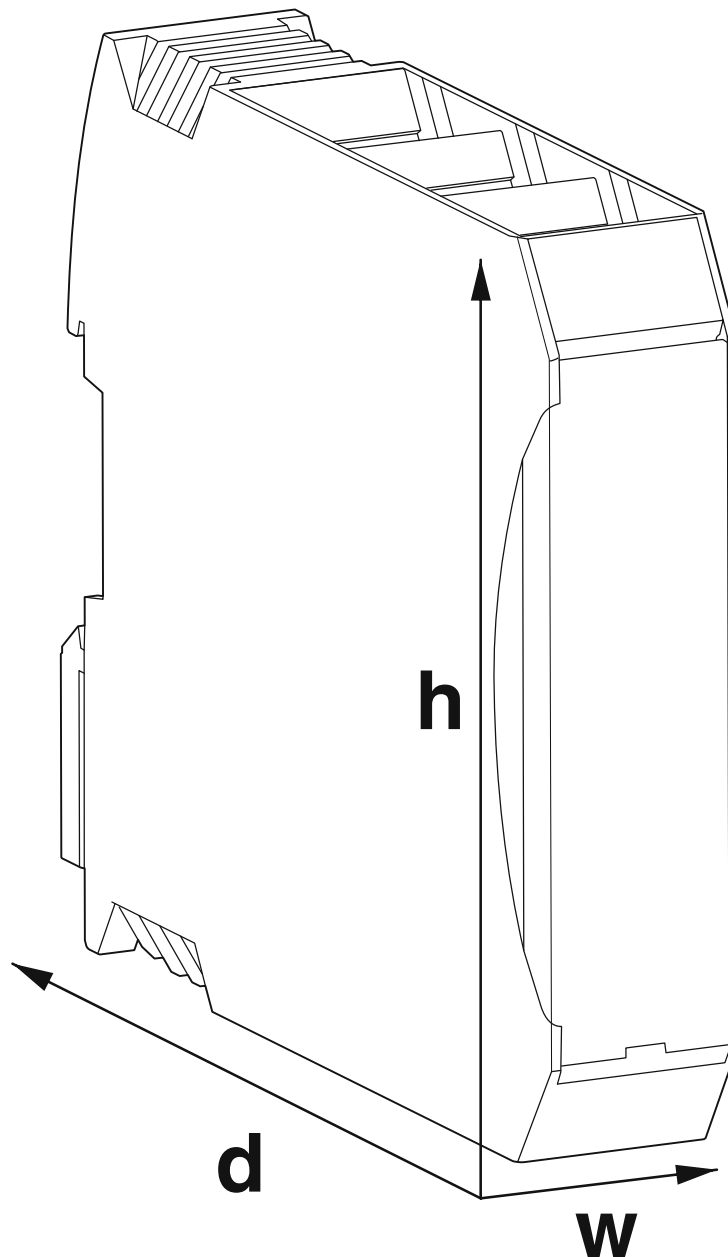
Mounting type	DIN rail mounting
---------------	-------------------

Packaging specifications

Type of packaging	packed in cardboard
Outer packaging type	Carton

Drawings

Dimensional drawing



Schematic figure for illustrating the item dimensions. The figure is not of the desired product. For further details, refer to the product drawings in the "Downloads" tab.

ME MAX 45 3-U1 KMGY - Electronics housing



2201682

<https://www.phoenixcontact.com/in/products/2201682>

Approvals

🔗 To download certificates, visit the product detail page: <https://www.phoenixcontact.com/in/products/2201682>



UL Recognized

Approval ID: E240868

ME MAX 45 3-U1 KMGY - Electronics housing



2201682

<https://www.phoenixcontact.com/in/products/2201682>

Classifications

ECLASS

ECLASS-11.0	27182702
ECLASS-13.0	27190101

ETIM

ETIM 9.0	EC001031
----------	----------

UNSPSC

UNSPSC 21.0	31261500
-------------	----------

Environmental product compliance

EU RoHS	
Fulfills EU RoHS substance requirements	Yes, No exemptions
China RoHS	
Environment friendly use period (EFUP)	EFUP-E
	No hazardous substances above the limits
EU REACH SVHC	
REACH candidate substance (CAS No.)	No substance above 0.1 wt%

2201682

<https://www.phoenixcontact.com/in/products/2201682>

Mandatory accessories

MCO 1,5/ 5-G1L-3,5 KMGY - PCB header

2278380

<https://www.phoenixcontact.com/in/products/2278380>



PCB headers, nominal cross section: 1.5 mm², color: light gray, nominal current: 8 A, rated voltage (III/2): 160 V, contact surface: Sn, contact connection type: Pin, number of potentials: 5, number of rows: 1, number of positions: 5, number of connections: 5, product range: MCO 1,5/...-G1L, pitch: 3.5 mm, mounting: Wave soldering, pin layout: Linear pinning, solder pin [P]: 2 mm, plug-in system: COMBICON MC 1,5, Pin connector pattern alignment: Orthogonal, locking: without, type of packaging: packed in cardboard, Product with pin output on left side

MCO 1,5/ 5-G1R-3,5 KMGY - PCB header

2278351

<https://www.phoenixcontact.com/in/products/2278351>



PCB headers, nominal cross section: 1.5 mm², color: light gray, nominal current: 8 A, rated voltage (III/2): 160 V, contact surface: Sn, contact connection type: Pin, number of potentials: 5, number of rows: 1, number of positions: 5, number of connections: 5, product range: MCO 1,5/...-G1R, pitch: 3.5 mm, mounting: Wave soldering, pin layout: Linear pinning, solder pin [P]: 2 mm, plug-in system: COMBICON MC 1,5, Pin connector pattern alignment: Orthogonal, locking: without, type of packaging: packed in cardboard, Product with pin output on right side

2201682

<https://www.phoenixcontact.com/in/products/2201682>

MSTBO 2,5/ 4-G1PL GY7035 - PCB header

2200325

<https://www.phoenixcontact.com/in/products/2200325>



PCB headers, nominal cross section: 2.5 mm², color: light gray, nominal current: 16 A, rated voltage (III/2): 320 V, contact surface: Sn, contact connection type: Pin, number of potentials: 4, number of rows: 1, number of positions: 4, number of connections: 4, product range: MSTBO 2,5/-G1PL, pitch: 5 mm, mounting: Wave soldering, pin layout: Linear pinning, solder pin [P]: 3.5 mm, number of solder pins per potential: 1, plug-in system: COMBICON MSTB 2,5, Pin connector pattern alignment: Orthogonal, locking: without, type of packaging: packed in cardboard, Product with pin output on left side

MSTBO 2,5/ 4-G1PR GY7035 - PCB header

2200326

<https://www.phoenixcontact.com/in/products/2200326>



PCB headers, nominal cross section: 2.5 mm², color: light gray, nominal current: 16 A, rated voltage (III/2): 320 V, contact surface: Sn, contact connection type: Pin, number of rows: 1, number of positions: 4, product range: MSTBO 2,5/-G1PR, pitch: 5 mm, mounting: Wave soldering, pin layout: Linear pinning, solder pin [P]: 3.5 mm, number of solder pins per potential: 1, plug-in system: COMBICON MSTB 2,5, Pin connector pattern alignment: Orthogonal, locking: without, type of packaging: packed in cardboard, Product with pin output on right side

2201682

<https://www.phoenixcontact.com/in/products/2201682>

GMSTBO 2,5 HV/ 3-GL-7,25 THR - PCB header

2199663

<https://www.phoenixcontact.com/in/products/2199663>



PCB headers, nominal cross section: 2.5 mm², color: black, nominal current: 16 A, rated voltage (III/2): 630 V, contact surface: Sn, contact connection type: Pin, number of potentials: 3, number of rows: 1, number of positions: 3, number of connections: 3, product range: GMSTBO 2,5 HV, pitch: 7.25 mm, mounting: THR soldering, pin layout: Linear pinning, solder pin [P]: 2.1 mm, number of solder pins per potential: 1, plug-in system: COMBICON MSTB 2,5 advanced, Pin connector pattern alignment: Orthogonal, locking: without, mounting method: without, type of packaging: packed in cardboard, Product with pin output on left side

GMSTBO 2,5 HV/ 3-GR-7,25 THR - PCB header

2199566

<https://www.phoenixcontact.com/in/products/2199566>



PCB headers, nominal cross section: 2.5 mm², color: black, nominal current: 16 A, rated voltage (III/2): 630 V, contact surface: Sn, contact connection type: Pin, number of potentials: 3, number of rows: 1, number of positions: 3, number of connections: 3, product range: GMSTBO 2,5 HV, pitch: 7.25 mm, mounting: THR soldering, pin layout: Linear pinning, solder pin [P]: 2.1 mm, number of solder pins per potential: 1, plug-in system: COMBICON MSTB 2,5 advanced, Pin connector pattern alignment: Orthogonal, locking: without, mounting method: without, type of packaging: packed in cardboard, Product with pin output on right side

2201682

<https://www.phoenixcontact.com/in/products/2201682>

MSTBO 2,5/ 4-G1L THRR44 BK - PCB header

2697194

<https://www.phoenixcontact.com/in/products/2697194>



PCB headers, nominal cross section: 2.5 mm², color: black, nominal current: 16 A, rated voltage (III/2): 320 V, contact surface: Sn, contact connection type: Pin, number of rows: 1, number of positions: 4, product range: MSTBO 2,5/..-G1L-THR, pitch: 5 mm, mounting: THR soldering, pin layout: Linear pinning, solder pin [P]: 2.5 mm, number of solder pins per potential: 1, plug-in system: COMBICON MSTB 2,5, Pin connector pattern alignment: Orthogonal, locking: without, type of packaging: 44 mm wide tape, Product with pin output on left side

MSTBO 2,5/ 4-G1R THRR44 BK - PCB header

2697204

<https://www.phoenixcontact.com/in/products/2697204>



PCB headers, nominal cross section: 2.5 mm², color: black, nominal current: 16 A, rated voltage (III/2): 320 V, contact surface: Sn, contact connection type: Pin, number of rows: 1, number of positions: 4, product range: MSTBO 2,5/..-G1R-THR, pitch: 5 mm, mounting: THR soldering, pin layout: Linear pinning, solder pin [P]: 2.5 mm, number of solder pins per potential: 1, plug-in system: COMBICON MSTB 2,5, Pin connector pattern alignment: Orthogonal, locking: without, type of packaging: 44 mm wide tape, Product with pin output on right side

ME MAX 45 3-U1 KMGY - Electronics housing



2201682

<https://www.phoenixcontact.com/in/products/2201682>

MSTBO 2,5/ 4-G1L KMGY - PCB header

2907774

<https://www.phoenixcontact.com/in/products/2907774>



PCB headers, nominal cross section: 2.5 mm², color: light gray, nominal current: 12 A, rated voltage (III/2): 320 V, contact surface: Sn, contact connection type: Pin, number of potentials: 4, number of rows: 1, number of positions: 4, number of connections: 4, product range: MSTBO 2,5/...-G1L, pitch: 5 mm, mounting: Wave soldering, pin layout: Linear pinning, solder pin [P]: 3.5 mm, number of solder pins per potential: 1, plug-in system: COMBICON MSTB 2,5, Pin connector pattern alignment: Orthogonal, locking: without, type of packaging: packed in cardboard, Product with pin output on left side

MSTBO 2,5/ 4-G1R KMGY - PCB header

2907787

<https://www.phoenixcontact.com/in/products/2907787>



PCB headers, nominal cross section: 2.5 mm², color: light gray, nominal current: 12 A, rated voltage (III/2): 320 V, contact surface: Sn, contact connection type: Pin, number of rows: 1, number of positions: 4, product range: MSTBO 2,5/...-G1R, connection method: pluggable, mounting: Wave soldering, number of solder pins per potential: 1, plug-in system: COMBICON MSTB 2,5, Pin connector pattern alignment: Orthogonal, locking: without, Product with pin output on right side

2201682

<https://www.phoenixcontact.com/in/products/2201682>

MKDSO 1,5/ 5-L-3,5 KMGY - PCB terminal block

2278393

<https://www.phoenixcontact.com/in/products/2278393>



Printed circuit board terminal, nominal current: 8 A, rated voltage (III/2): 160 V, nominal cross section: 1.5 mm², number of potentials: 5, number of rows: 1, number of positions per row: 5, product range: MKDSO 1,5/..-L, pitch: 3.5 mm, connection method: Screw connection with tension sleeve, mounting: Wave soldering, conductor/PCB connection direction: 0 °, color: light gray, Pin layout: Linear pinning, Solder pin [P]: 2.3 mm, number of solder pins per potential: 1, type of packaging: packed in cardboard. Product with pin output on left side

MKDSO 1,5/ 5-R-3,5 KMGY - PCB terminal block

2278416

<https://www.phoenixcontact.com/in/products/2278416>



Printed circuit board terminal, nominal current: 8 A, rated voltage (III/2): 160 V, nominal cross section: 1.5 mm², number of potentials: 5, number of rows: 1, number of positions per row: 5, product range: MKDSO 1,5/..-R, pitch: 3.5 mm, connection method: Screw connection with tension sleeve, mounting: Wave soldering, conductor/PCB connection direction: 0 °, color: light gray, Pin layout: Linear pinning, Solder pin [P]: 2.3 mm, number of solder pins per potential: 1, type of packaging: packed in cardboard. Product with pin output on right side

2201682

<https://www.phoenixcontact.com/in/products/2201682>

MKDSO 2,5/ 4-L KMGY - PCB terminal block

2908485

<https://www.phoenixcontact.com/in/products/2908485>



Printed circuit board terminal, nominal current: 24 A, rated voltage (III/2): 400 V, nominal cross section: 2.5 mm², number of potentials: 4, number of rows: 1, number of positions per row: 4, product range: MKDSO 2,5/..-L, pitch: 5 mm, connection method: Screw connection with tension sleeve, mounting: Wave soldering, conductor/PCB connection direction: 0 °, color: light gray, Pin layout: Linear pinning, Solder pin [P]: 3.5 mm, number of solder pins per potential: 1, type of packaging: packed in cardboard. Product with pin output on left side

MKDSO 2,5/ 4-R KMGY - PCB terminal block

2908472

<https://www.phoenixcontact.com/in/products/2908472>



Printed circuit board terminal, nominal current: 24 A, rated voltage (III/2): 400 V, nominal cross section: 2.5 mm², number of potentials: 4, number of rows: 1, number of positions per row: 4, product range: MKDSO 2,5/..-R, pitch: 5 mm, connection method: Screw connection with tension sleeve, mounting: Wave soldering, conductor/PCB connection direction: 0 °, color: light gray, Pin layout: Linear pinning, Solder pin [P]: 3.5 mm, number of solder pins per potential: 1, type of packaging: packed in cardboard. Product with pin output on right side

2201682

<https://www.phoenixcontact.com/in/products/2201682>

MKDSO 2,5 HV/ 3L-7,5 KMGY - PCB terminal block

2890946

<https://www.phoenixcontact.com/in/products/2890946>

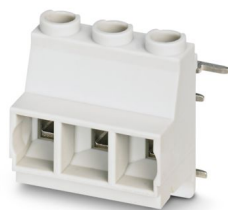


Printed circuit board terminal, nominal current: 24 A, rated voltage (III/2): 630 V, nominal cross section: 2.5 mm², number of rows: 1, number of positions per row: 3, product range: MKDSO 2,5 HV/...-L, pitch: 7.5 mm, connection method: Screw connection with tension sleeve, mounting: Wave soldering, conductor/PCB connection direction: 0 °, color: light gray, Pin layout: Linear pinning, Solder pin [P]: 3.5 mm, number of solder pins per potential: 1. Product with pin output on left side

MKDSO 2,5 HV/ 3R-7,5 KMGY - PCB terminal block

2890959

<https://www.phoenixcontact.com/in/products/2890959>



Printed circuit board terminal, nominal current: 24 A, rated voltage (III/2): 630 V, nominal cross section: 2.5 mm², number of rows: 1, number of positions per row: 3, product range: MKDSO 2,5 HV/...-R, pitch: 7.5 mm, connection method: Screw connection with tension sleeve, mounting: Wave soldering, conductor/PCB connection direction: 0 °, color: light gray, Pin layout: Linear pinning, Solder pin [P]: 3.5 mm, number of solder pins per potential: 1. Product with pin output on right side

2201682

<https://www.phoenixcontact.com/in/products/2201682>

FKDSO 2,5/ 4-L KMGY - PCB terminal block

2200319

<https://www.phoenixcontact.com/in/products/2200319>



Printed circuit board terminal, nominal current: 22 A, rated voltage (III/2): 250 V, nominal cross section: 2.5 mm², number of potentials: 4, number of rows: 1, number of positions per row: 4, product range: FKDSO 2,5/...-L, pitch: 5 mm, connection method: Push-in spring connection, mounting: Wave soldering, conductor/PCB connection direction: 0 °, color: light gray, Pin layout: Linear pinning, Solder pin [P]: 3.5 mm, number of solder pins per potential: 1, type of packaging: packed in cardboard. Product with pin output on left side

FKDSO 2,5/ 4-R KMGY - PCB terminal block

2200320

<https://www.phoenixcontact.com/in/products/2200320>



Printed circuit board terminal, nominal current: 22 A, rated voltage (III/2): 250 V, nominal cross section: 2.5 mm², number of potentials: 4, number of rows: 1, number of positions per row: 4, product range: FKDSO 2,5/...-R, pitch: 5 mm, connection method: Push-in spring connection, mounting: Wave soldering, conductor/PCB connection direction: 0 °, color: light gray, Pin layout: Linear pinning, Solder pin [P]: 3.5 mm, number of solder pins per potential: 1, type of packaging: packed in cardboard. Product with pin output on right side

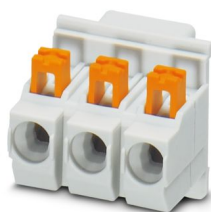
2201682

<https://www.phoenixcontact.com/in/products/2201682>

FKDSO 2,5 HV/3-L 7,5 GY7035 - PCB terminal block

2201128

<https://www.phoenixcontact.com/in/products/2201128>



Printed circuit board terminal, nominal current: 24 A, rated voltage (III/2): 630 V, nominal cross section: 2.5 mm², number of potentials: 3, number of rows: 1, number of positions per row: 3, product range: FKDSO 2,5 HV/...-L, pitch: 7.5 mm, connection method: Push-in spring connection, mounting: Wave soldering, conductor/PCB connection direction: 0 °, color: light gray, Pin layout: Linear pinning, Solder pin [P]: 3.53 mm, number of solder pins per potential: 1, type of packaging: packed in cardboard. Product with pin output on left side

FKDSO 2,5 HV/3-R 7,5 GY7035 - PCB terminal block

2201129

<https://www.phoenixcontact.com/in/products/2201129>



Printed circuit board terminal, nominal current: 24 A, rated voltage (III/2): 630 V, nominal cross section: 2.5 mm², number of potentials: 3, number of rows: 1, number of positions per row: 3, product range: FKDSO 2,5 HV/...-R, pitch: 7.5 mm, connection method: Push-in spring connection, mounting: Wave soldering, conductor/PCB connection direction: 0 °, color: light gray, Pin layout: Linear pinning, Solder pin [P]: 3.53 mm, number of solder pins per potential: 1, type of packaging: packed in cardboard. Product with pin output on right side

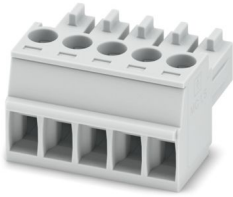
2201682

<https://www.phoenixcontact.com/in/products/2201682>

MC 1,5/ 5-ST-3,5 GY7035 - PCB connector

1769087

<https://www.phoenixcontact.com/in/products/1769087>

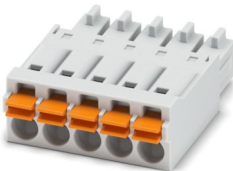


PCB connector, nominal cross section: 1.5 mm², color: light gray, nominal current: 8 A, rated voltage (III/2): 160 V, contact surface: Sn, contact connection type: Socket, number of potentials: 5, number of rows: 1, number of positions: 5, number of connections: 5, product range: MC 1,5/...-ST, pitch: 3.5 mm, connection method: Screw connection with tension sleeve, screw head form: L Slotted, conductor/PCB connection direction: 0 °, plug-in system: COMBICON MC 1,5, locking: without, mounting method: without, type of packaging: packed in cardboard

FMC 1,5/ 5-ST-3,5 GY7035 - PCB connector

1773581

<https://www.phoenixcontact.com/in/products/1773581>



PCB connector, nominal cross section: 1.5 mm², color: light gray, nominal current: 8 A, rated voltage (III/2): 160 V, contact surface: Sn, contact connection type: Socket, number of potentials: 5, number of rows: 1, number of positions: 5, number of connections: 5, product range: FMC 1,5/...-ST, pitch: 3.5 mm, connection method: Push-in spring connection, conductor/PCB connection direction: 0 °, plug-in system: COMBICON FMC 1,5 - MCDN 1,5, locking: without, mounting method: without, type of packaging: packed in cardboard

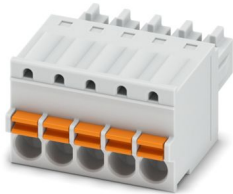
2201682

<https://www.phoenixcontact.com/in/products/2201682>

FK-MCP 1,5/ 5-ST-3,5 GY7035 - PCB connector

1773604

<https://www.phoenixcontact.com/in/products/1773604>

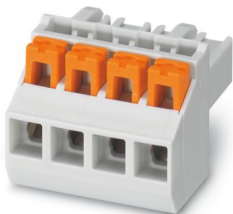


PCB connector, nominal cross section: 1.5 mm², color: light gray, nominal current: 8 A, rated voltage (III/2): 160 V, contact surface: Sn, contact connection type: Socket, number of potentials: 5, number of rows: 1, number of positions: 5, number of connections: 5, product range: FK-MCP 1,5/...-ST, pitch: 3.5 mm, connection method: Push-in spring connection, conductor/PCB connection direction: 0 °, plug-in system: COMBICON MC 1,5, locking: without, mounting method: without, type of packaging: packed in cardboard

PSPT 2,5/ 4-ST KMGY - PCB connector

2202344

<https://www.phoenixcontact.com/in/products/2202344>



PCB connector, nominal cross section: 2.5 mm², color: light gray, nominal current: 16 A, rated voltage (III/2): 300 V, contact surface: Sn, contact connection type: Socket, number of potentials: 4, number of rows: 1, number of positions: 4, number of connections: 4, product range: PSPT 2,5/...-ST, pitch: 5 mm, connection method: Push-in spring connection, conductor/PCB connection direction: 0 °, locking clip: - Locking clip, locking: without, mounting method: without, type of packaging: packed in cardboard, Color of the spring lever: orange

2201682

<https://www.phoenixcontact.com/in/products/2201682>

MSTBT 2,5 HC/ 4-STP GY7035 - PCB connector

2200332

<https://www.phoenixcontact.com/in/products/2200332>



PCB connector, nominal cross section: 2.5 mm², color: light gray, nominal current: 16 A (see derating curve), rated voltage (III/2): 320 V, contact surface: Sn, contact connection type: Socket, number of potentials: 4, number of rows: 1, number of positions: 4, number of connections: 4, product range: MSTBT 2,5 HC/...-STP, pitch: 5 mm, connection method: Screw connection with tension sleeve, conductor/PCB connection direction: 0 °, locking clip: - Locking clip, plug-in system: COMBICON MSTB 2,5 HC, locking: without, mounting method: without, type of packaging: packed in cardboard

GMSTBT 2,5 HV/3-ST-7,25 GY7035 - PCB connector

2199553

<https://www.phoenixcontact.com/in/products/2199553>



PCB connector, nominal cross section: 2.5 mm², color: gray, nominal current: 16 A, rated voltage (III/2): 1000 V, contact surface: Sn, contact connection type: Socket, number of potentials: 3, number of rows: 1, number of positions: 3, number of connections: 3, product range: GMSTBT 2,5 HV/...-ST, pitch: 7.25 mm, connection method: Screw connection with tension sleeve, conductor/PCB connection direction: 0 °, locking clip: - Locking clip, plug-in system: COMBICON MSTB 2,5 advanced, locking: without, mounting method: without, type of packaging: packed in cardboard

2201682

<https://www.phoenixcontact.com/in/products/2201682>

MSTBO 2,5/ 4-G1L KMGY AU - PCB header

1077607

<https://www.phoenixcontact.com/in/products/1077607>



PCB headers, color: light gray, contact surface: Au, contact connection type: Pin, number of rows: 1, number of positions: 4, product range: MSTBO 2,5/...-G1L Au, pitch: 5 mm, mounting: Wave soldering, pin layout: Linear pinning, solder pin [P]: 3.5 mm, number of solder pins per potential: 1, plug-in system: COMBICON MSTB 2,5, Pin connector pattern alignment: Orthogonal, locking: without, type of packaging: packed in cardboard, Product with pin output on left side

MSTBO 2,5/ 4-G1R KMGY AU - PCB header

1077608

<https://www.phoenixcontact.com/in/products/1077608>



PCB headers, color: light gray, contact surface: Au, contact connection type: Pin, number of rows: 1, number of positions: 4, product range: MSTBO 2,5/...-G1R Au, pitch: 5 mm, mounting: Wave soldering, pin layout: Linear pinning, solder pin [P]: 3.5 mm, number of solder pins per potential: 1, plug-in system: COMBICON MSTB 2,5, Pin connector pattern alignment: Orthogonal, locking: without, type of packaging: packed in cardboard, Product with pin output on right side

2201682

<https://www.phoenixcontact.com/in/products/2201682>

MSTBO 2,5/ 4-G1L THRR44 BK AU - PCB header

1077613

<https://www.phoenixcontact.com/in/products/1077613>

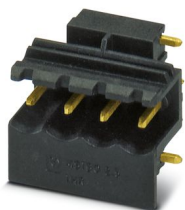


PCB headers, color: black, contact surface: Au, contact connection type: Pin, number of rows: 1, number of positions: 4, product range: MSTBO 2,5/..-G1L THR Au, pitch: 5 mm, mounting: THR soldering, pin layout: Linear pinning, solder pin [P]: 2.5 mm, number of solder pins per potential: 1, plug-in system: COMBICON MSTB 2,5, Pin connector pattern alignment: Orthogonal, locking: without, type of packaging: 44 mm wide tape, Product with pin output on left side

MSTBO 2,5/ 4-G1R THRR44 BK AU - PCB header

1077614

<https://www.phoenixcontact.com/in/products/1077614>



PCB headers, color: black, contact surface: Au, contact connection type: Pin, number of rows: 1, number of positions: 4, product range: MSTBO 2,5/..-G1R THR Au, pitch: 5 mm, mounting: THR soldering, pin layout: Linear pinning, solder pin [P]: 2.5 mm, number of solder pins per potential: 1, plug-in system: COMBICON MSTB 2,5, Pin connector pattern alignment: Orthogonal, locking: without, type of packaging: 44 mm wide tape, Product with pin output on right side

Accessories

ME MAX 45 3-U1 KMGY - Electronics housing



2201682

<https://www.phoenixcontact.com/in/products/2201682>

ME FE-CONTACT - Functional ground contact

2908294

<https://www.phoenixcontact.com/in/products/2908294>



DIN rail housing, FE contact with soldering lug, width: 5 mm, height: 15.25 mm, depth: 9.5 mm

ME MAX B-22,5 KMGY - Filler plug

2707929

<https://www.phoenixcontact.com/in/products/2707929>



DIN rail housing, Filler plug for unoccupied terminal points, width: 20 mm, height: 21.6 mm, depth: 8.1 mm, color: light gray (similar RAL 7035)

ME MAX 45 3-U1 KMGY - Electronics housing



2201682

<https://www.phoenixcontact.com/in/products/2201682>

HS LC-H-D3/ R1XC1 - Fiber optic

2202313

<https://www.phoenixcontact.com/in/products/2202313>



Multiple light guides, passive, rigid, Cylinder head, emission surface: planar, number of displays: 1, (1 row, 1 column), pitch: 5.08 mm, ESD protection: <10 kV, can be used for the ME, ME-MAX, ME-IO, ME PLC, and EH housing ranges (housing must be processed)

HS LC-H-5X2/ R1XC1 - Fiber optic

2202314

<https://www.phoenixcontact.com/in/products/2202314>



Single light guide, passive, rigid, Rectangular, straight, emission surface: planar, number of displays: 1, (1 row, 1 column), ESD protection: <10 kV, can be used for the ME, ME-MAX, ME-IO, ME PLC, and EH housing ranges (housing must be processed)

ME MAX 45 3-U1 KMGY - Electronics housing



2201682

<https://www.phoenixcontact.com/in/products/2201682>

HS LC-H-D3/ R2XC1-5,08 - Fiber optic

2202315

<https://www.phoenixcontact.com/in/products/2202315>



Multiple light guides, passive, rigid, Cylinder head, emission surface: planar, number of displays: 2, (2 rows, 1 column), pitch: 5.08 mm, ESD protection: <5 kV, can be used for the ME, ME-MAX, ME-IO, ME PLC, and EH housing ranges (housing must be processed)

HS LC-H-D2/ R2XC1-2,54 - Fiber optic

2202316

<https://www.phoenixcontact.com/in/products/2202316>



Multiple light guides with glare protection, passive, rigid, Raised head, emission surface: spherical, number of displays: 2, (2 rows, 1 column), pitch: 2.54 mm, ESD protection: <8 kV, can be used for the ME, ME-MAX, ME-IO, ME PLC, and EH housing ranges (housing must be processed)

ME MAX 45 3-U1 KMGY - Electronics housing



2201682

<https://www.phoenixcontact.com/in/products/2201682>

HS LC-H-D2/ R2XC2-2,54 - Fiber optic

2202317

<https://www.phoenixcontact.com/in/products/2202317>



Multiple light guides with glare protection, passive, rigid, Raised head, emission surface: spherical, number of displays: 4, (2 rows, 2 columns), pitch: 2.54 mm, ESD protection: <8 kV, can be used for the ME, ME-MAX, ME-IO, ME PLC, and EH housing ranges (housing must be processed)

HS LC-H-D2/ R2XC5-2,54 - Fiber optic

2202318

<https://www.phoenixcontact.com/in/products/2202318>



Multiple light guides with glare protection, passive, rigid, Raised head, emission surface: spherical, number of displays: 10, (2 rows, 5 columns), pitch: 2.54 mm, ESD protection: <8 kV, can be used for the ME, ME-MAX, ME-IO, ME PLC, and EH housing ranges (housing must be processed)

ME MAX 45 3-U1 KMGY - Electronics housing



2201682

<https://www.phoenixcontact.com/in/products/2201682>

HS LC-H-D2/ R2XC10-2,54 - Fiber optic

2202319

<https://www.phoenixcontact.com/in/products/2202319>



Multiple light guides with glare protection, passive, rigid, Raised head, emission surface: spherical, number of displays: 20, (2 rows, 10 columns), pitch: 2.54 mm, ESD protection: <8 kV, can be used for the ME, ME-MAX, ME-IO, ME PLC, and EH housing ranges (housing must be processed)

HS LC-H-D2/ R4XC2-2,54 - Fiber optic

2202320

<https://www.phoenixcontact.com/in/products/2202320>



Multiple light guides with glare protection, passive, rigid, Raised head, emission surface: spherical, number of displays: 8, (4 rows, 2 columns), pitch: 2.54 mm, ESD protection: <8 kV, can be used for the ME, ME-MAX, ME-IO, ME PLC, and EH housing ranges (housing must be processed)

ME MAX 45 3-U1 KMGY - Electronics housing



2201682

<https://www.phoenixcontact.com/in/products/2201682>

HS LC-H-D2/ R4XC5-2,54 - Fiber optic

2202321

<https://www.phoenixcontact.com/in/products/2202321>

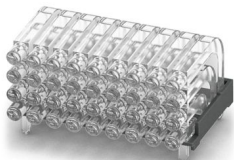


Multiple light guides with glare protection, passive, rigid, Raised head, emission surface: spherical, number of displays: 20, (4 rows, 5 columns), pitch: 2.54 mm, ESD protection: <8 kV, can be used for the ME, ME-MAX, ME-IO, ME PLC, and EH housing ranges (housing must be processed)

HS LC-H-D2/ R4XC9-2,54 - Fiber optic

2202322

<https://www.phoenixcontact.com/in/products/2202322>



Multiple light guides with glare protection, passive, rigid, Raised head, emission surface: spherical, number of displays: 36, (4 rows, 9 columns), pitch: 2.54 mm, ESD protection: <8 kV, can be used for the ME, ME-MAX, ME-IO, ME PLC, and EH housing ranges (housing must be processed)

ME MAX 45 3-U1 KMGY - Electronics housing



2201682

<https://www.phoenixcontact.com/in/products/2201682>

HS LC-H-D2/ R4XC10-2,54 - Fiber optic

2202323

<https://www.phoenixcontact.com/in/products/2202323>



Multiple light guides with glare protection, passive, rigid, Raised head, emission surface: spherical, number of displays: 40, (4 rows, 10 columns), pitch: 2.54 mm, ESD protection: <8 kV, can be used for the ME, ME-MAX, ME-IO, ME PLC, and EH housing ranges (housing must be processed)

ME BUS FE CONTACT - Functional ground contact

2278076

<https://www.phoenixcontact.com/in/products/2278076>



DIN rail housing, FE contact, width: 5 mm, height: 15.25 mm, depth: 9.5 mm

ME MAX 45 3-U1 KMGY - Electronics housing



2201682

<https://www.phoenixcontact.com/in/products/2201682>

HS LC-H-D2C/ R2XC1-2,54 - Fiber optic

1036658

<https://www.phoenixcontact.com/in/products/1036658>



Multiple light guides with glare protection, passive, rigid, Raised head, conical, emission surface: spherical, number of displays: 2, (2 rows, 1 column), pitch: 2.54 mm, ESD protection: <8 kV, can be used for the ME, ME-MAX, ME-IO, ME PLC, and EH housing ranges (housing must be processed)

HS LC-H-D2C/ R2XC2-2,54 - Fiber optic

1043044

<https://www.phoenixcontact.com/in/products/1043044>



Multiple light guides with glare protection, passive, rigid, Raised head, conical, emission surface: spherical, number of displays: 4, (2 rows, 2 columns), pitch: 2.54 mm, ESD protection: <8 kV, can be used for the ME, ME-MAX, ME-IO, ME PLC, and EH housing ranges (housing must be processed)

ME MAX 45 3-U1 KMGY - Electronics housing



2201682

<https://www.phoenixcontact.com/in/products/2201682>

HS LC-H-D2C/ R2XC5-2,54 - Fiber optic

1071310

<https://www.phoenixcontact.com/in/products/1071310>



Multiple light guides with glare protection, passive, rigid, Raised head, conical, emission surface: spherical, number of displays: 10, (2 rows, 5 columns), pitch: 2.54 mm, ESD protection: <8 kV, can be used for the ME, ME-MAX, ME-IO, ME PLC, and EH housing ranges (housing must be processed)

HS LC-H-D2C/ R2XC10-2,54 - Fiber optic

1071314

<https://www.phoenixcontact.com/in/products/1071314>



Multiple light guides with glare protection, passive, rigid, Raised head, conical, emission surface: spherical, number of displays: 20, (2 rows, 10 columns), pitch: 2.54 mm, ESD protection: <8 kV, can be used for the ME, ME-MAX, ME-IO, ME PLC, and EH housing ranges (housing must be processed)

ME MAX 45 3-U1 KMGY - Electronics housing



2201682

<https://www.phoenixcontact.com/in/products/2201682>

HS LC-H-D2C/ R4XC2-2,54 - Fiber optic

1071316

<https://www.phoenixcontact.com/in/products/1071316>



Multiple light guides with glare protection, passive, rigid, Raised head, conical, emission surface: spherical, number of displays: 8, (4 rows, 2 columns), pitch: 2.54 mm, ESD protection: <8 kV, can be used for the ME, ME-MAX, ME-IO, ME PLC, and EH housing ranges (housing must be processed)

HS LC-H-D2C/ R4XC5-2,54 - Fiber optic

1071318

<https://www.phoenixcontact.com/in/products/1071318>



Multiple light guides with glare protection, passive, rigid, Raised head, conical, emission surface: spherical, number of displays: 20, (4 rows, 5 columns), pitch: 2.54 mm, ESD protection: <8 kV, can be used for the ME, ME-MAX, ME-IO, ME PLC, and EH housing ranges (housing must be processed)

ME MAX 45 3-U1 KMGY - Electronics housing



2201682

<https://www.phoenixcontact.com/in/products/2201682>

HS LC-H-D2C/ R4XC9-2,54 - Fiber optic

1071321

<https://www.phoenixcontact.com/in/products/1071321>



Multiple light guides with glare protection, passive, rigid, Raised head, conical, emission surface: spherical, number of displays: 36, (4 rows, 9 columns), pitch: 2.54 mm, ESD protection: <8 kV, can be used for the ME, ME-MAX, ME-IO, ME PLC, and EH housing ranges (housing must be processed)

HS LC-H-D2C/ R4XC10-2,54 - Fiber optic

1071329

<https://www.phoenixcontact.com/in/products/1071329>



Multiple light guides with glare protection, passive, rigid, Raised head, conical, emission surface: spherical, number of displays: 40, (4 rows, 10 columns), pitch: 2.54 mm, ESD protection: <8 kV, can be used for the ME, ME-MAX, ME-IO, ME PLC, and EH housing ranges (housing must be processed)

ME MAX 45 3-U1 KMGY - Electronics housing

2201682

<https://www.phoenixcontact.com/in/products/2201682>



ME MF 17,5 - Base latch

2908281

<https://www.phoenixcontact.com/in/products/2908281>

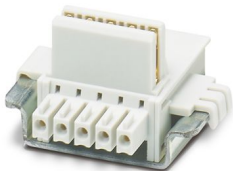
Metal foot catch with spring, for intermediate elements.



ME 22,5 TBUS 1,5/4P1S KMGY - DIN rail bus connectors

2201732

<https://www.phoenixcontact.com/in/products/2201732>



DIN rail connector, color: light gray, nominal current: 8 A, 8 A (parallel contacts) (Serial contacts), rated voltage (III/2): 50 V, number of positions: 5, product range: TBUS5-22,5.., pitch: 3.81 mm, mounting: DIN rail mounting, locking: without, mounting method: without, Item with gold-plated contacts, bus connectors for connecting with electronics housings, 4 parallel contacts/1 serial contact

ME MAX 45 3-U1 KMGY - Electronics housing



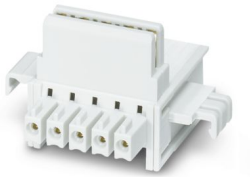
2201682

<https://www.phoenixcontact.com/in/products/2201682>

ME 22,5 TBUS 1,5/ 5-ST-3,81 KMGY - DIN rail bus connectors

2713722

<https://www.phoenixcontact.com/in/products/2713722>

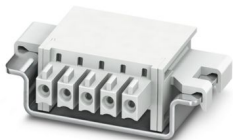


DIN rail connector, color: light gray, nominal current: 8 A (parallel contacts), rated voltage (III/2): 125 V, number of positions: 5, product range: TBUS5-22,5..., pitch: 3.81 mm, mounting: DIN rail mounting, locking: without, mounting method: without, type of packaging: packed in cardboard, Item with gold-plated contacts, bus connectors for connecting with electronics housings, 5 parallel contacts

ME 22,5 TBUS ADAPTER KMGY - DIN rail bus connectors

2201756

<https://www.phoenixcontact.com/in/products/2201756>



DIN rail bus adapter for ME and ME-MAX, design width: 22.5 mm, 5 parallel positions, color: light gray (similar to RAL 7035)

ME MAX 45 3-U1 KMGY - Electronics housing



2201682

<https://www.phoenixcontact.com/in/products/2201682>

PCO 22,5-L KMGY - Power connector

2201685

<https://www.phoenixcontact.com/in/products/2201685>



Power connector for ME-MAX housing, design width: 22.5 mm, 2-pos., used to transmit a total current of up to 42 A at 60 V DC.

ME MAX TBUS BS KMGY - Filler plug

2199650

<https://www.phoenixcontact.com/in/products/2199650>



DIN rail housing, Filler plugs for TBUS recess, width: 5.8 mm, height: 30 mm, depth: 6.6 mm, color: light gray (similar RAL 7035)

ME MAX 45 3-U1 KMGY - Electronics housing

2201682

<https://www.phoenixcontact.com/in/products/2201682>



E/ME TBUS NS35 GY - End bracket

2713780

<https://www.phoenixcontact.com/in/products/2713780>

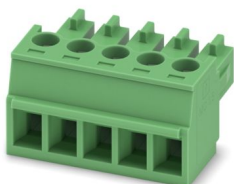


End clamp, stable construction for DIN rail bus connector

MC 1,5/ 5-ST-3,81 AU - PCB connector

1860883

<https://www.phoenixcontact.com/in/products/1860883>



PCB connector, nominal cross section: 1.5 mm², color: green, nominal current: 8 A, rated voltage (III/2): 160 V, contact surface: Au, contact connection type: Socket, number of potentials: 5, number of rows: 1, number of positions: 5, number of connections: 5, product range: MC 1,5/-ST, pitch: 3.81 mm, connection method: Screw connection with tension sleeve, screw head form: L Slotted, conductor/PCB connection direction: 0 °, pin layout: Linear three-way pinning, plug-in system: COMBICON MC 1,5, locking: without, mounting method: without, type of packaging: packed in cardboard

ME MAX 45 3-U1 KMGY - Electronics housing



2201682

<https://www.phoenixcontact.com/in/products/2201682>

IMC 1,5/ 5-ST-3,81 - PCB connector

1857919

<https://www.phoenixcontact.com/in/products/1857919>

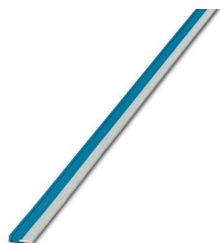


PCB connector, nominal cross section: 1.5 mm², color: green, nominal current: 8 A, rated voltage (III/2): 160 V, contact surface: Sn, contact connection type: Pin, number of potentials: 5, number of rows: 1, number of positions: 5, number of connections: 5, product range: IMC 1,5/...-ST, pitch: 3.81 mm, connection method: Screw connection with tension sleeve, screw head form: L Slotted, conductor/PCB connection direction: 0 °, plug-in system: COMBICON MC 1,5, locking: without, mounting method: without, type of packaging: packed in cardboard

PBR 42A BU - Cross connection

2201916

<https://www.phoenixcontact.com/in/products/2201916>



Jumper for PCO power connector in ME-MAX housing, color: blue (similar to RAL 5015)

ME MAX 45 3-U1 KMGY - Electronics housing



2201682

<https://www.phoenixcontact.com/in/products/2201682>

PBR 42A GY - Cross connection

2201917

<https://www.phoenixcontact.com/in/products/2201917>



Jumper for PCO power connector in ME-MAX housing, color: gray (similar to RAL 7042)

PBR 42A RD - Cross connection

2201915

<https://www.phoenixcontact.com/in/products/2201915>



Jumper for PCO power connector in ME-MAX housing, color: red (similar to RAL 3000)

ME MAX 45 3-U1 KMGY - Electronics housing



2201682

<https://www.phoenixcontact.com/in/products/2201682>

ME-SAS - Shield connection clamp

2853899

<https://www.phoenixcontact.com/in/products/2853899>

Shield connection clamp for terminal points starting from 2.5 mm²



CR MSTBO-G1 - Coding section

2199618

<https://www.phoenixcontact.com/in/products/2199618>

Coding section, inserted into the recess in the header or the inverted plug, red insulating material



Phoenix Contact 2025 © - all rights reserved
<https://www.phoenixcontact.com>

PHOENIX CONTACT (I) Pvt. Ltd.
A-58/2, Okhla Industrial Area, Phase - II, New Delhi-110 020

+91.1275.71420
info@phoenixcontact.co.in