

# Analog Rotation Sensor V2 (SKU: DFR0058)

## Contents

- 1 Introduction
- 2 Specification
- 3 Pin Definition
- 4 Tutorial
  - 4.1 Requirements
  - 4.2 Connection Diagram
  - 4.3 Sample Code
- 5 Dimension Diagram
- 6 More



(/wiki/index.php/File:DFR0058.jpg)

Analog Rotation Sensor V2 (SKU: DFR0058)

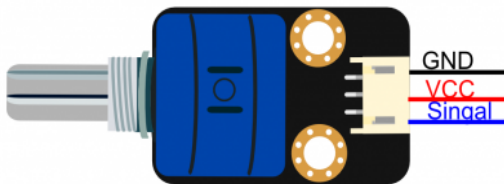
## Introduction

This V2 *Rotation Sensor* is arduino compatible multi-ring rotation analog sensor. It is based on multi-turn precision potentiometer. It can rotate upto 10 laps. If the sensor input 5V voltage power, then the 5000mV will be divided into 3600 portions(10 laps), when you adjust the rotation of the 3 degrees and then the voltage will have 2mV change, so you can accurately achieve the effect of voltage with small changes. and it is easy to be connected to Arduino or DFRduino with our sensor expansion board.

## Specification

- Arduino compatible
- Operating Voltage: +3.3-5V DC
- Signal Type: analog signal
- Size: 50x22mm
- Tnterface Mode: Gravity interface (PH2.0-3)
- Rotation Angle: 3600 degrees
- Weight: 20g

## Pin Definition



(/wiki/index.php/File:DRF0058\_pin.png)

Color	Description
BLACK	GND
RED	VCC
BLUE	Analog Signal Output

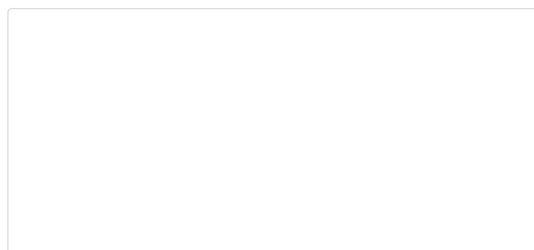
## Tutorial

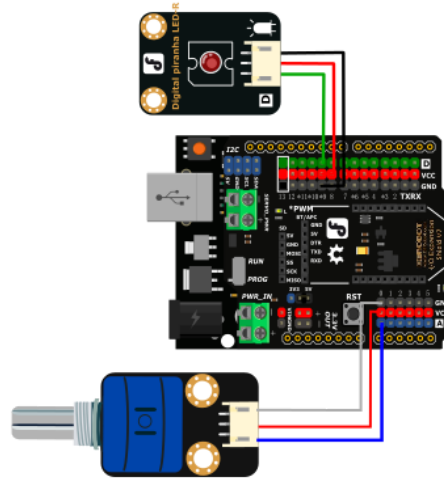
In this tutorial we rotate the Analog Rotation Sensor V2 to output the analog voltage value in the serial port.

### Requirements

- **Hardware**
  - UNO x1
  - Analog Rotation Sensor V2 x1
- **Software**
  - Arduino IDE V1.6.5 [Click to Download Arduino IDE from Arduino® \(https://www.arduino.cc/en/Main/Software\)](https://www.arduino.cc/en/Main/Software)

### Connection Diagram





(/wiki/index.php/File:DFR0058\_Connection.png)

Analog Rotation Sensor V2 connection diagram

## Sample Code

```

const int analogInPin = A0; // Analog input pin that the potentiometer is attached to
const int analogOutPin = 9; // Analog output pin that the LED is attached to

int sensorValue = 0; // value read from the pot
int outputValue = 0; // value output to the PWM (analog out)

void setup() {
  // initialize serial communications at 9600 bps:
  Serial.begin(9600);
}

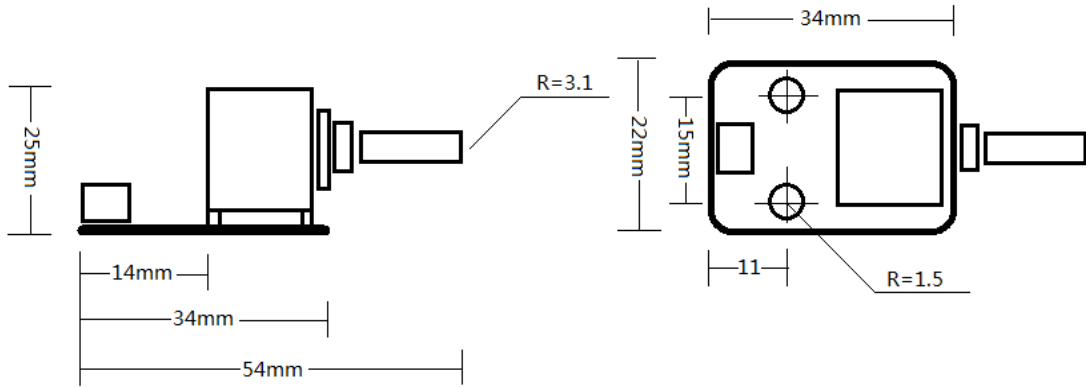
void loop() {
  // read the analog in value:
  sensorValue = analogRead(analogInPin);
  // map it to the range of the analog out:
  outputValue = map(sensorValue, 0, 1023, 0, 255);
  // change the analog out value:
  analogWrite(analogOutPin, outputValue);

  // print the results to the serial monitor:
  Serial.print("sensor = ");
  Serial.print(sensorValue);
  Serial.print("\t output = ");
  Serial.println(outputValue);

  // wait 2 milliseconds before the next loop
  // for the analog-to-digital converter to settle
  // after the last reading:
  delay(20);
}


```

## Dimension Diagram



(/wiki/index.php/File:DFR0058\_Dimension.png)

## More

 (<http://www.dfrobot.com/>) Get it from **DFRobot Store** ([http://www.dfrobot.com/index.php?route=product/product&product\\_id=86&search=DFR0058&description=true#.VsK77vmF6Uk](http://www.dfrobot.com/index.php?route=product/product&product_id=86&search=DFR0058&description=true#.VsK77vmF6Uk)) or Analog Rotation Sensor V2 (SKU: DFR0058) ([http://www.dfrobot.com/index.php?route=product/product&keyword=dfr0058&category\\_id=0&description=1&model=1&product\\_id=86](http://www.dfrobot.com/index.php?route=product/product&keyword=dfr0058&category_id=0&description=1&model=1&product_id=86))

Categories (</wiki/index.php/Special:Categories>): [Product Manual \(/wiki/index.php/Category:Product\\_Manual\)](/wiki/index.php/Category:Product_Manual)  
| [DFR Series \(/wiki/index.php/Category:DFR\\_Series\)](/wiki/index.php/Category:DFR_Series) | [Sensors \(/wiki/index.php/Category:Sensors\)](/wiki/index.php/Category:Sensors)

This page was last modified on 16 February 2016, at 06:04.  
Content is available under GNU Free Documentation License 1.3 or later (<https://www.gnu.org/copyleft/fdl.html>) unless otherwise noted.



(<https://www.gnu.org/copyleft/fdl.html>)



(//www.mediawiki.org/)