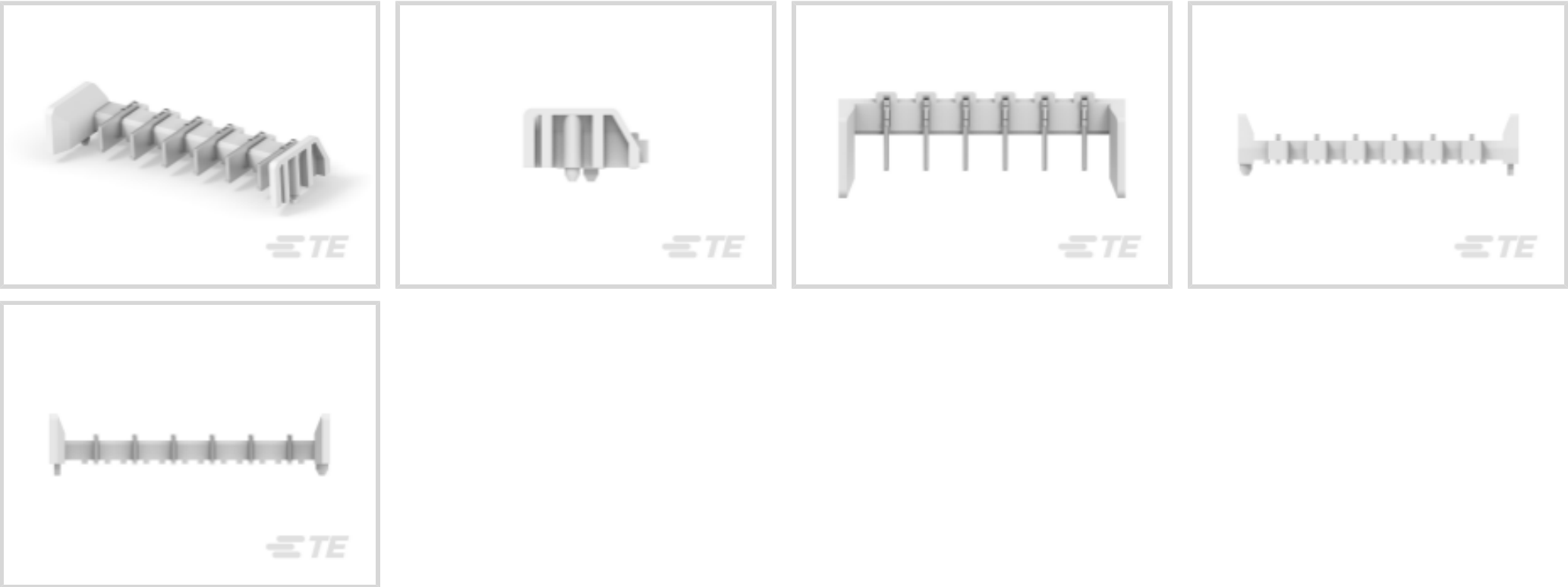




Connectors > PCB Connectors > PCB Headers & Receptacles



PCB Connector Type: **PCB Mount Header**

PCB Mount Orientation: **Vertical**

Connector System: **Board-to-Component**

Number of Positions: **6**

Centerline (Pitch): **5 mm [.19 in]**

Features

Product Type Features

PCB Connector Type	PCB Mount Header
Connector System	Board-to-Component
Header Type	Unshrouded
Sealable	No
Connector & Contact Terminates To	Printed Circuit Board
Connector Product Type	Connector Assembly

Configuration Features

PCB Mount Orientation	Vertical
Number of Positions	6

Electrical Characteristics

Voltage Rating (Max)	250 VAC
----------------------	---------

Body Features

Primary Product Color	Natural
-----------------------	---------



Contact Features

Contact Layout	Inline
Contact Base Material	Copper Alloy
PCB Contact Termination Area Plating Material	Tin
Contact Mating Area Plating Material	Tin (Sn)
Contact Type	Tab
Contact Current Rating (Max)	5 A

Termination Features

Termination Method to PCB	Surface Mount
---------------------------	---------------

Mechanical Attachment

PCB Mount Retention	Without
PCB Mount Alignment	With
Connector Mounting Type	Board Mount
Mating Alignment	With

Housing Features

Housing Material	LCP - GF (Liquid Crystal Polymer)
Centerline (Pitch)	5 mm [.19 in]

Usage Conditions

Operating Temperature Range	-40 – 85 °C [-40 – 185 °F]
-----------------------------	----------------------------

Operation/Application

Circuit Application	Power
---------------------	-------

Industry Standards

UL Flammability Rating	UL 94V-0
------------------------	----------

Packaging Features

Packaging Quantity	350
Packaging Method	Reel

Product Compliance

For compliance documentation, visit the product page on TE.com>

EU RoHS Directive 2011/65/EU	Compliant
EU ELV Directive 2000/53/EC	Compliant
China RoHS 2 Directive MIIT Order No 32, 2016	No Restricted Materials Above Threshold



EU REACH Regulation (EC) No. 1907/2006

Current ECHA Candidate List: JAN 2025 (247)
Candidate List Declared Against: JUNE 2024 (241)
Does not contain REACH SVHC

Halogen Content

Low Halogen - Br, Cl, F, I < 900 ppm per homogenous material. Also BFR/CFR/PVC Free


Solder Process Capability

Not reviewed for solder process capability


Product Compliance Disclaimer

This information is provided based on reasonable inquiry of our suppliers and represents our current actual knowledge based on the information they provided. This information is subject to change. The part numbers that TE has identified as EU RoHS compliant have a maximum concentration of 0.1% by weight in homogenous materials for lead, hexavalent chromium, mercury, PBB, PBDE, DBP, BBP, DEHP, DIBP, and 0.01% for cadmium, or qualify for an exemption to these limits as defined in the Annexes of Directive 2011/65/EU (RoHS2). Finished electrical and electronic equipment products will be CE marked as required by Directive 2011/65/EU. Components may not be CE marked. Additionally, the part numbers that TE has identified as EU ELV compliant have a maximum concentration of 0.1% by weight in homogenous materials for lead, hexavalent chromium, and mercury, and 0.01% for cadmium, or qualify for an exemption to these limits as defined in the Annexes of Directive 2000/53/EC (ELV). Regarding the REACH Regulation, the information TE provides on SVHC in articles for this part number is based on the latest European Chemicals Agency (ECHA) ‘Guidance on requirements for substances in articles’ posted at this URL: <https://echa.europa.eu/guidance-documents/guidance-on-reach>


Compatible Parts




TE Part # 2834334-2
4.0PITCH ITB CONN_2P_W
CAP_NATURAL




TE Part # 2834385-2
RELEASE POKE-IN
CONNECTOR_2P_NATURAL



TE Part # 2319461-6
TWO-PIECE POKE-IN, 5MM CONN, 6
POS

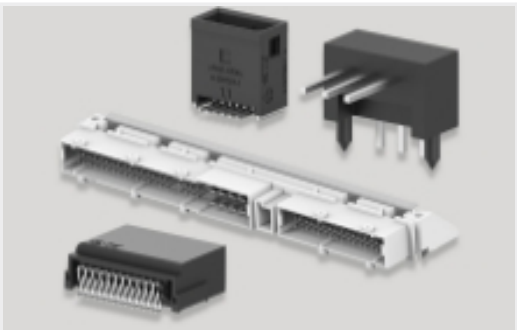


TE Part # 2834006-1
RELEASE POKE-IN
CONNECTOR_1POLES

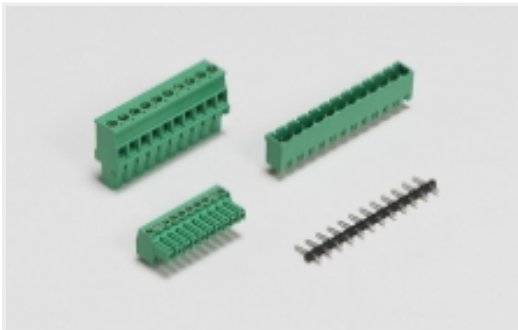


TE Part # 2834167-3
RELEASABLE SLIM CONTACT

Also in the Series | **BUCHANAN WireMate Two-Piece Poke-In Series**



PCB Headers & Receptacles(14)



PCB Terminal Blocks(28)



Rectangular Power Connectors(14)

Customers Also Bought



TE Part #1-644038-0
10P MTA100 CONN ASSY POL 15AU



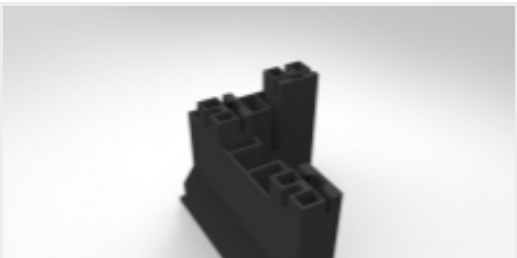
TE Part #2367196-3
1.0mm WTB RIGHT ANGLE TYPE WITH LATCH



TE Part #2820328-2
C/A, INTERNAL HD MINI SAS, 100 OHM, R/A



TE Part #2-2343522-0
SFP56 STACKED 2X2 RECEPTACLE ASSEMBLY



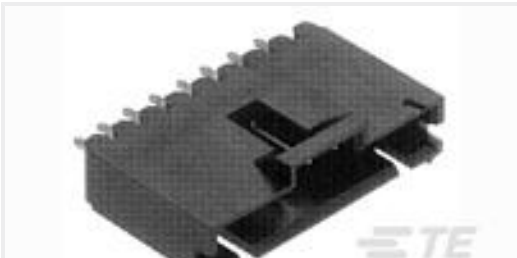
TE Part #1969759-1
Pos Lock 250 M INF SW Hsg 3P MKII V0



TE Part #5-2232546-5
GI2.5 HDR ASS 5P BLK NO BOSS TAPE



TE Part #YDTS20W13-98PAC001
RECP ASSY



TE Part #2-103639-9
10 MTE HDR SRST LATCH .100CL



TE Part #4-644463-1
11P MTA156 CONN ASSY 22AWG RED

Documents

Product Drawings

TWO-PIECE POKE-IN, 5MM HEADER, 6 POS

English

CAD Files

3D PDF

3D

Customer View Model

ENG_CVM_CVM_2318770-6_A.2d_dxf.zip



English

Customer View Model

[ENG_CVM_CVM_2318770-6_A.3d_igs.zip](#)

English

Customer View Model

[ENG_CVM_CVM_2318770-6_A.3d_stp.zip](#)

English

By downloading the CAD file I accept and agree to the [Terms and Conditions](#) of use.

Datasheets & Catalog Pages

[BUCHANAN WireMate TWO-PIECE POKE-IN SERIES](#)

[BUCHANAN WireMate TWO-PIECE POKE-IN SERIES](#)

English

Product Specifications

[Application Specification](#)

English

Agency Approvals

[UL Report](#)

English