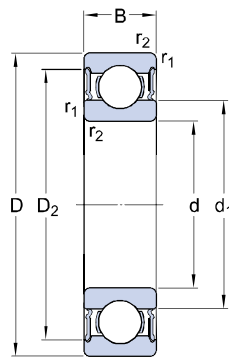




# Deep groove ball bearings, single row, stainless steel

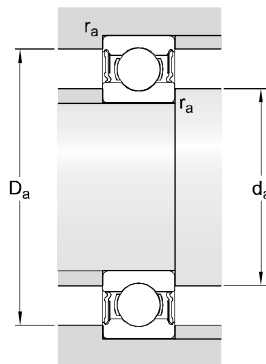
W 6006-2RS1/VP311

## Dimensions



d		30	mm
D		55	mm
B		13	mm
d <sub>1</sub>	≈	38	mm
D <sub>2</sub>	≈	49.9	mm
r <sub>1,2</sub>	mi n.	1	mm

## Abutment dimensions



d <sub>a</sub>	mi n.	35	mm
d <sub>a</sub>	ma x.	37.5	mm
D <sub>a</sub>	ma x.	50.5	mm
r <sub>a</sub>	ma x.	1	mm

## Calculation data

Basic dynamic load rating	C	11.4	kN
Basic static load rating	C <sub>0</sub>	8.1	kN
Fatigue load limit	P <sub>u</sub>	0.35	kN
Limiting speed		8000	r/min
Calculation factor	k <sub>r</sub>	0.03	
Calculation factor	f <sub>0</sub>	14.7	

## Mass

Mass bearing		0.113	kg
--------------	--	-------	----