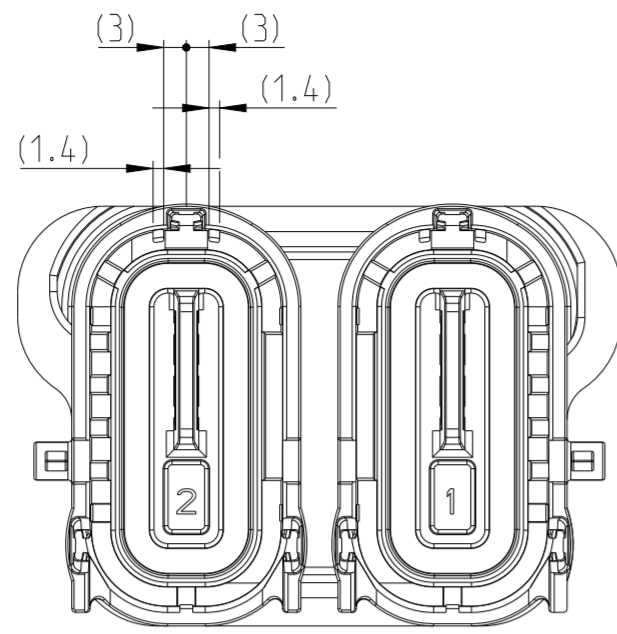
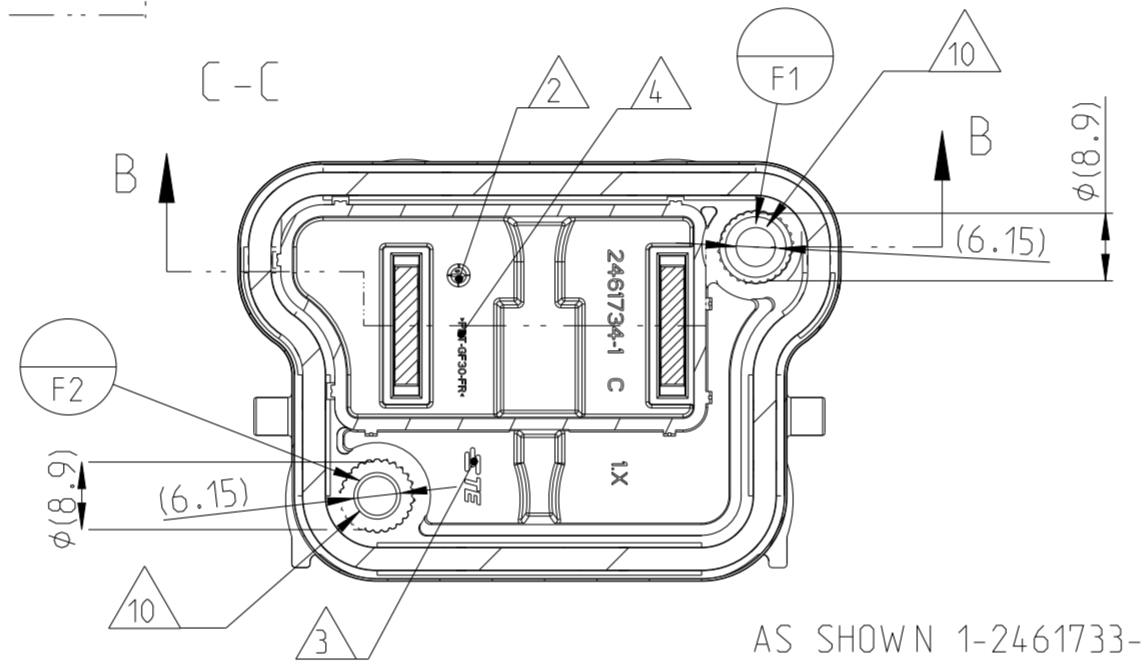
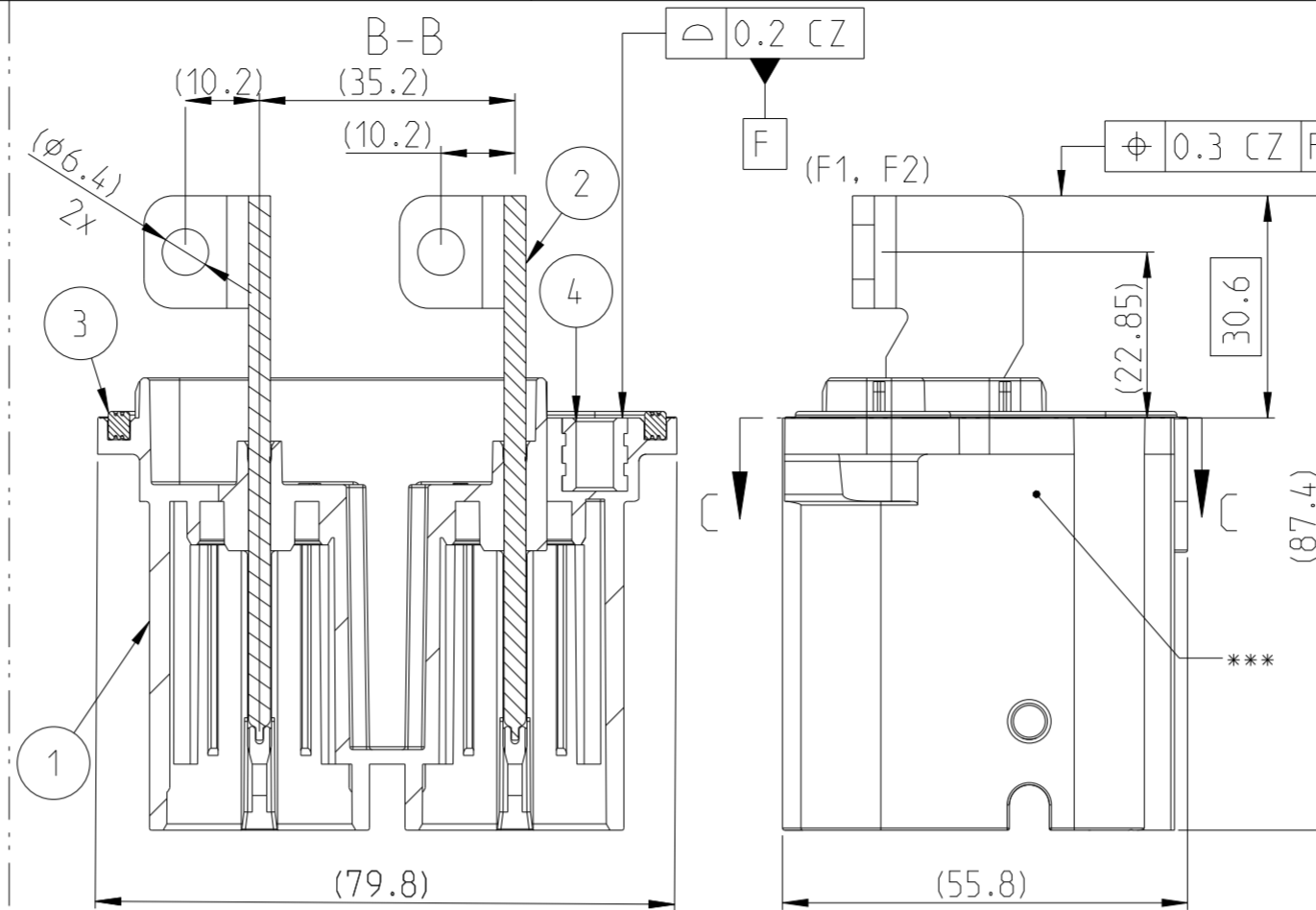


AS SHOWN 0-2461733-1
CODING A
Kodierung A



AS SHOWN 0-2461733-2
CODING B
Kodierung B



AS SHOWN 1-2461733-1

REVISIONS				
P	LTR	DESCRIPTION	DATE	APVD
A		NEW DRAWING	14DEC2023	PW
B		E-24-206962: PRODUCT IMPROVEMENT	25APR2024	PW
B1		E-24-209541: Drawing Update	02AUG2024	PW
C		ECN-25-360055: New Sub Comp REV.	17DEC2025	PW

NOTES
Bemerkungen

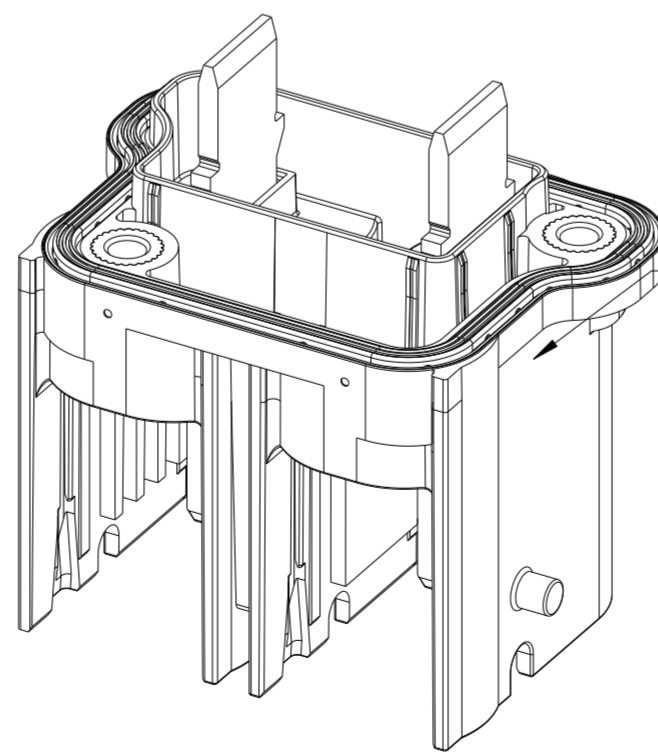
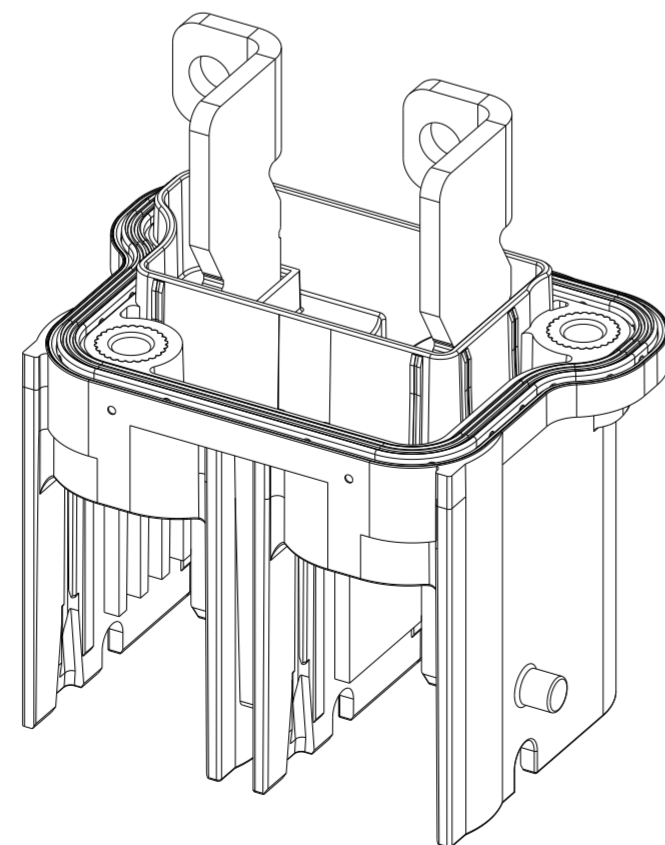
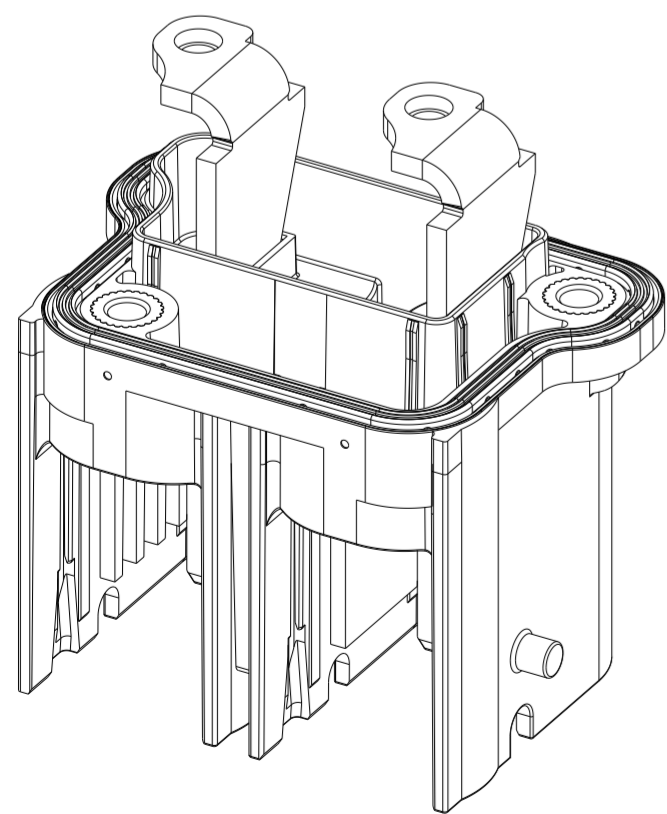
- 1 TE-CONNECTIVITY ORDER-NUMBER
TE-Connectivity Bestellnummer
- 2 PRODUCTION DATE
Produktionsdatum
- 3 TE-LOGO
TE-Logo
- 4 MATERIAL MARKING
Materialkennzeichnung
- 5 DIFFERENT CODINGS
Unterschiedliche Kodierungen
- 6 SUITABLE TO COUNTERPART PN 2461719-X or 2461726-X
Passend zu Gegenstueck PN 2461719-X oder 2461726-X
- 7 MALFUNCTION CAUSED BY LACQUER IS NOT COVERED BY TE WARRANTY.
Funktionsbeeinträchtigung durch Lackieren liegt nicht im Einfluss und Gewährleistungsumfang von TE
- 8 PACKED IN TRAY OR SPECIAL FORM ACCORDING TO TE PACKAGING SPECIFICATION
Verpackt im Tray oder Spezialform nach TE Verpackungsspezifikation.
- 9 MAX. TORQUE 10.0 ± 1.0 Nm FOR M6x1 SCREW
Maximales Drehmoment 10.0 ± 1.0 Nm für M6x1 Schraube
- 10 REQUIREMENTS FOR SEALING AREA ON CUSTOMER HOUSING: $\square 0.1 R_z 6.3 \mu m$
Anforderungen für Dichtungsbereich am Kundengehäuse:
- 11 SCREW IN DEPTH "T": 7.5mm<T<8.5mm
EINSCHRAUBTIEFE "T": 7.5mm<T<8.5mm
- 12 MOUNTING THICKNESS INFLUENCES CREEPAGES AND CLEARANCES
Dicke der Befestigung beeinflusst Luft- und Kriechstrecken

DELIVERY CONDITION: $\triangle 7$
Lieferzustand

PCON21 CONTACT 180°
pcon21 Kontakt 180°
AS SHOWN 0-2461733-1

PCON21 CONTACT 90°
pcon21 Kontakt 90°
AS SHOWN 1-2461733-1

PCON21 CONTACT FLAT
pcon21 Kontakt gerade
AS SHOWN 2-2461733-1



PCON21 CONTACTS 180°, 90° & FLAT IN CODINGS A & B
PCON21 Kontakt 180°, 90° & flat in Kodierung A & B

QTY REQ PER ASSY TC PN	DESCRIPTION	MATERIAL	COLOUR	ITEM NO.
2	INSERT. M6. OVERMOLDED Einsatz. M6. Umspritzt	METAL	ZINC PLATED Zink	4
1	Sealing for tab header Dichtung fuer Messerleist	SILICON	RED rot	3
2	PCON 21 CONTACT FLAT PCON 21 kontakt gerade	Cu	SILVER silber	2
-	PCON 21 CONTACT BENTED 90° PCON 21 kontakt gebogen 90°	Cu	SILVER silber	2
-	PCON 21 CONTACT BENTED 180° PCON 21 kontakt gebogen 180°	Cu	SILVER silber	2
1	2POS 180 DEG HEADER COD B 2pol 180 Grad Stiflleiste Kod B	PBT-GF30 FR	BLACK schwarz	1
-	2POS 180 DEG HEADER COD A 2pol 180 Grad Stiflleiste Kod A	PBT-GF30 FR	EMERALD GREEN smaragdgruen	1

TE ORDER-NO.					
REVISION OF EACH ASSY NO (WHEN BLANK, USE DWG REVISION)					
WEIGHT OF EACH ASSY NO [g]					
PARTS LIST					
2-2	2-1	1-2	1-1	0-2	0-1
C	C	C	C	C	C
168.4	168.4	185.7	185.7	180.4	180.4

THIS DRAWING IS A CONTROLLED DOCUMENT.

DWN	U. Siegel	14DEC2023
CHK	P. Wrobel	14DEC2023
APVD	F. Eltron	15DEC2023

TE Connectivity

2POS. HEADER HSG. ASSY
2pol. Stiflleistengehaeuse ASSY
2Pol. Stiflleistengehaeuse Assembly

108-94935
114-97587

SCALE 1:1 SHEET 1 OF 2 REV C

