

FEATURES

- Clevis fasteners made from grade 303 stainless steel
- M8 x 1.25 rod connection thread
- Ball diameter of 8mm
- Overall length of 42mm
- Overall width of 16mm
- Zinc finish for corrosion-resistant finish
- Easy installation
- Maintenance free

RS PRO Stainless Steel M8 x 1.25 Clevis, 42mm x 16mm

RS Stock No.: 347-3259



RS Professionally Approved Products bring to you professional quality parts across all product categories. Our product range has been tested by engineers and provides a comparable quality to the leading brands without paying a premium price.

Product Description

These small but sturdy clevis fasteners are part of our tried-and-tested RS PRO range. They're U-shaped fasteners with a bolt onto which items can be hooked. These fasteners incorporate a strong and flexible connection in a space-saving and durable design.

General Specifications

Accessory Type	Clevis
Rod Connection Thread	M8 x 1.25
Material	Stainless Steel 303
Finish	Zinc
Applications	Food, medical, petrochemical aviation and agriculture industries

Mechanical Specifications

Overall Length	42mm
Overall Width	16mm
Ball Diameter	8mm

Approvals

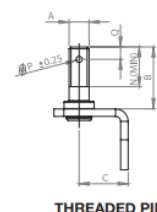
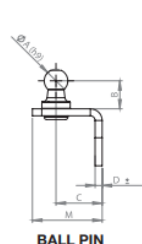
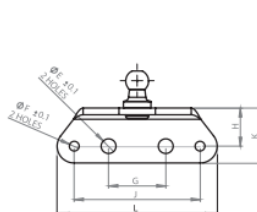
Compliance/Certifications	ANSI/ESD S20.20:2014, BS EN 61340-5-1:2007, BS EN ISO 9001, ASTM B117
----------------------------------	---



MOUNTING BRACKETS

90° Brackets

RS PART NO	CAMLOC PART NO	ALTERNATIVE	A	B	C	D	E	F	G	H	J	K	L	M	N	P	Q	COMPATIBLE CAMLOC END FITTINGS
346-9610	004263	BALL PIN	10	12	20	3	6.5	4.3	25	17	55	24.5	70	30	-	-	-	B8, P8, P9
346-9632	004267	THREADED PIN	M8x1.25	25	20	3	6.5	4.3	25	17	55	24.5	70	30	16	2.5	5	E3, F2, F4, Z2, Z4

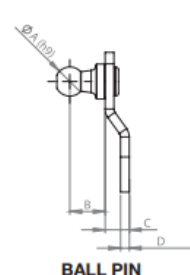
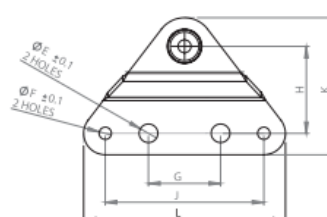


THREADED PIN

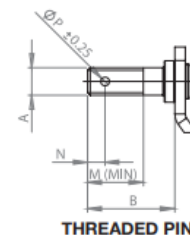
BALL PIN

Flat Brackets

RS PART NO	CAMLOC PART NO	ALTERNATIVE	A	B	C	D	E	F	G	H	J	K	L	M	N	P	COMPATIBLE CAMLOC END FITTINGS
346-9604	004262	BALL PIN	10	12	8	3	6.5	4.3	25	30	55	47.5	70	-	-	-	B8, P8, P9
346-9626	004266	THREADED PIN	M8x1.25	25	8	3	6.5	4.3	25	30	55	47.5	70	16	5	2.5	E3, F2, F4, Z2, Z4



BALL PIN

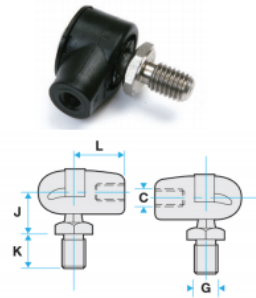


THREADED PIN

END FITTINGS

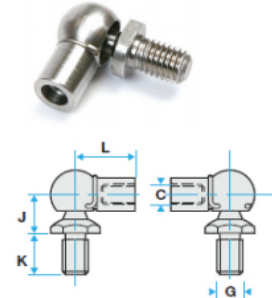
Nylon Ball Joint with 303 Stainless Steel Pin

RS PART NO	CAMLOC PART NO	DIM	PV
339-9088	084255	J +/-	12.0mm 0.25mm
		K +/-	12.5mm 0.25mm
		G	M8x1.25
		C	M6x1.0
		L +/-	18.0mm 0.25mm



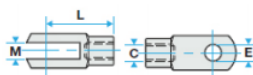
Ball Joints - 303 Stainless Steel

RS PART NO	348-9989	346-9597
CAMLOC PART NO	084331	10-4333
DIM	G1	G5
E +/-	12.0mm 0.25mm	8.0mm H9
M +/-	12.5mm 0.25mm	8.25mm 0.12mm
G	M8x1.25	M8x1.25
L +/-	18.0mm 0.25mm	30.0mm 0.25mm
C	M6x1.0	M8x1.25



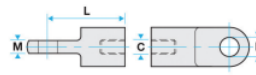
Clevis Forks - 303 Stainless Steel

RS PART NO	347-3243	347-3259
CAMLOC PART NO	084337	10-4338
DIM	H1	H2
E +/-	6.0mm H9	8.0mm H9
M +/-	6.25mm 0.12mm	8.25mm 0.12mm
L +/-	24.0mm 0.25mm	32.0mm 0.25mm
C	M6x1.0	M8x1.25



Stainless Steel Flat Eyes

RS PART NO	347-3265	347-3271
CAMLOC PART NO	08-4334	10-4335
DIM	J1	J2
E +/-	8.0mm H9	8.0mm H9
M +/-	5.12mm 0.12mm	8.12mm 0.12mm
L +/-	25.0mm 0.25mm	32.0mm 0.25mm
C	M6x1.0	M8x1.25



Nylon Eye

RS PART NO	CAMLOC PART NO	DIM	E3
339-9094	080336	E +/-	8.1mm 0.05mm
		M +/-	10.0mm 0.12mm
		L +/-	21.0mm 0.25mm
		C	M6x1.0

