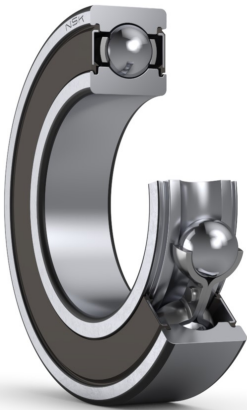




PRODUCT DATASHEET

Datasheet creation date: 2025/07/08 5:16 (UTC)



6303VV

Single-Row Deep Groove Ball Bearings

Parts Number

6303VVC3

Boundary Dimensions

d	17	mm	Bore diameter
D	47	mm	Outside diameter
B	14	mm	Width
r (min.)	1	mm	Chamfer dimension

Basic Load Ratings

Cr	15000	N	Basic dynamic load rating
C0r	6650	N	Basic static load rating

Speeds

Grease	17000	min-1	Grease lubrication
--------	-------	-------	--------------------

Abutment and Fillet Dimensions

da (min.)	22	mm	Diameter of shaft abutment
da (max.)	25.5	mm	Diameter of shaft abutment
Da (max.)	42	mm	Diameter of housing abutment
ra (max.)	1	mm	Radius of shaft or housing fillet
Dx (min.)	0	mm	Diameter of snap ring recess in the housing
Cy (max.)	0	mm	Distance from outer ring side face to snap ring back face

Calculation factors

fo	12.4	Factor
----	------	--------

Additional information

z	7	Number of Balls	
Dw	8.731	mm	Ball Diameter

Mass

Mass approx.	0.113	kg	Mass approx.
--------------	-------	----	--------------

