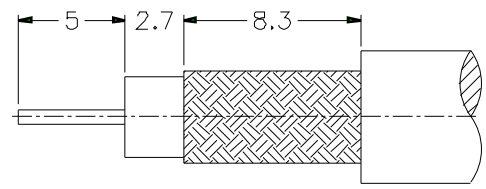
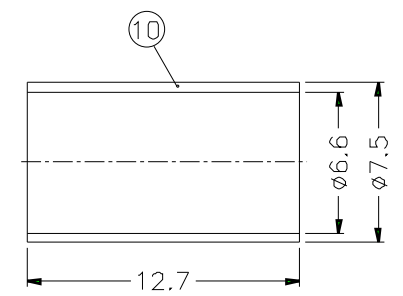
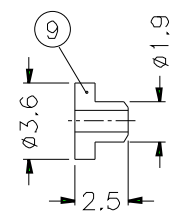
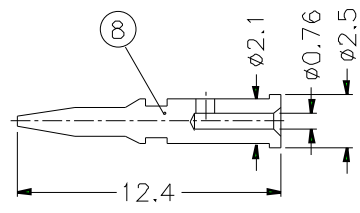
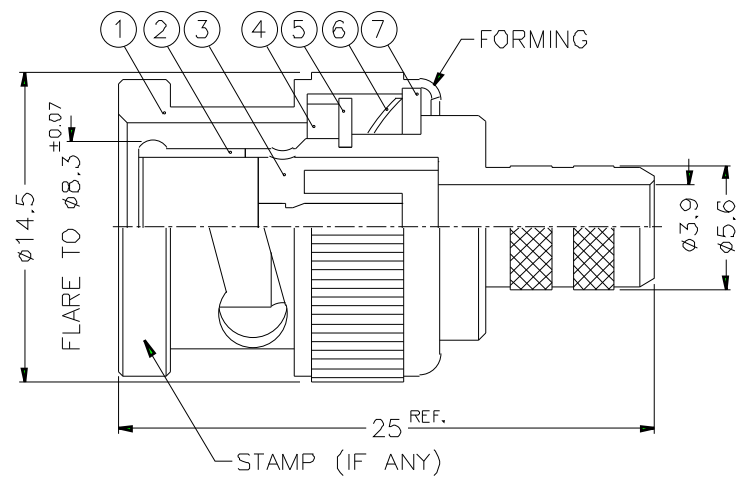


1			2			3			4			5			6			7			8		
REVISIONS																							
ISS	ZONE	DESCRIPTION\PER REQUEST\DATE																					



RECOMMENDED  
CABLE STRIPPING DIM'S



- NOTES: FINISH (PLATING THICKNESS IN MICRO-INCHES)
1. BRASS PER QQ-B-626
  2. BRASS PER QQ-B-613
  3. NICKEL PL. 100 MIN. THICK OVER COPPER STRIKE
  4. NICKEL PL. 200 MIN. THICK OVER COPPER STRIKE
  5. GOLD PL. 3 MIN. THICK OVER NICKEL PL. 100 MIN. THICK OVER COPPER STRIKE
  6. JIS H 3250, C 2700

1. CRIMPED FERRULE  
HEX CRIMP SIZE .255"
2. CRIMPED CONTACT PIN  
HEX CRIMP SIZE .068"

10	FERRULE	NOTE 6	NOTE 3	1	FR-75/66X127
9	INSULATOR	DELTRIN	NATURAL	1	B50000-11-36/1
8	CONTACT PIN	NOTE 1	NOTE 5	1	B50000-8-25/ 076
7	WASHER	NOTE 2	NOTE 3	1	WS-128/9X08
6	SPRING	SK5	NOTE 4	1	B50000-6
5	RETAINER RING	NOTE 1	NOTE 3	1	B50000-5
4	GASKET	RUBBER	RED	1	GS-115/8X15
3	INSULATOR	DELTRIN	NATURAL	1	B50000-3-75-A
2	BODY	NOTE 1	NOTE 3	1	B50000-2-56/39
1	SHELL	NOTE 1	NOTE 3	1	B50000-1-B
NO.	DESCRIPTION	MATERIAL	FINISH	Q'TY	DRAWING NO.

DIMENSIONS ARE IN MILLIMETERS			PART NO.		
UNLESS OTHERWISE SPECIFIED TOLERANCES			B1121A1ND3G375		
0.5-6	= ±0.2		APPROVED	DATE	
6-30	= ±0.4		CHECKED	DATE	
30-120	= ±0.6		DRAWN	DATE	
120-315	= ±1			10-11-01'	
315-1000	= ±1.6			10-11-01'	
1000-2000	= ±2.4			10-11-01'	
SCALE	3/1	ISSUE	A	FILE NO.	

<b>Amphenol</b>		TITLE	BNC CRIMP PLUG
		DRAWING NO.	KJ-B1121A1-ND3G-62AU-75
		ITEM NO.	