

# Signal lamp with integrated filament lamp, 10 mm, square bezel, 28 Volt, bezel green, Flat quick-connect terminal 2.8 x 0.8 tin-plated



## fields of application

- Measurement-control-regulation
- Electrical engineering
- Mechanical and system engineering
- Signalling systems
- Model construction

## special features

- Three shapes: round, square or arrow-shaped
- Integrated luminous element
- Filament lamp, 28 V, color: yellow
- Neon lamp, 230 V, color: red
- Luminous element neon lamp, 230 V, color: green or blue



## description

Signal lamps with integrated filament lamp, neon lamp or luminous element neon lamp, mounting hole diameter 10 mm

## technical data

### ➤ general

Bezel color	green
Property of bezel / mushroom	transparent
Bezel shape	square
illuminated	Yes
Packaging unit	10 pcs.
net weight	2.4 g
Degree of protection, front side, according to DIN EN 60529	IP40
MOQ order	50 pcs.
RoHS compliant	Yes
REACH compliant	Yes

### direct links

- [RAFI eCatalog](#)

### ➤ mounting diameters

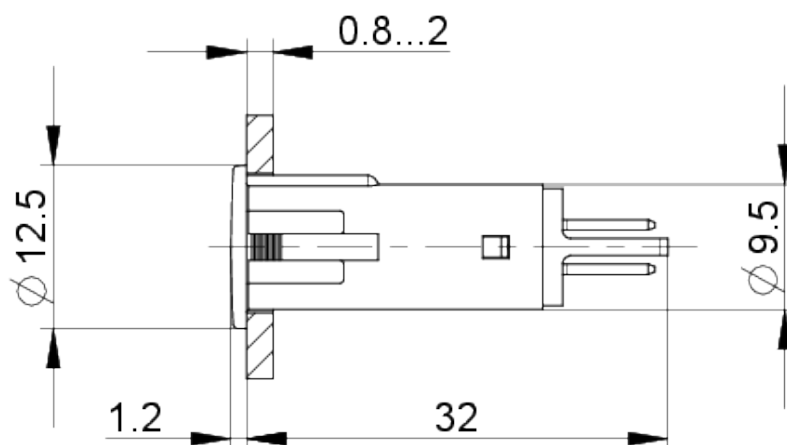
Mounting hole	10 mm
Mounting depth	30 mm
Installation height	3 mm

### ➤ mechanical data

Fixing	Pushing into mounting hole
Solderability	Yes
Terminal on the rear	Flat quick-connect terminal 2.8 x 0.8 tin-plated

### ➤ electrical data

Operating voltage of the luminous element, max.	28 V
---	------

**drawings****Dimensioned drawing****Mounting hole drawing**