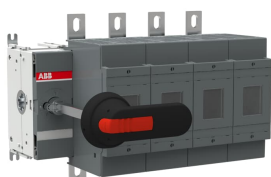


PRODUCT-DETAILS

# OS40FDS30000

## OS40FDS30000 SWITCH FUSE



### General Information

Extended Product Type	OS40FDS30000
Product ID	1SCA108942R1001
EAN	6417019421933
Catalog Description	OS40FDS30000 SWITCH FUSE
Long Description	Switch Fuses,Side Operated,3-pole,30 (Right Side),DIN,000,Handle and shaft not included,Switched - Fusible Pole

### Ordering

Minimum Order Quantity	1 piece
Customs Tariff Number	85365080
Country of Origin	Lithuania (LT)

### Popular Downloads

Data Sheet, Technical Information	1SCC311129D0201
Instructions and Manuals	1SCC311030M0202

### Dimensions

Product Net Width	126 mm
-------------------	--------

Product Net Height	97 mm
Product Net Depth / Length	141 mm
Product Net Weight	0.7 kg

## Technical

Rated Operational Current AC-21A ( $I_e$ )	(500 V) 40 A (690 V) 40 A
Rated Operational Current AC-22A ( $I_e$ )	(500 V) 40 A (690 V) 40 A
Rated Operational Current AC-23A ( $I_e$ )	(500 V) 40 A (690 V) 40 A
Rated Operational Power AC-23A ( $P_e$ )	(220 ... 240 V) 11 kW (400 V) 18.5 kW (415 V) 18.5 kW (500 V) 22 kW (690 V) 30 kW
Conventional Free-air Thermal Current ( $I_{th}$ )	q = 40 °C 40 A
Conventional Thermal Current ( $I_{the}$ )	Fully Enclosed 40 A
Rated Impulse Withstand Voltage ( $U_{imp}$ )	12 kV
Rated Insulation Voltage ( $U_i$ )	1000 V
Rated Operational Voltage	500 V
Rated Short-time Withstand Current ( $I_{cw}$ )	for 1 s 1 kiloampere rms
Rated Conditional Short-Circuit Current ( $I_{nc}$ )	(690 V) 80 kA
Power Loss	at Rated Operating Conditions per Pole 4.5 W
Pollution Degree	3
Handle Type	Handle and shaft not included
Switches Operating Mechanism	30 (Right Side)
Position of Line Terminals	Top In - Bottom Out, Bottom In - Top Out
Fuse Size	000
Fuse System	DIN
Operating Mode	Side Operated
Standards	IEC 60947-3
Mounting Type	Base mounting
Number of Poles	3
Cable Cross-Section	2.5 ... 25 mm <sup>2</sup>
Terminal Type	Screw Terminals
Tightening Torque	2 N·m
Fuse Type	DIN

## Environmental

RoHS Status	Following EU Directive 2011/65/EU and Amendment 2015/863 July 22, 2019
-------------	--

## Certificates and Declarations (Document Number)

CCC Certificate	CCC OS200-250 2016
Declaration of Conformity - CE	1SCC311129D2702

DNV GL Certificate	1SCC311125D0203
EAC Certificate	EAC OT_OTDC_OTL_OTP_OTR_OTU_OTE_OETL_OESA_OESC_OTM_OS_OSM_p f
Instructions and Manuals	1SCC311030M0202
RoHS Information	1SCC311106D0203

## Container Information

Package Level 1 Units	box 1 piece
Package Level 1 Width	240 mm
Package Level 1 Depth / Length	120 mm
Package Level 1 Height	130 mm
Package Level 1 Gross Weight	0.7 kg
Package Level 1 EAN	6417019421933

## Classifications

Object Classification Code	Q
ETIM 4	EC001040 - Fuse switch disconnecter
ETIM 5	EC001040 - Fuse switch disconnecter
ETIM 6	EC001040 - Fuse switch disconnecter
ETIM 7	EC001040 - Fuse switch disconnecter
WEEE Category	5. Small Equipment (No External Dimension More Than 50 cm)
E-Number (Finland)	3661972

## Categories

Low Voltage Products and Systems → Switches → Switch Fuses

