

Si5350/51 TIMING TOOLSTICK QUICK-START GUIDE

1. Software installation

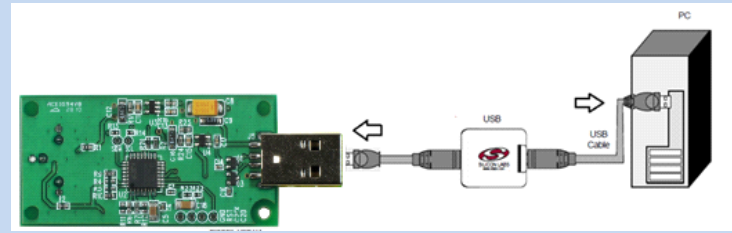
- Click on Si5350ClockBuilder from software CD, or download from www.silabs.com/ClockBuilder
- Click "install" to download USB driver.



Driver installation happens automatically after the installer is completed.

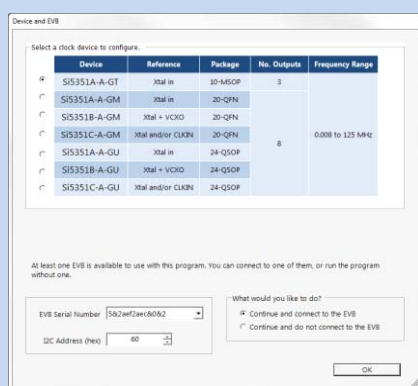


2. Plug into USB



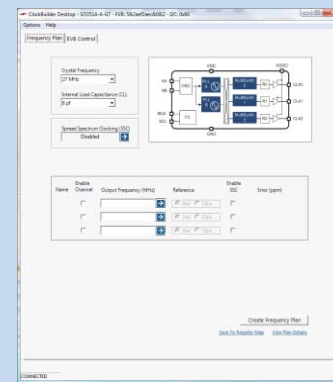
Plug the Timing ToolStick into a PC.

3. Select Timing ToolStick



Select Timing ToolStick from ClockBuilder.

4. Enter frequencies



Click on "→" and enter any 3 unique, non-integer related frequencies. Check the enable channel box and "Create frequency plan." The frequencies are stored in flash memory on the ToolStick. The Si5350/51 is now ready for evaluation!

Table 1. LED Status

LED	Status	Condition
Red	Blinking	USB communications established
Green	Continuous	Powering up of a blank board
Green	Slow blinking	Powering up a flashed board
Red/Green	Blinking simultaneously 3x	Error detected

For additional information, use the following support resources:

- Si5350/51 product data sheets: www.silabs.com/Timing
- ClockBuilder desktop: www.silabs.com/Timing
- ClockBuilder web-based part number utility: www.silabs.com/ClockBuilder
- EVB users guides: www.silabs.com/Timing
- AN551: Crystal Selection Guide for Si5350/51: www.silabs.com/Timing
- AN554: Si5350/51 PCB Design Guidelines: www.silabs.com/Timing
- Timing product selector guide: www.silabs.com/Marcom_Documents/Resources