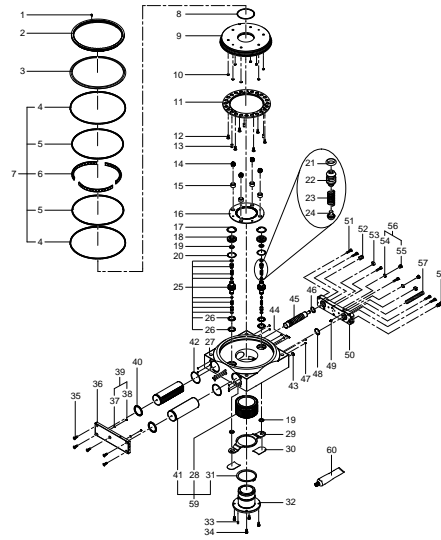


548093 DHTG-220-4-A Rotary indexing table - Series till 08-2015



548093 DHTG-220-4-A Rotary indexing table - Series till 08-2015

Pos.	Part no.	Type	Note	Qty.	Unit
A	736122	DHTG-220-DYNAMISCH Set of wearing parts	Spare parts: 8, 17, 19, 20, 21, 22, 23, 24, 26, 31, 40, 60 Replacing the wearing parts	1	PC
1	218261	DIN 921-M3X6-5.8 Flat Head Screw	Tightening torque 0.6 Nm / 0.4 lbf ft	1	PC
2	742855	DHTG-220 Clamping ring		1	PC
3	736126	DHTG-220 Disc seal	Not included in wearing-parts kit	1	PC
4			Not available separately, see position 7	2	PC
5			Not available separately, see position 7	2	PC
6			Not available separately, see position 7	3	PC
7	742859	DHTG-220 Bearing module		1	PC
8			Not available separately, see position A Grease using during assembly. See position 60	1	PC
9	742863	DHTG-220 Plate-1		1	PC
10			Not available separately, see position 998	8	PC
11			Not available separately, see position 997	1	PC
12	253037	DIN 7991-M6X16-8.8 Countersunk screw	Tightening torque 7 Nm / 5.2 lbf ft	6	PC
13	367167	DIN 6325-8M6X16 Cylindrical pin		3	PC
14	744172	DHTG-140/-220 Compression spring		4	PC
15	744173	DHTG-140/-220 Sleeve		4	PC
16	744171	DHTG-220 Annular gear		1	PC
17	691135	F-40X1,75 Retaining ring		2	PC
18	742887	DHTG-220 Cover		2	PC
19			Not available separately, see position A Grease using during assembly. See position 60	4	PC
20			Not available separately, see position A Grease using during assembly. See position 60	2	PC
21			Not available separately, see position 25+999 Grease using during assembly. See position 60	4	PC
22	5277559	DHTG-65/90/140/220 Stop pin		4	PC
23			Not available separately, see position 25+999	4	PC
24			Not available separately, see position 25+999 Grease using during assembly. See position 60	4	PC
25	742902	DHTG-220 Bolt	Grease using during assembly. See position 60	2	PC
26			Not available separately, see position 25+999 Grease using during assembly. See position 60	4	PC
27			Not available	1	PC
28	742871	DHTG-220 Pinion		1	PC
29	742879	DHTG-220 Sheet metal		1	PC

Pos.	Part no.	Type	Note	Qty.	Unit
30	742883	DHTG-220 Covering		2	PC
31	743294	DIN 471-82X2,5 Retaining ring		1	PC
32	742875	DHTG-220 Flange		1	PC
33	367166	DIN 6325-6M6X12 Cylindrical pin		1	PC
34	200684	ISO 4762-M6X12-10.9 Socket head screw	Tightening torque 9.9 Nm / 7.3 lbf ft	4	PC
35	744174	DIN 7991-M6X20-8.8 Countersunk screw	Tightening torque 5.9 Nm / 4.4 lbf ft	5	PC
36	5280377	DHTG-220 Plate module		1	PC
37		OK-M3 Sealing ring	Not available separately, see position 39	1	PC
38		B-M3-S9 Plug screw	Not available separately, see position 39 Tightening torque 0.5 Nm / 0.4 lbf ft	1	PC
39	30979	B-M3-S9 Blanking plug		2	PC
40			Not available separately, see position A Grease using during assembly. See position 60	2	PC
41			Not available separately, see position 59	2	PC
42			Not available separately, see position 998	2	PC
43			Not available separately, see position 998	1	PC
44			Not available separately, see position 998	4	PC
45	647721	YSRD-20-20-C Shock absorber module		1	PC
46	201028	J-26 Retaining ring		1	PC
47			Not available separately, see position 998	13	PC
48			Not available separately, see position 998	1	PC
49			Not available separately, see position 998	1	PC
50	2757666	DHTG-220 Plate module		1	PC
51		ISO 4762-M6X25-A2-70 Socket head screw	Not available Tightening torque 9.9 Nm / 7.3 lbf ft	6	PC
52			Not available separately, see position 997	1	PC
53	699257	DGSL-20 Clamping component	Tightening torque 2.5 Nm / 1.8 lbf ft	2	PC
54		OK-1/8 Sealing ring	Not available separately, see position 56	1	PC
55		DIN 908-G1/8-ST Plug screw	Not available separately, see position 56	2	PC
56	3568	B-1/8 Blanking plug		2	PC
57			Not available separately, see position 997	1	PC
58	396917	GRLA-1/8-QS-8-D Hollow bolt module	Tightening torque 5.5 Nm / 4.1 lbf ft	1	PC
59	742867	DHTG-220 Pinion module		1	PC
60	394819	LUB-E1-SILIKONFREI-20ML Lubricating grease		1	PC
99 7	555447	DADM-CK-220-3 Indexing conversion kit	Please order this position from the catalogue as an accessory.	1	PC
99 8	736118	DHTG-220-STATISCH Set of wearing parts		1	PC