

# EV-T1CCS-MF-M4X10-CTS - Repair kit



1281251

<https://www.phoenixcontact.com/in/products/1281251>

Please be informed that the data shown in this PDF document is generated from our online catalog. Please find the complete data in the user documentation. Our general terms of use for downloads are valid.



CHARX connect professional, CCS type 1, Repair kit, Accessories, Screw mounting, housing: black, with DC contact holder with integrated front part of the DC contacts, with replaceable mating face frame, with 5x M4X10 flat-head screws with Torx safety drive (IPR TORX PLUS®), for replacement of the mating face frame of vehicle charging connectors, IEC 62196-3-1, SAE J1772, Replacement without draining the coolant

## Product description

Repair kit with replaceable mating face frame for CCS type 1 HPC DC vehicle connector

## Your advantages

- Complete product range
- Developed and produced in accordance with the IATF 16949 automotive standard and ISO 9001
- Maintenance-friendly replacement of the mating face frame without draining the coolant

## Commercial data

Item number	1281251
Packing unit	1 pc
Minimum order quantity	1 pc
Sales key	*****
Product key	XWBABF
GTIN	4063151478841
Weight per piece (including packing)	263.5 g
Weight per piece (excluding packing)	263.5 g
Customs tariff number	85389099
Country of origin	DE

# EV-T1CCS-MF-M4X10-CTS - Repair kit



1281251

<https://www.phoenixcontact.com/in/products/1281251>

## Technical data

### Notes

General	Replacement without draining the coolant
General	The vehicle connector housing does not have to be opened in order to replace the mating face frame.

### Product properties

Product type	Repair kit
Product family	CHARX connect professional
Application	for replacement of the mating face frame of vehicle charging connectors
Type	Accessories
Design	with DC contact holder with integrated front part of the DC contacts
	with replaceable mating face frame
	with 5x M4X10 flat-head screws with Torx safety drive (IPR TORX PLUS®)
Technology	Combined Charging System
	High Power Charging
Charging standard	CCS type 1
Charging mode	Mode 4

### Material specifications

Color (Housing)	black (9005)
Material (Housing)	Plastic

### Environmental and real-life conditions

#### Ambient conditions

Ambient temperature (operation)	-30 °C ... 50 °C
Ambient temperature (storage/transport)	-40 °C ... 80 °C

### Standards and regulations

#### Standards

Standards/regulations	IEC 62196-3-1
	SAE J1772

### Mounting

Mounting type	Screw mounting
---------------	----------------

# EV-T1CCS-MF-M4X10-CTS - Repair kit

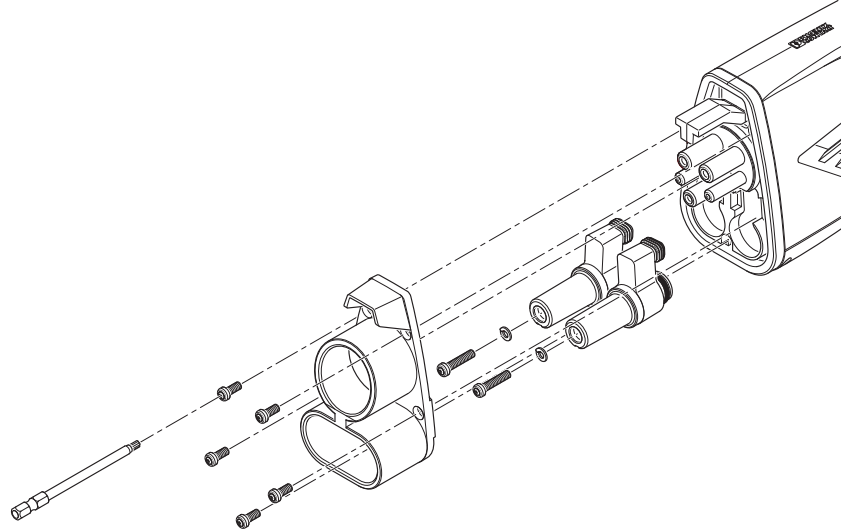


1281251

<https://www.phoenixcontact.com/in/products/1281251>

## Drawings

Schematic diagram



Assembly drawing

# EV-T1CCS-MF-M4X10-CTS - Repair kit



1281251

<https://www.phoenixcontact.com/in/products/1281251>

## Classifications

### ECLASS

ECLASS-11.0	27144792
ECLASS-12.0	27144792
ECLASS-13.0	27144792

### ETIM

ETIM 9.0	EC002884
----------	----------

### UNSPSC

UNSPSC 21.0	39121500
-------------	----------

# EV-T1CCS-MF-M4X10-CTS - Repair kit



1281251

<https://www.phoenixcontact.com/in/products/1281251>

## Environmental product compliance

### EU RoHS

Fulfills EU RoHS substance requirements	Yes, No exemptions
-----------------------------------------	--------------------

### China RoHS

Environment friendly use period (EFUP)	EFUP-10
	An article-related China RoHS declaration table can be found in the download area for the respective article under "Manufacturer declaration". For all articles with EFUP-E, no China RoHS declaration table issued and required.

### EU REACH SVHC

REACH candidate substance (CAS No.)	No substance above 0.1 wt%
-------------------------------------	----------------------------

Phoenix Contact 2025 © - all rights reserved  
<https://www.phoenixcontact.com>

PHOENIX CONTACT (I) Pvt. Ltd.  
A-58/2, Okhla Industrial Area, Phase - II, New Delhi-110 020

+91.1275.71420  
[info@phoenixcontact.co.in](mailto:info@phoenixcontact.co.in)