

## Description

STAINLESS STEEL BOLT HOLE CASTOR, RED POLYURETHANE 80MM

### Fixed

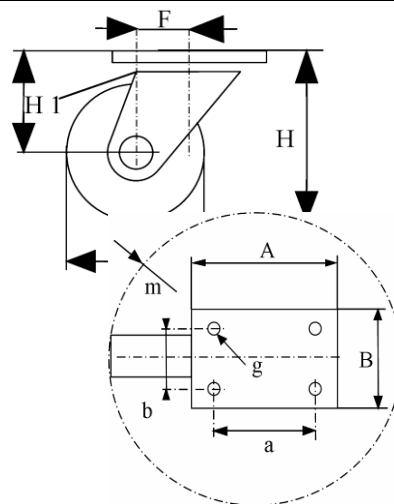
**Part Number**  
**Swivel**  
**KP41OA080-28L**



**Swivel and brake**  
**KP41OD080-28L**



	Fixed	Swivel	Swivel+brake
Wheel Diameter ØD	80 mm		
Overall Height H	108 mm ±1		
Center hole	13 mm		
Offset F ±1	\	42 mm	42 mm
Width of Tread	32 mm±0,5		
Hardness of tread	shore A ± 98		
Load capacity	150 Kg		
Weight		0,50 kg	0,6 kg
Temperature	- 20 / + 60 °C		



### Castor Assembly :

Pressed stainless steel -AISI 304-. Swivel on two rows of balls.  
Central bolt hole fitting  
Total lock. Metal pedal.

### Wheel :

Wheel centre made of White Polyamide.  
Tread : Red injected Polyurethane non marking.  
Hub : Plain bore.

### Features :

Low starting effort. High load capacity.  
Lightweight, highly resistant to knocks and other impacts, abrasion as well as a great many chemical substances.  
Corrosion resistant, easy to clean. Specially designed for humid environments.  
Suited for Food industry, Hospital or Industrial Kitchen equipment.  
Non staining red tyre.  
Medium duty.