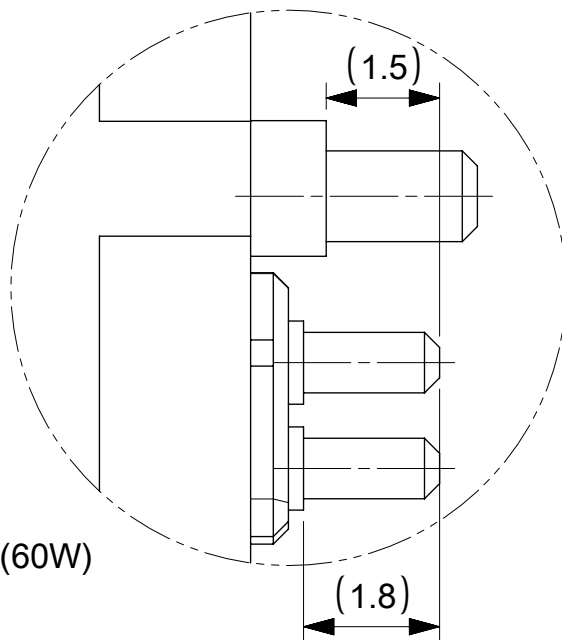


Technical Data:
M12 CAT6A receptacle back mount PCB 360° shielded.
Suited for wave application.

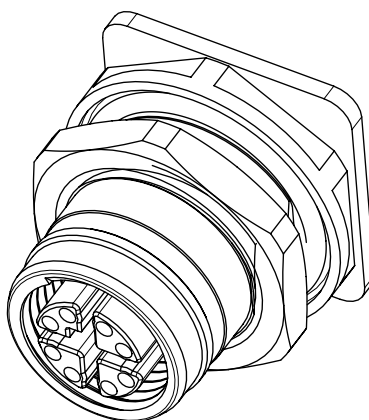
Poles: 8
Max. Voltage: 57V
Max Current: 1A
Contact resistance: Less than 5m Ohm
Insulation withstand: >100M Ohm
Protection: IP67
Temperature range: -40°C to 85°C
Transmission characteristics (category): CAT6
Power Rating: IEEE802.3bt Type 4 Class 6 (60W)

For product specification see: PS-120341-001a

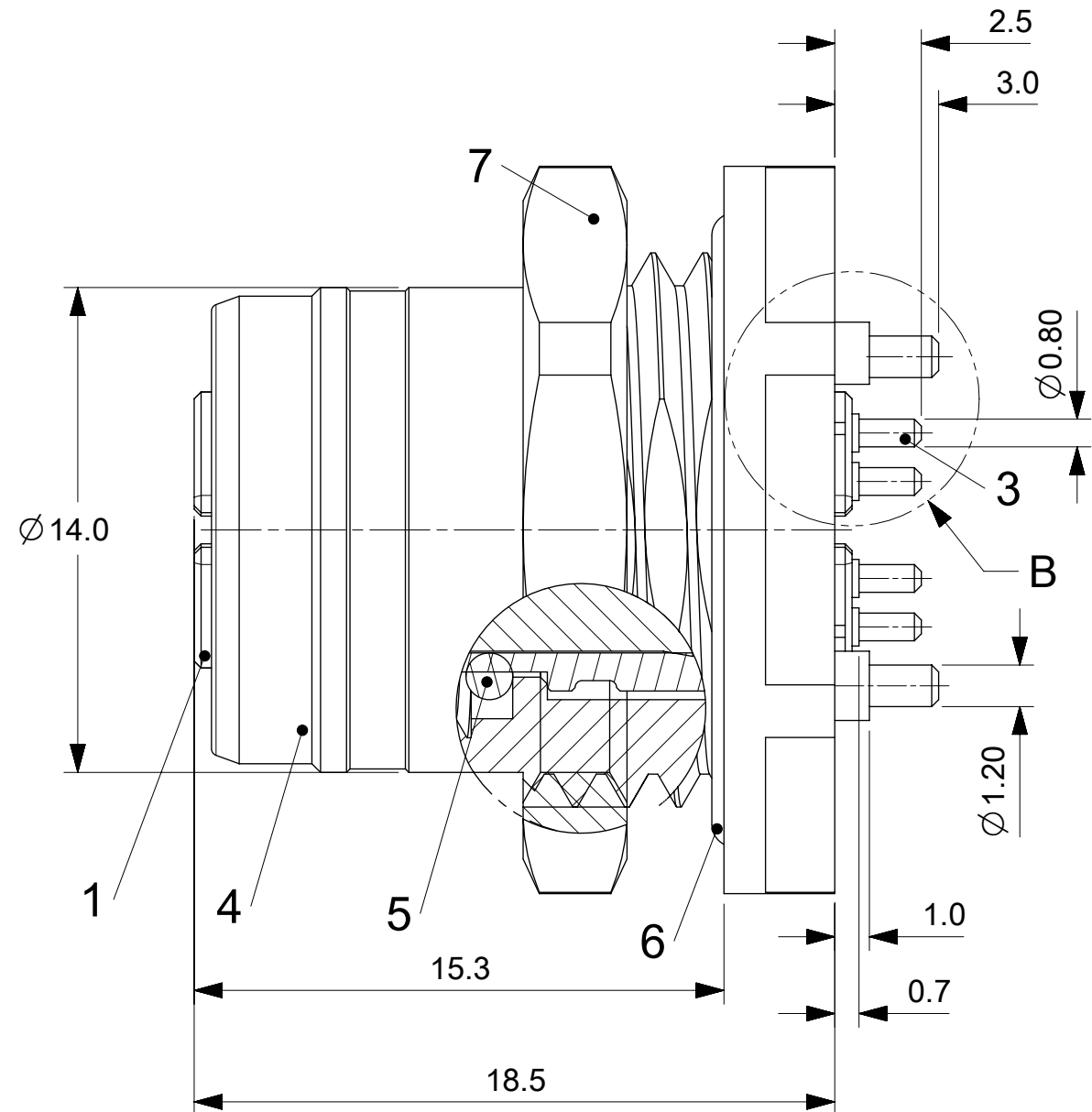
Packaging:
The receptacles are delivered in blister packs a 25 parts.
8 blister packages per carton.
All together 200 parts.



SCALE 2:1



DETAIL B
SCALE 10:1

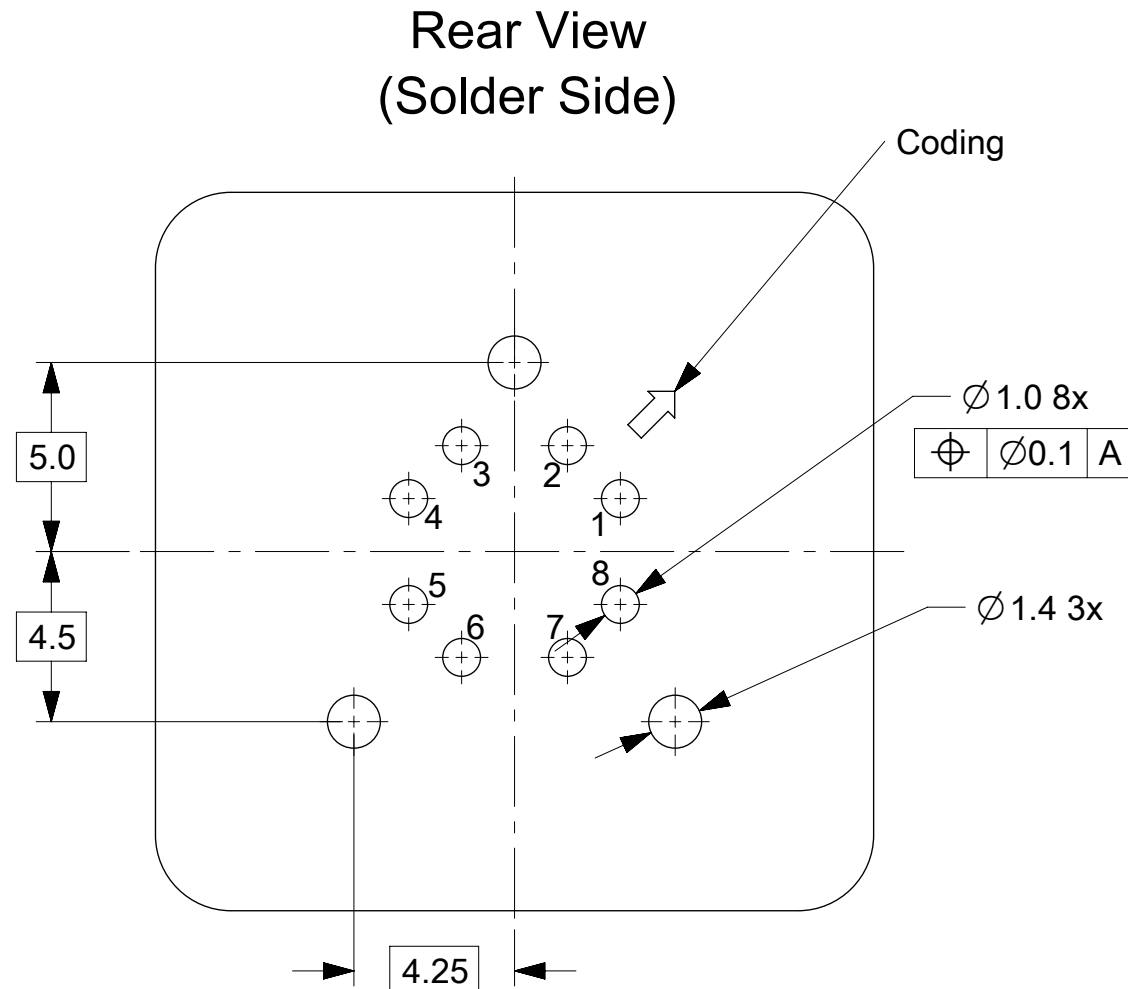
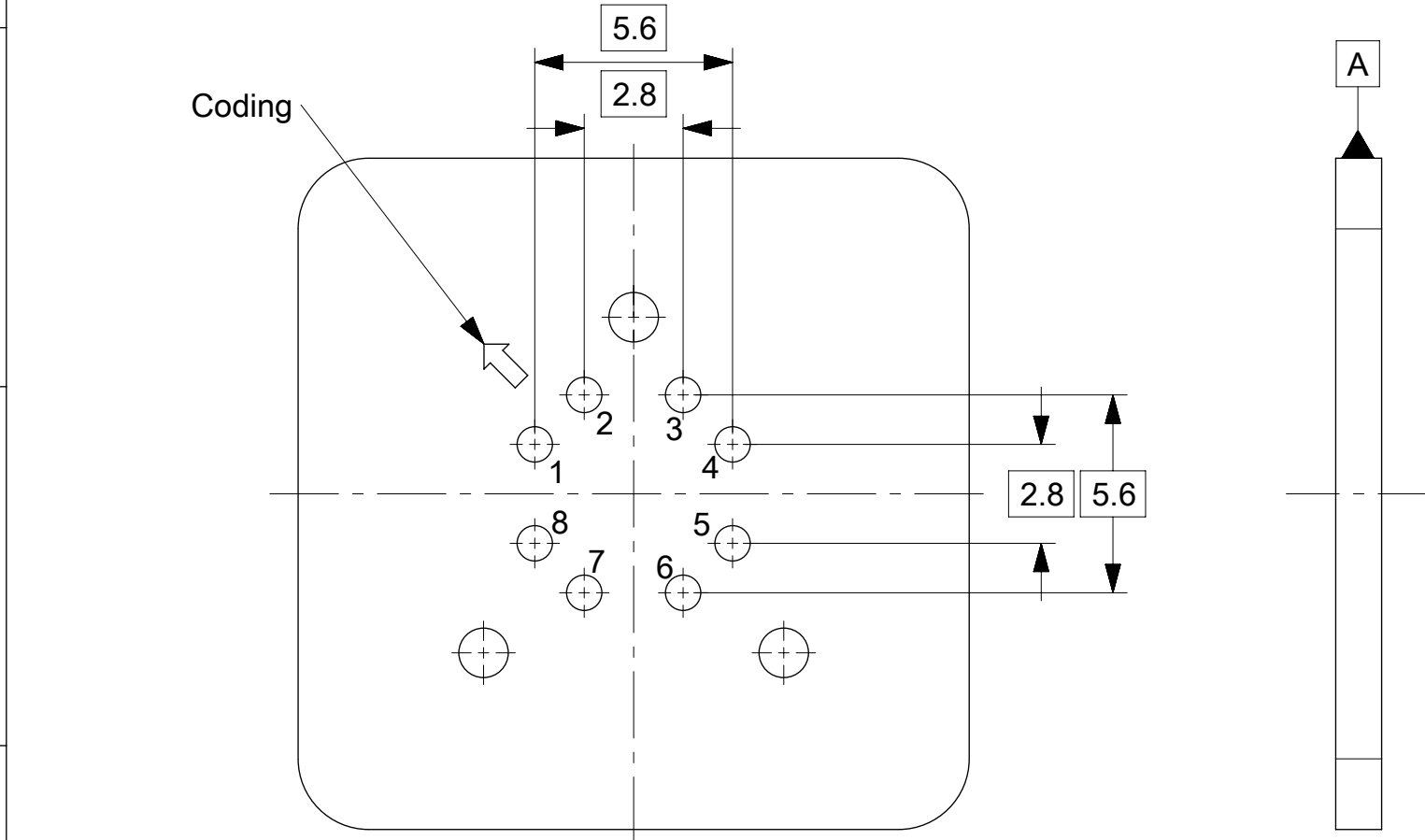


BOM

POS	DESCRIPTION	MATERIAL	FINISH
1	INSERT	PA BK	-
2	SCHIELDING CROSS	BRASS	NICKEL PLATED
3	CONTACT	BRASS	GOLD OVER NICKEL
4	HOUSING	BRASS	NICKEL PLATED
5	O-RING 7.1x1.35	FPM	RED
6	O-RING 15.7x1.3	EPDM BK	-
7	LOCK NUT	BRASS	NICKEL PLATED

FUNCTIONAL SYMBOLS	THIS DRAWING CONTAINS INFORMATION THAT IS PROPRIETARY TO MOLEX ELECTRONIC TECHNOLOGIES, LLC AND SHOULD NOT BE USED WITHOUT WRITTEN PERMISSION											
	DIMENSION UNITS		SCALE		CURRENT REV DESC:			<div>molex</div>				
	mm		5:1									
	<div><div>F</div><div>A</div><div>=</div><div>0</div></div>	GENERAL TOLERANCES (UNLESS SPECIFIED)				REC M12 8P 0C FE FM						
<div><div>F</div><div>E</div><div>=</div><div>0</div></div>	ANGULAR TOL ± 1.0°											
<div><div>F</div><div>E</div><div>=</div><div>0</div></div>	4 PLACES		±		EC NO: 817714 DRWN: MBLOESER 2025/04/02 CHK'D: RSILLER 2025/04/03 APPR: RSILLER 2025/04/03			PRODUCT CUSTOMER DRAWING				
DIVISIONAL SYMBOLS	3 PLACES		±									
	2 PLACES		± 0.05		INITIAL REVISION: DRWN: LRAMAMURTHY 2016/10/06 APPR: RSILLER 2016/12/14			DOCUMENT NUMBER		DOC TYPE	DOC PART	REVISION
	1 PLACE		± 0.3					1203410150		PSD	000	C1
	0 PLACES		± 0.5									
DRAFT WHERE APPLICABLE MUST REMAIN WITHIN DIMENSIONS					THIRD ANGLE PROJECTION		DRAWING	SERIES	MATERIAL NUMBER	CUSTOMER	SHEET NUMBER	
							A3-SIZE	120341		GENERAL MARKET	1 OF 3	

DOCUMENT STATUS	P1	RELEASE DATE	2025/04/03	13:36:59
-----------------	----	--------------	------------	----------



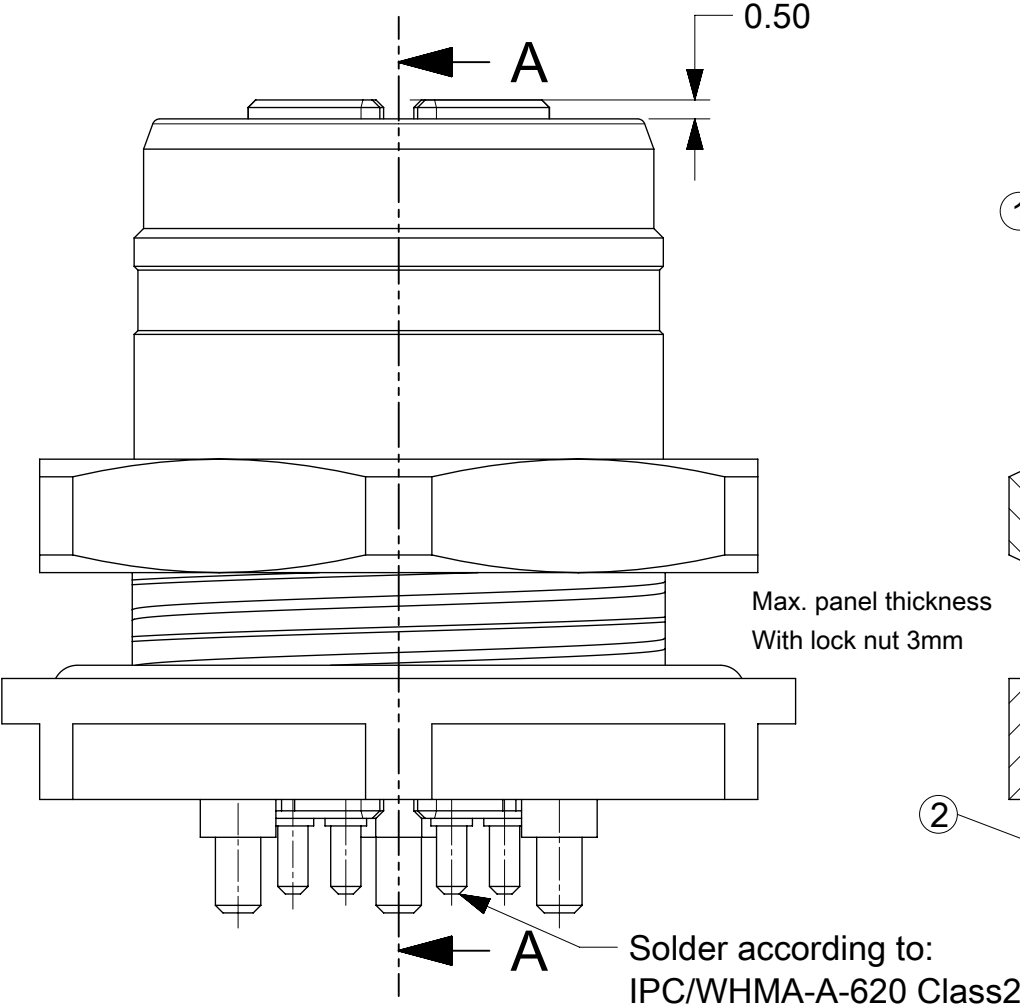
Cable color code and position
on receptacle:
1 white-orange
2 orange
3 white-green
4 green
5 white-brown
6 brown
7 white-blue
8 blue

PCB Pinout

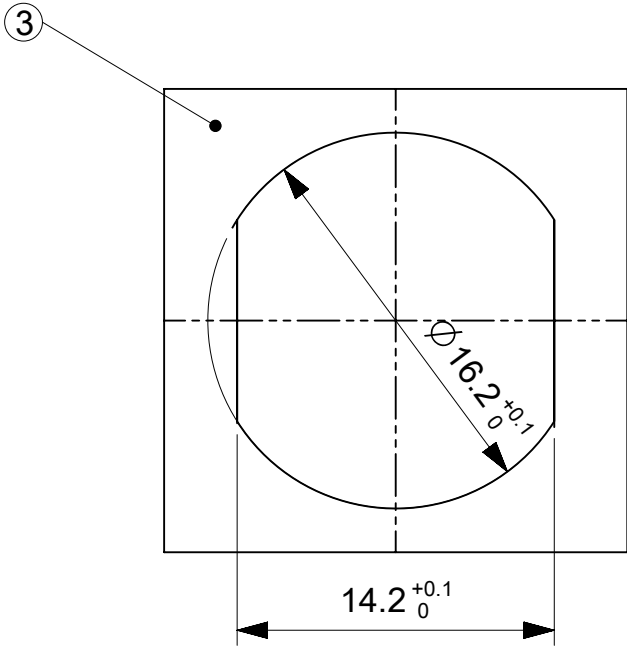
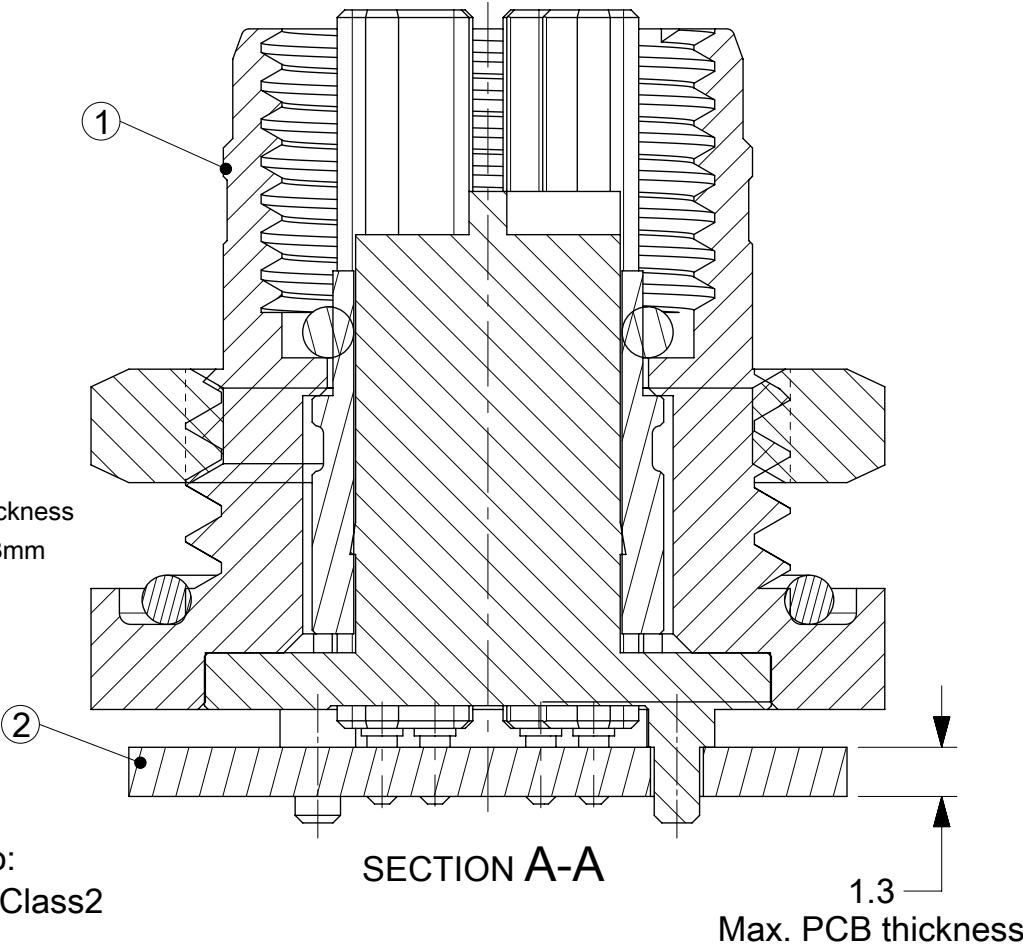
FUNCTIONAL SYMBOLS	THIS DRAWING CONTAINS INFORMATION THAT IS PROPRIETARY TO MOLEX ELECTRONIC TECHNOLOGIES, LLC AND SHOULD NOT BE USED WITHOUT WRITTEN PERMISSION										
<div><div><div><div><div></div><div></div></div><div><div></div><div></div></div></div><div><div></div><div></div></div><div><div></div><div></div></div></div><div><div></div><div></div></div><div><div></div><div></div></div><div><div></div><div></div></div></div> <div><div></div><div></div></div> <div><div></div><div></div></div>	DIMENSION UNITS		SCALE	CURRENT REV DESC: <div><div>EC NO: 817714</div><div>DRWN: MBLOESER2025/04/02</div><div>CHK'D: RSILLER2025/04/03</div><div>APPR: RSILLER2025/04/03</div><div>INITIAL REVISION:</div><div>DRWN: LRAMAMURTHY2016/10/06</div><div>APPR: RSILLER2016/12/14</div></div>				<div>molex</div> <div>REC M12 8P 0C FE FM</div>			
	GENERAL TOLERANCES (UNLESS SPECIFIED)										
	ANGULAR TOL ± 1.0 °							PRODUCT CUSTOMER DRAWING			
	4 PLACES		±								
	3 PLACES		±					1203410150	PSD	000	C1
	2 PLACES		± 0.05								
	1 PLACE		± 0.3								
0 PLACES		± 0.5	MATERIAL NUMBER		CUSTOMER		SHEET NUMBER				
DIVISIONAL SYMBOLS	DRAFT WHERE APPLICABLE MUST REMAIN WITHIN DIMENSIONS		THIRD ANGLE PROJECTION	DRAWING	SERIES	GENERAL MARKET		2 OF 3			

DOCUMENT STATUS	P1	RELEASE DATE	2025/04/03	13:36:59
-----------------	----	--------------	------------	----------

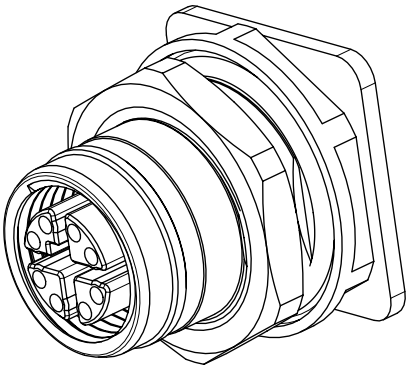
View with lock nut



View without lock nut



- Pos. Description
- 1 Receptacle Back Mount
 - 2 PCB
 - 3 Cutout



SCALE 2:1

- ASSEMBLY OF THE RECEPTACLE:
- The receptacle (1) is soldered to PCB (2)(wave or reflow possible)
The grounding can be over the ground pins of her receptacle
and, if needed, over the midpoint of the shielding cross.
 - The PCB with receptacles is mounted from the back side
into the cutout(3) and fastened per screwing in or locknut.

FUNCTIONAL SYMBOLS	THIS DRAWING CONTAINS INFORMATION THAT IS PROPRIETARY TO MOLEX ELECTRONIC TECHNOLOGIES, LLC AND SHOULD NOT BE USED WITHOUT WRITTEN PERMISSION																
DIVISIONAL SYMBOLS	DIMENSION UNITS		SCALE		CURRENT REV DESC:					<div>molex</div> <div>REC M12 8P 0C FE FM</div>							
	mm		5:1														
	GENERAL TOLERANCES (UNLESS SPECIFIED)				EC NO: 817714 DRWN: MBLOESER 2025/04/02 CHK'D: RSILLER 2025/04/03 APPR: RSILLER 2025/04/03					PRODUCT CUSTOMER DRAWING							
	ANGULAR TOL ± 1.0 °																
	4 PLACES		±														
	3 PLACES		±		INITIAL REVISION: DRWN: LRAMAMURTHY 2016/10/06 APPR: RSILLER 2016/12/14					DOCUMENT NUMBER		DOC TYPE		DOC PART		REVISION	
	2 PLACES		± 0.05							1203410150		PSD		000		C1	
	1 PLACE		± 0.3														
	0 PLACES		± 0.5		THIRD ANGLE PROJECTION					MATERIAL NUMBER		CUSTOMER			SHEET NUMBER		
DRAFT WHERE APPLICABLE MUST REMAIN WITHIN DIMENSIONS				A3-SIZE						120341		GENERAL MARKET			3 OF 3		