

# Bocube

Enclosures, polycarbonate UL 94 V0, single-coloured



B 141309 PC-V0 7035

Order no.: 96013235

\* = Available on request.

## Characteristics

Colour of enclosure group  
Light grey, similar to RAL 7035

Colour of enclosure group  
Light grey

Protection class  
IP 66, 68 - 1,2m (2 hours)

Enclosure Material

ABS or PC UL 94 V0 (material is suitable for outdoor use; f1-listing according to UL 746C)

PU seal, foamed; for details please see Technical Information

Scope of delivery

Lid and base, hinged quick-release catches

## Important!

To compensate for pressure when temperatures change and cause moisture in the enclosure, we recommend that you use a pressure compensation element.

» Additional information

## Technical documentation / Downloads

### Technical drawings

3D product data in STEP format: Registration necessary  
Product drawing in PDF format: 96013235 B-141309-PC-V0-7035.pdf  
(247.6 KB)

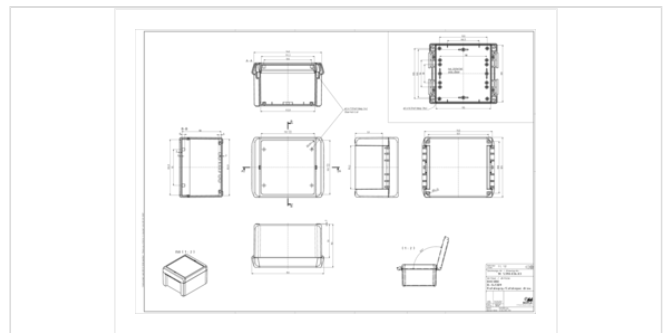
### Product information

Bocube GB.pdf (1.9 MB)  
Highlights Bocube.pdf (3.8 MB)

## Dimensions

Dimensions  
151 x 125 x 90 mm

Product drawing



Product drawing in DXF format: 96013235 B-141309-PC-V0-7035.dxf (3.9 MB)

Drawing for mechanical processing: 96013235 B-141309-PC-V0-7035-G.dxf (3.1 MB)

Milling contours are shown here as a DXF file. (Sub D, USB, HDMI, cable glands, ...)

## Works Test Certificates

688 WPZ-Bocube-PC-V0 DE.pdf (184.6 KB)

689 WPZ-Bocube-ABS DE.pdf (165.1 KB)

689 WPZ-Bocube-ABS EN.pdf (160.3 KB)

688 WPZ-Bocube-PC-V0 EN.pdf (179.1 KB)

## Matching accessories

---



### Hinged quick-release catches (Set), polycarbonate UL 94 V0 or ABS

96310200	B SC 13 PC-V0 3000	For B 1413.., B 1813.., B 2213..	Flame red
96310202	B SC 13 PC-V0 5002	For B 1413.., B 1813.., B 2213..	Ultramarine blue
96310209	B SC 13 PC-V0 6029	For B 1413.., B 1813.., B 2213..	Mint green
96310204	B SC 13 PC-V0 7024	For B 1413.., B 1813.., B 2213..	Graphite grey
96310205	B SC 13 PC-V0 7035	For B 1413.., B 1813.., B 2213..	Light grey
96310203	B SC 13 PC-V0 1023	For B 1413.., B 1813.., B 2213..	Traffic yellow



### Hand-operated hinged catch (set), polycarbonate UL 94 V0 or ABS

96910200	B SC HB 13 PC-V0 3000	For B 1413.., B 1813.., B 2213..	Flame red
96910202	B SC HB 13 PC-V0 5002	For B 1413.., B 1813.., B 2213..	Ultramarine blue
96910209	B SC HB 13 PC-V0 6029	For B 1413.., B 1813.., B 2213..	Mint green
96910204*	B SC HB 13 PC-V0 7024	For B 1413.., B 1813.., B 2213..	Graphite grey
*			
96930205*	B SC HB 13 ABS 7035	For B 1413.., B 1813.., B 2213..	Light grey
*			
96910205*	B SC HB 13 PC-V0 7035	For B 1413.., B 1813.., B 2213..	Light grey
*			
96910203	B SC HB 13 PC-V0 1023	For B 1413.., B 1813.., B 2213..	Traffic yellow



### Wall brackets

96510005	B WL 7035	For B 08... - B 26...	Light grey
96510004	B WL 7024	For B 08... - B 26...	Graphite grey



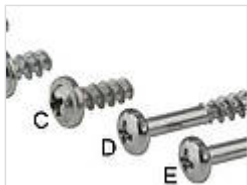
### Mounting panels, laminated paper, 2 mm

96603200	B M 1413	For B 1413..	
----------	----------	--------------	--



### Front panels, 2 mm, natural-coloured anodised aluminium

96703200	B FP 1413	For B 1413.., front panel thickness 1.5 mm	
----------	-----------	--	--



### Sets of screws

96300000	B SHR	D (for optional screwing of enclosures B 0808 - 2617)
96600010	B M-SHR	C (for fixing mounting panels B M 1008-2736)
96700000	B FP-SHR	A (for fixing front panels)



### Distance bolts

96756000	DIBLZ AK 30x7/IM3/56	ND = 2.4-2.6, for B....09 if a mounting plate is used
96758000	DIBLZ AK 30x5/IM3/58	ND = 2.4 - 2.6, for B....09



### Blanking plugs to determine the hinge side

96410000	B VS 3000	Flame red
96410005	B VS 7035	Light grey
96410004	B VS 7024	Graphite grey



### DIN rail acc. to DIN EN 60715 TH 15

22151101	TS 15	For EM/ET 213, EM/ET 215-217, EM/ET 227, B 1408., B 1413..
----------	-------	--



### DIN rail acc. to DIN EN 60715 G 32

22321101	TS 32	For EM/ET 213, EM/ET 215-217, EM/ET 227, B 1408., B 1413..
----------	-------	--



### DIN rail acc. to DIN EN 60715 TH 35

22351101	TS 35	For EM/ET 213, EM/ET 215-217, EM/ET 227, B 1408., B 1413..
----------	-------	--



### Pressure compensation membrane DAE

52011000	DAE-D11	Self-adhesive membrane ø 11 mm
----------	---------	--------------------------------



### Screws (SHR) and distance bolts (DIBLZ) for mounting bosses in plastic enclosures

59006217	SHR Z KA30x8	SD = 3,0 / ND = 2,4-2,6 / KD = 6,0
----------	--------------	------------------------------------