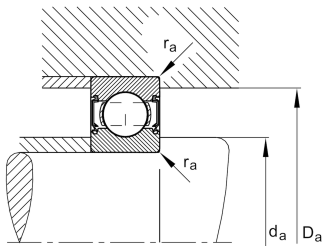
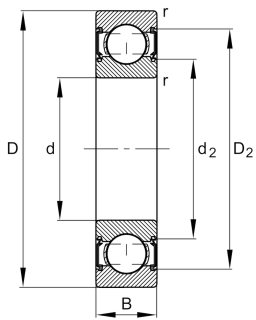


**FAG****6310-C-HRS**

Deep groove ball bearing

Deep groove ball bearing 63...-C-HRS, single row, Generation C, seal, steel sheet metal cage

## Technical information



## Your current product variant

Changed internal design	C	GenerationC
Sealing	HRS	Contact seal on one side
Cage	JN	Steel sheet metal
Tolerance class	P6	Class6 (P6), better than PN
Dimensional / heat stabilization	S0	Rings dimensional stabilized up to 150°
Lubricant	Without	Bearing not greased
Radial internal clearance	CN (Group N)	Normal internal clearance
Bore type	Z	Cylindrical

## Main Dimensions &amp; Performance Data

d	50 mm	Bore diameter
D	110 mm	Outside diameter
B	27 mm	Width
C <sub>r</sub>	68,000 N	Basic dynamic load rating, radial
C <sub>0r</sub>	38,000 N	Basic static load rating, radial
C <sub>ur</sub>	2,650 N	Fatigue load limit, radial
n <sub>G</sub>	5,800 1/min	Limiting speed
≈m	1.056 kg	Weight



Mounting dimensions

$d_{a\min}$	61 mm	Minimum diameter shaft shoulder
$D_{a\max}$	99 mm	Maximum diameter of housing shoulder
$r_{a\max}$	2 mm	Maximum fillet radius

Dimensions

$r_{\min}$	2 mm	Minimum chamfer dimension
$D_1$	92.1 mm	Shoulder diameter outer ring
$D_2$	95.22 mm	Caliber diameter outer ring
$d_1$	68.64 mm	Shoulder diameter inner ring
$d_2$	66.74 mm	Caliber diameter inner ring

Temperature range

$T_{\min}$	-30 °C	Operating temperature min.
$T_{\max}$	100 °C	Operating temperature max.

Calculation factors

$f_0$	13.1	Calculation factor
-------	------	--------------------

Characteristics

	Radial load
	Axial load in one direction
	Axial load in two directions
	Grease Lubrication
	Oil Lubrication
	Sealed on one side