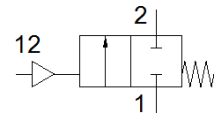


angle seat valve

VZXF-L-M22C-M-B-G112-350-M1-H3ALT-80-8

Part number: 3535825

FESTO



Data sheet

| Feature | Value |
|---|--|
| Design structure | Poppet valve with spring return |
| Type of actuation | pneumatic |
| Sealing principle | soft |
| Assembly position | Any |
| Mounting type | Line installation |
| Process valve connection | G1 1/2 |
| Nominal diameter DN | 40 |
| Nominal size | 35 mm |
| Valve function | 2/2 closed, monostable |
| Flow direction | non reversible |
| Medium pressure | 0 ... 8 bar |
| Nominal pressure of process valve | 16 |
| Exhaust-air function | not throttleable |
| Type of reset | mechanical spring |
| Type of piloting | With external control |
| Pneumatic connection | G1/8 |
| Operating pressure | 6 ... 10 bar |
| Medium | Vapour Mineral oil-based hydraulic oil Inert gases Mineral oil Water Filtered compressed air, degree of filtration 200 µm Neutral fluids |
| Operating medium | Compressed air in accordance with ISO8573-1:2010 [7:4:4] |
| Max. viscosity | 600 mm ² /s |
| Medium temperature | -40 ... 200 °C |
| Ambient temperature | -10 ... 60 °C |
| Flow rate Kv | 29.5 m ³ /h |
| Materials note | Contains PWIS substances Conforms to RoHS |
| Material housing | Gunmetal (red brass) |
| Material number for housing | CC499K |
| Material drive head | Aluminium |
| Material spindle seal | PTFE |
| Material seat seal | PTFE |
| Product weight | 2,600 g |
| CE mark (see declaration of conformity) | to EU directive pressure devices |
| Corrosion resistance classification CRC | 0 - No corrosion stress |