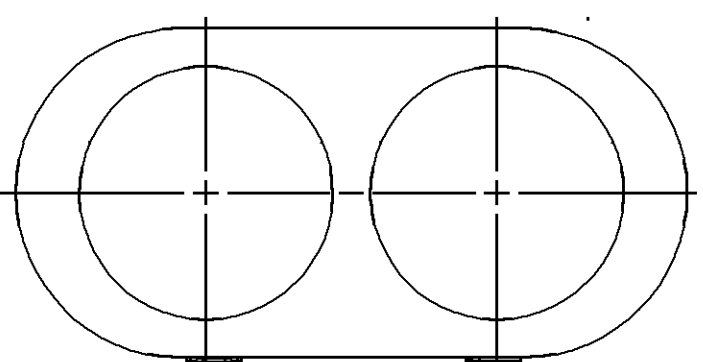
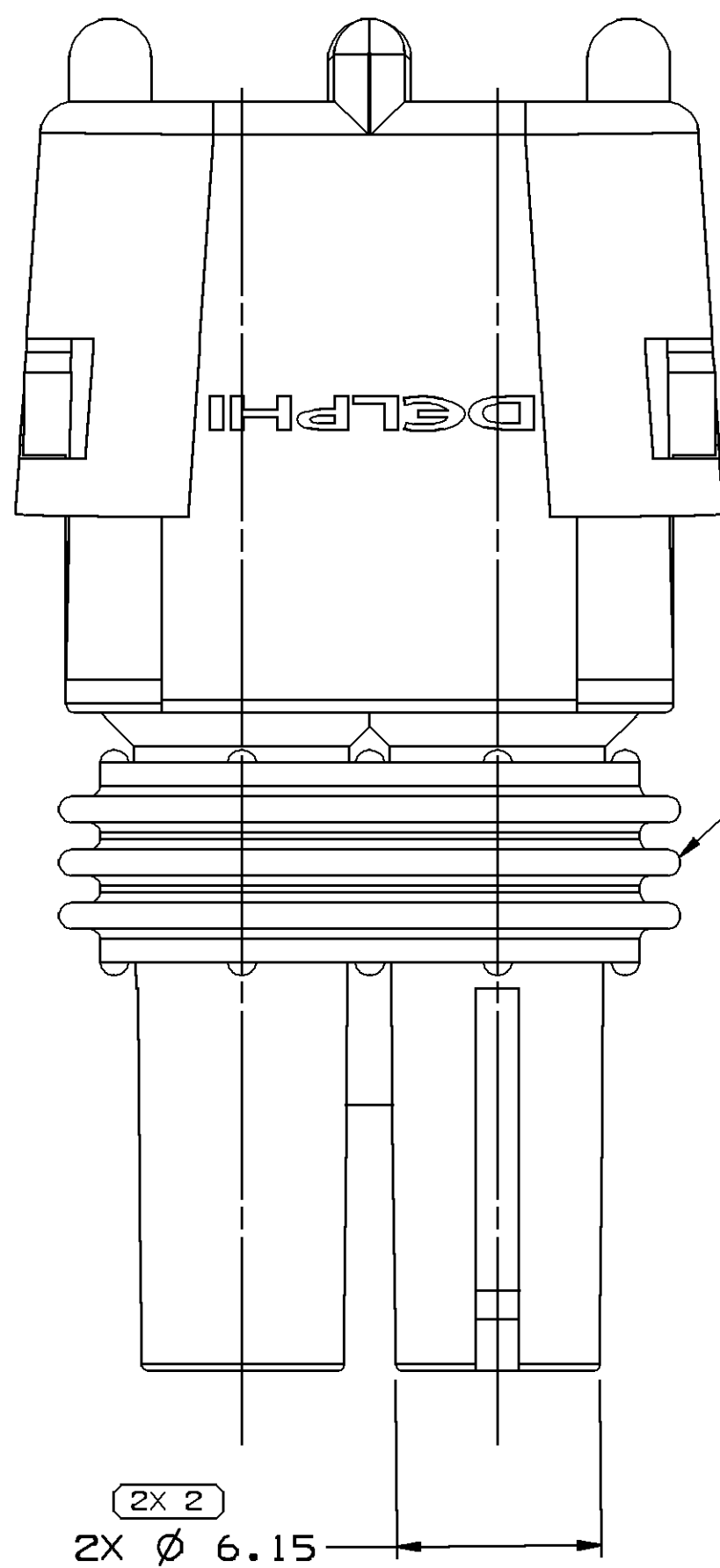
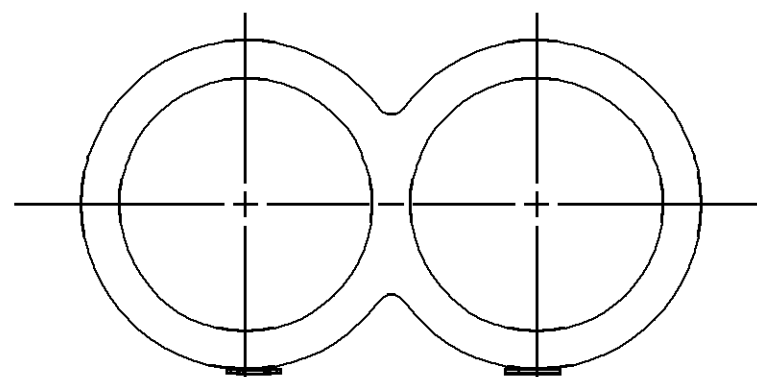


SYMBOL DEFINITION		MISSING SYMBOLS	
A DIMENSION WITHOUT AN INSPECTION REPORT SYMBOL DOES NOT REQUIRE INSPECTION. IT MAY BE CONTROLLED ON THE INDIVIDUAL COMPONENT DRAWING.		TOTAL NO OF INSPECTIONS REQUIRED	11
		LAST NO. USED	10

DWS STATUS				REVISION HISTORY		AUTH	DR	AP/D	AP/D
DATE	STG	REV	N/P	CHG	ZONE				
21N005	R	01	-	-		CLEARED REV COLUMN: ALL PARTS - REDRAWN TO PD	274555	OPS	FRG EST
08MY07	R	02	-	-		ALL PARTS - REVISED NOTE #5 & MODEL ASM UPDATED	401351	JS	JS WTM

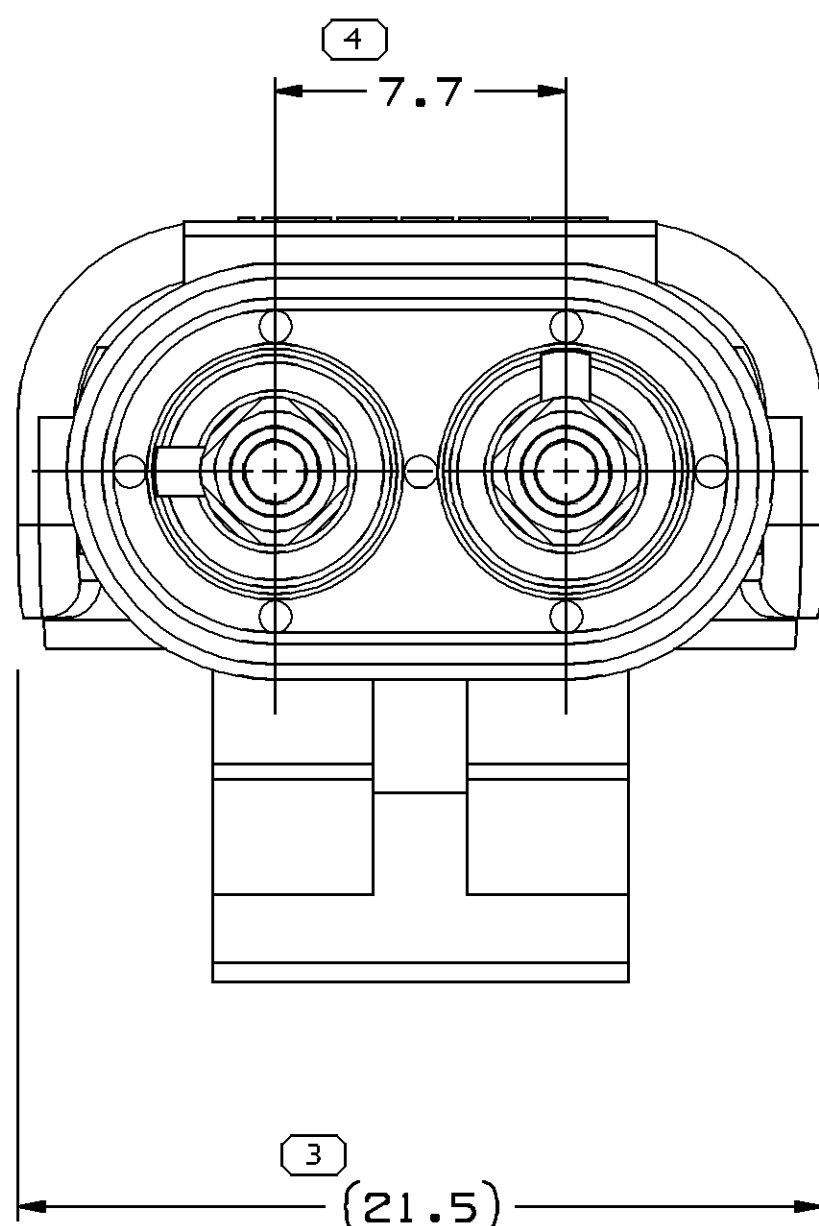
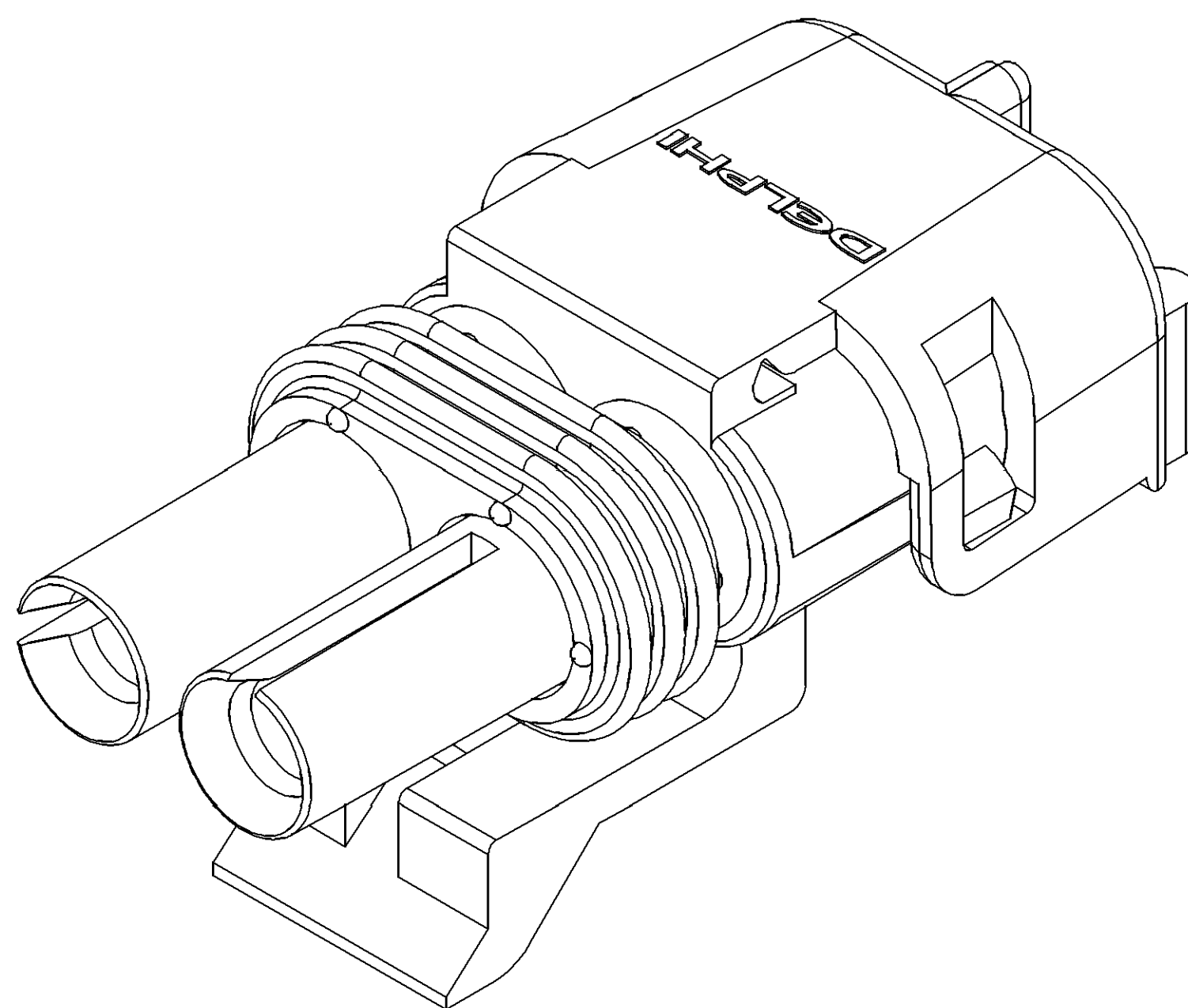


STANDARD
CONSTRUCTION

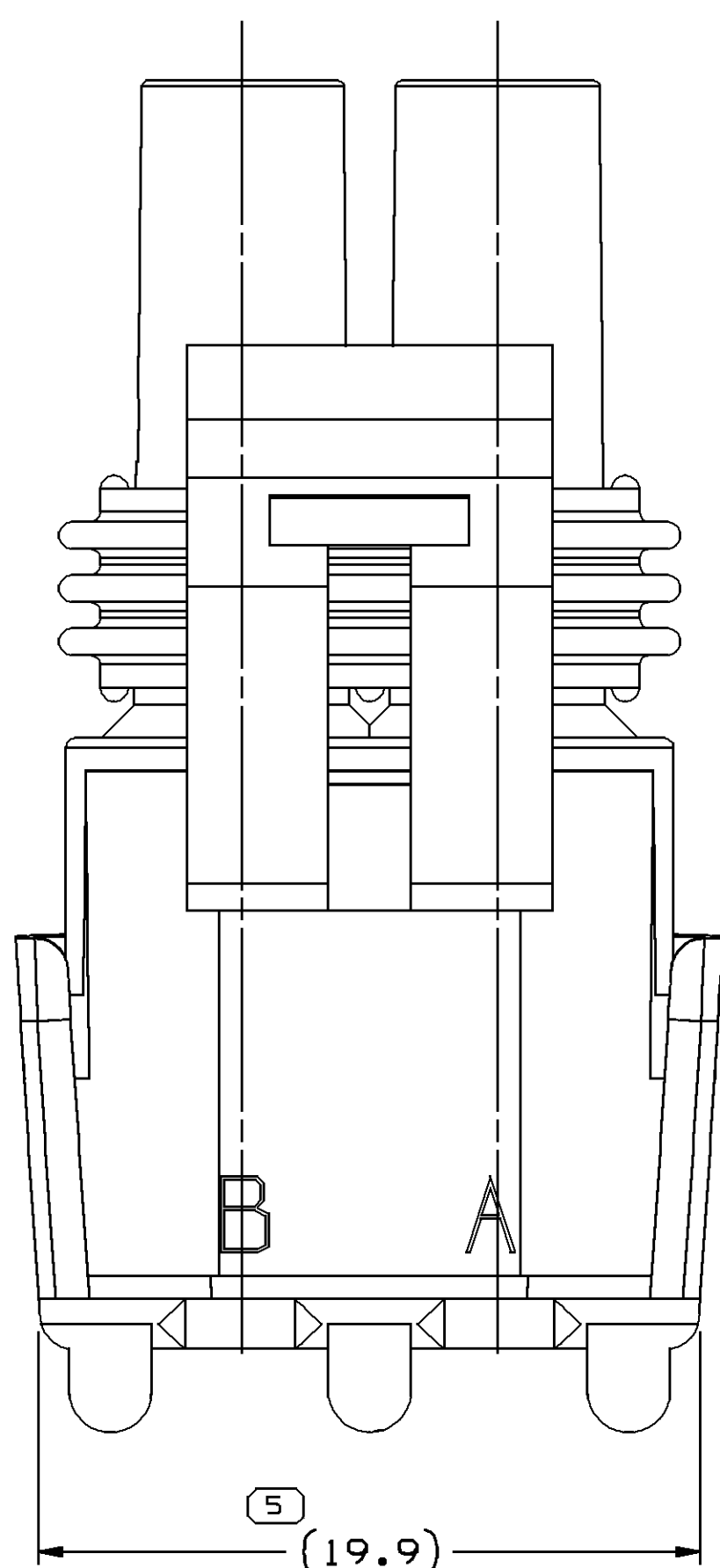
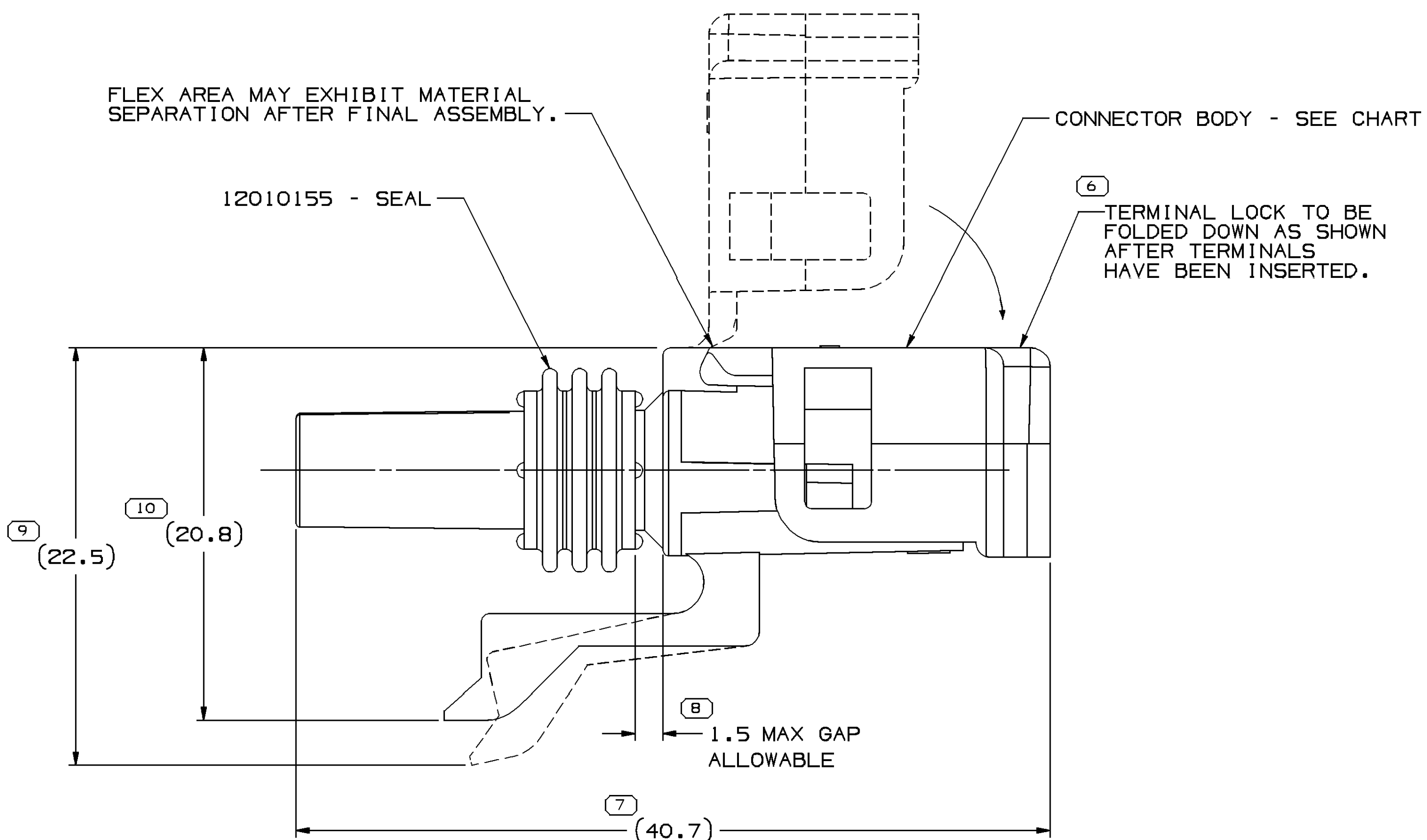


OPTIONAL
CONSTRUCTION

CABLE END VIEW OF CONNECTOR BODY



INDEX CODE
- 32 -
(ALSO SEE HANDBOOK)



NOTES

- UNLESS OTHERWISE SPECIFIED AND/OR INDICATED:
DIMENSIONS ARE TO FACE OF VIEW SHOWN AND AUTOMATICALLY ROUNDED BY COMPUTER FOR INSPECTION (SEE MATH MODEL FOR PRECISE DIMENSIONS). FOR ALL OTHER DIMENSIONS NOT SHOWN BUT REQUIRED FOR TOOL BUILD, SEE MATH MODEL FOR PRECISE TOOL PATH DATA.
- REFERENCE MATING COMPONENTS OR EQUIVALENT:
MATING CONNECTOR - SEE CHART
- THIS PART ACCEPTS THE FOLLOWING COMPONENTS OR EQUIVALENT:
FEMALE TERMINAL 12089188 FOR IN-LINE APPLICATIONS
MALE TERMINAL 12089040 FOR PANEL MOUNT APPLICATIONS
CABLE SEAL 12015323
- WHEN PARTS ARE SHIPPED THEY MUST BE PACKED IN PLASTIC BAGS OR SHIPPING CONTAINERS MUST BE LINED WITH PLASTIC LINERS. BAGS OR LINERS MUST BE SEALED TO AVOID FOREIGN MATTER.
- SEALING CODE 3 - DESIGN WILL PASS SALT FOG AND IMMERSION TEST AFTER CONDITIONING AS SPECIFIED IN ESA-644 (WEATHER-PACK). WHEN MATED TO MATING PART OR EQUIVALENT
- WHEN DESIGNING A PART TO MATE TO THIS WEATHER PACK CONNECTOR, REQUEST THE LAST COPY OF DRAWING NUMBER 12020084 FROM THE PACKARD ELECTRIC DIVISION.

12103784	A3	-	-	12103782	ASM CONN 2F W/P TWR	IN-LINE	12089188/FEMALE	12034074
12015378	A3	-	-	12010810	ASM CONN 2M W/P TWR	DEVICE	12089040/MALE	DEVICE
ASSEMBLY PART NO	REV	N/P	STATUS	CONNECTOR BODY	STANDARD DESCRIPTION	APPLICATION	REF TERMINAL/GENDER	MATING PART

DIMENSIONAL RANGE (MM)		CHART	
FROM	TO	>	<
0	20	30	100
20	30	70	150
30	70	100	150
70	100	150	200
100	150	200	250
150	200	250	300
200	250	300	400
250	300	400	
300	400		
400			
TOLERANCE UNLESS OTHERWISE SPECIFIED		ANGULAR TOLERANCE 22°	
±0.15	±0.2	±0.3	±0.4
±0.5	±0.6	±0.8	±1
±1	±1.2		

DWS TYPE		PART DRAWING	
STYLE		DISTR CODE	D
VOLUME (QTY)			
UNLESS OTHERWISE SPECIFIED		THIS DOCUMENT IS IN ACCORDANCE WITH ISO 11454-1:1994 AS ISSUED BY THE ISO STANDARDS COMMITTEE. NO TOLERANCE ADDITION SHALL BE MADE SEPARATELY REBOLDED BY DAYTON REFERENCES.	
ALL DIMENSIONS ARE IN MILLIMETERS		REFERENCE	
THIRD ANGLE PROJECTION		DO NOT SCALE	
USE MATH DATA			

DELPHI	
DELPHI PACKARD ELECTRICAL/ELECTRONIC ARCHITECTURE	
W/REN, DR	
DR	DATE
APV01 GERALD CHAPMAN	21N090
APV02 GERALD CHAPMAN	21N090
APV03 ALEX HERMANN	21N090
APV04	
APV05	
SUBSTANCES OF CONCERN AND RECYCLED CONTENT PER DELPHI 10949001	
MATERIAL SEE DRAWING	
DRAWING NAME	
TAXI ASM CONN W/P TWR SLD	
DRAWING NUMBER	
12103785	
SIZE A0	SCALE 5:1
FRAME NO 1	SHEET NO 1
STG REV N/P	1 OF 1 R 02