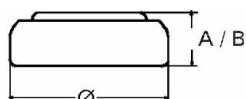


**Type Number**..... 4278  
**Designation IEC**..... LR43  
**System**..... Manganese Dioxide/  
 Zinc/KOH-Electrolyte



**Nominal Voltage**..... 1,5 V  
**Typical Capacity C**..... 120 mAh

<b>Temperature Ranges</b>	min	max.
Storage.....	-10°C	65°C
Discharge.....	-10°C	65°C

<b>Dimensions</b>	min	max.
Diameter.....	11,25	11,60
Height (A/B).....	3,80	4,20

**Weight (approx.)**..... 1,52 g

### Typical Capacities (at 20°C)

Discharge Type	Load	End Voltage:	1.2 V
Continuous 24h/d, 7d/w	10000 Ω	Time:	770 h

### No publication or circulation of data to third parties without consent of VARTA Consumer Batteries

All Data contained herein is for single cells  
 For battery applications, performance data may vary from single cell data, depending on specific battery configuration