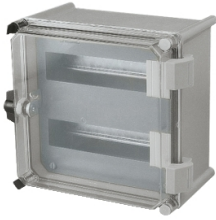


Product datasheet

Specifications



Modular distribution chassis 12modules(18mm) for PLS box 180x270mm

Local distributor code:
1916766

NSYDLS12

EAN Code: 3606480188459

Main

Range	PanelSeT
Accessory / separate part category	Mounting accessory
Application	Multi-purpose Modular distribution application
Product or component type	Chassis
Device short name	DLS
For enclosure nominal dimensions	- H: 180 mm W: 270 mm D: 180 mm
Mounting location	Front of enclosure
Range compatibility	PanelSeT PLS
Device composition	1 chassis structure 1 front panel 1 35 mm DIN rail

Complementary

Material	Front panel: self-extinguishing Chassis structure and rails: galvanised steel
Colour	Front panel: grey (RAL 7032)
Fixing mode	By fixing element - on front with supports location
Number of horizontal rows	1
Total number of 18 mm modules	12
Type of front plate	Cut-out plate
Number of cut-out	1 cut-out
Height	255 mm
Width	170 mm
Depth	90 mm

Packing Units

Unit Type of Package 1	PCE
Number of Units in Package 1	1
Package 1 Height	9.000 cm
Package 1 Width	17.000 cm
Package 1 Length	25.500 cm
Package 1 Weight	538.000 g

Unit Type of Package 2	PAL
Number of Units in Package 2	6
Package 2 Height	29.000 cm
Package 2 Width	45.000 cm
Package 2 Length	120.000 cm
Package 2 Weight	3.228 kg

Logistical informations

Country of origin ES

Contractual warranty

Warranty (in months) 18

Environmental Data

Schneider Electric aims to achieve Net Zero status by 2050 through supply chain partnerships, lower impact materials, and circularity via our ongoing "Use Better, Use Longer, Use Again" campaign to extend product lifetimes and recyclability.

[Environmental Data explained >](#)

[How we assess product sustainability >](#)

Environmental footprint

[Environmental Disclosure](#)

[Product Environmental Profile](#)

Use Better

Materials and Substances

Packaging made with recycled cardboard

No

Packaging without single use plastic

No

[EU RoHS Directive](#)

Pro-active compliance (Product out of EU RoHS legal scope)

SCIP Number

9d8b9f71-75cb-4d4a-a1a2-50559a3b422a

REACH Regulation

[REACH Declaration](#)

Use Again

Repack and remanufacture

End of life manual availability

No need of specific recycling operations

Take-back

No