

## FEATURES

- Made up of durable, hardwearing black die-cast aluminium
- Professional finish
- 130 x 53 x 26 mm dimensions
- Suitable for harsh environments
- Easy to clean and maintain
- Matte black finished plastic coated aluminium alloy
- Powder coated aluminium
- The powder coat is an epoxy resin with a carbon black pigment

## RS PRO Matte Black Aluminium Drawer Handle, 130mm

RS Stock No.:237-439



RS Professionally Approved Products bring to you professional quality parts across all product categories. Our product range has been tested by engineers and provides a comparable quality to the leading brands without paying a premium price.

## Product Description

Our own brand RS Pro black die-cast, aluminium handles provide an attractive and professional matte look. Our drawer handles are pieces of door hardware that are commonly attached to the outside of a drawer, cabinet or cupboard - this is to allow a user to easily open or pull and close the door or drawer to access the contents inside.

## General Specifications

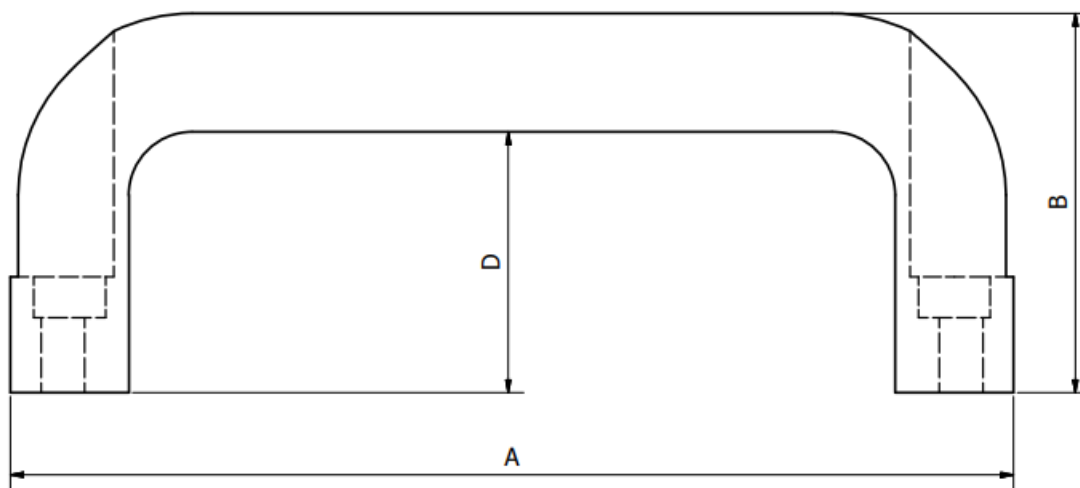
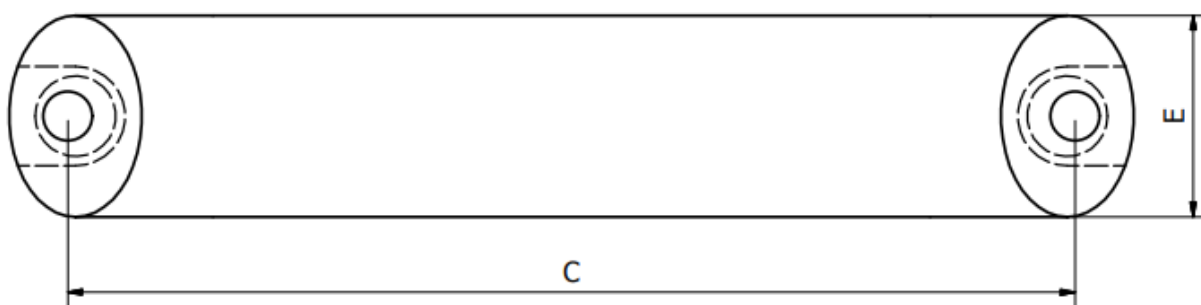
<b>Material</b>	Aluminium
<b>Finish</b>	Matte
<b>Colour</b>	Black
<b>Application</b>	Drawer handles can be used on both cabinet draws and cupboard doors

## Mechanical Specifications

<b>Length</b>	130mm
<b>Height</b>	53 mm
<b>Width</b>	26mm
<b>Fixing Centres</b>	116mm

## Approvals

<b>Compliance/Certifications</b>	2011/65/EU and 2015/863
----------------------------------	-------------------------



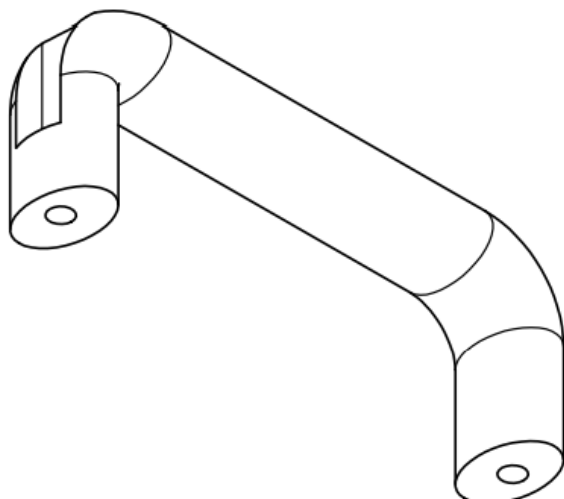


TABLE						
RS Part No	A	B	C	D	E	Bore Size
237439	130	53	116	33	26	6.4
237277	146	55	132	38	26	6.4
237306	178	57	164	38	26	6.4
237312	210	57	196	38	26	6.4