

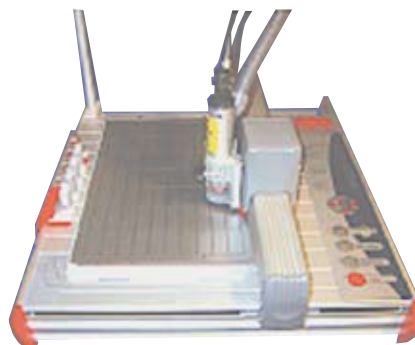
Absolute Marking System

**Fast
Facts**

AMS500 Plotter



VEC500 Engraver



The design of the AMS500 Plotter enables it to hold a variety of terminal block labels. It can plot all sizes of ABB type RB, RC, RCT, RTM and PIB (end stop) markers. It is also capable of plotting different size marker cards at the size time, as well as accommodates templates to plot various manufacturers' markers. Templates can be changed effortlessly in a matter of seconds. The ABB Absolute Marking System software is very user friendly and makes light work of labelling tasks



Weidmuller



Allen Bradley



Woertz



Phoenix Contact

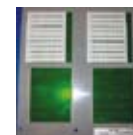


ABB Entrelec
RC/RCT

(Competitor template part numbers are available from your local Rep or Distributor)



.35mm Disposable Pen



Pen tips available in 6 tip widths

(color of the tip represents size of the tip, not color of the ink)

0.18 mm 0.25 mm 0.35 mm 0.50 mm 0.70 mm 1.00 mm

Complete plotter kit

Part number	Description
XUSP02636	Complete Plotter kit
	Kit includes:
	1 Plotter, Model AMS500
	1 Software on CD
	1 Template for 8 RC/RCT marker cards
	1 Plotter pen (.35mm)
	5 Ink cartridges
	2 Cleaning cartridges
	1 Cleaner waste bottle

Accessories

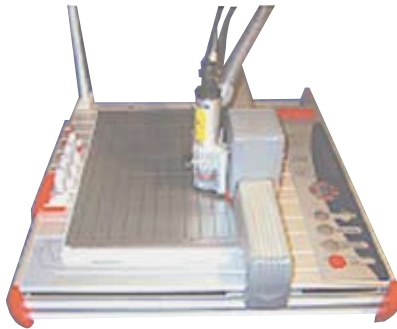
Part Number	Description
XUSP01134	Ink Cartridges (5)
XUSP02530	Plotter pen ink (30ml bottle)
XUSP01135	Cleaning cartridge (2)
XUSP02531	Plotter pen cleaning fluid (30ml bottle)
XUSP01139	Cleaner waste bottle
XUSP01551	Plotter pen (.18mm)
XUSP01132	Plotter pen (.25mm)
XUSP01133	Plotter pen (.35mm)
XUSP01552	Plotter pen (.50mm)
XUSP01548	Plotter pen (.70mm)
XUSP01549	Plotter pen (1.00mm)
XUSP02859	Disposable pen (.25mm)
XUSP02860	Disposable pen (.35mm)
XUSP02633	RC/RCT template (holds 8 cards)
XUSP01138	RTM 7/9 template
XUSP01550	RPB-12 template (PCB strips)
XUSP02629	Pads for RC/RCT template (8 per package)
XUSP02630	Pads for RTM template

CONTACT YOUR LOCAL REP OR DISTRIBUTOR FOR MORE INFORMATION

ABB

Product notes

VEC500 Engraver



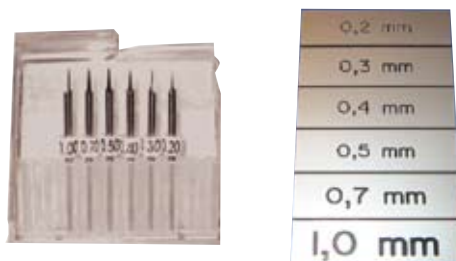
The VEC500 engraving unit was specifically designed for adapting to the AMS500 plotter and easily changes back and forth between the pen-plotter and engraver.

The main purpose for the VEC500 is the engraving of plastic signs on sheets of labels either pre-cut or blank. These legend plates are ideal for applications such as push button inlays, pilot devices, etc.

(Please contact your local sales Rep or Distributor for a list of pre-cut label part numbers and sizes).

The engraving system has a vacuum connected to the spindle which removes the waste as the pieces are cut away.

Engraving needles



Engraving needles are available in sizes of 0.2, 0.3, 0.4, 0.5, 0.7 and 1.0mm

Legend plates



Engraver kit

Part Number	Description
XUSP02964	Engraving kit (includes the following) 1 Engraving head 1 Engraving Controller 1 Vacuum 1 Engraving needle (0.5mm) 1 vacuum bag Cables – cords – hoses & hose support (with hardware)

Note: the engraving kit does NOT include the support plate.
This must be ordered separately

Accessories

Part number	Description
XUSP02965	Universal support plate (half size)
XUSP02966	Universal support plate (full size)
XUSP02967	Set of engraving needles
XUSP02968	Carrying case
XUSP02969	Vacuum bags (5)



CONTACT YOUR LOCAL REP OR DISTRIBUTOR FOR MORE INFORMATION