



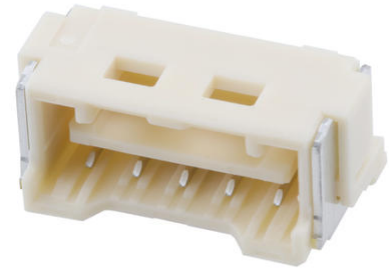
Part Number : [5024430570](#)

Product Description : 2.00mm Pitch CLIK-Mate
Wire-to-Board PCB Receptacle, Single Row, Vertical, 5
Circuits

Series Number : 502443

Status : Active

Product Category : PCB Headers and Receptacles



Documents & Resources

Drawings

[5024430570_sd.pdf](#)

3D Models and Design Files

[STEP AP242](#)

[SOLIDWORKS](#)

[Creo](#)

[Symbol and Footprint \(Multi-Format\)](#)

Specifications

[AS-502439-001-001.pdf](#)


[AS-502439-002-001.pdf](#)

[5024439200-200.pdf](#)

[5024431570-000.pdf](#)

Product Environment Compliance

Compliance

GADSL/IMDS	Compliant with Exemption 44; 34; 33
China RoHS	 per SJ/T 11365-2006
EU ELV	Not Relevant
Low-Halogen Status	Not Low-Halogen per IEC 61249-2-21
REACH SVHC	Not Contained per D(2025)4165-DC (25 June 2025)

EU RoHS	Compliant per EU 2015/863
---------	---------------------------

Compliance Statements

- EU RoHS
- REACH SVHC
- Low-Halogen

Industry Documents

- IPC 1752A Class C
- IPC 1752A Class D
- Molex Product Compliance Declaration
- IEC-62474
- chemSHERPA (xml)

Substances of Interest

- PFAS

EU RoHS Certificate of Compliance

Additional Product Compliance Information

Part Details

General

Status	Active
Category	PCB Headers and Receptacles
Series	502443
Description	2.00mm Pitch CLIK-Mate Wire-to-Board PCB Receptacle, Single Row, Vertical, 5 Circuits
Application	Signal, Wire-to-Board
Comments	See Product Specification for maximum current rating by circuit size and wire AWG
Component Type	PCB Receptacle
Product Name	CLIK-Mate
UPC	822350916899

Agency

UL	E29179
----	--------

Electrical

Current - Maximum per Contact	3.0A
-------------------------------	------

Voltage - Maximum	250V AC (RMS)/DC
-------------------	------------------

Physical

Circuits (Loaded)	5
Circuits (maximum)	5
Color - Resin	Natural
Durability (mating cycles max)	30
First Mate / Last Break	No
Glow-Wire Capable	No
Guide to Mating Part	Yes
Keying to Mating Part	Yes
Lock to Mating Part	Yes
Mated Height	10.90mm
Material - Plating Mating	Tin
Material - Plating Termination	Tin
Net Weight	711.000/mg
Number of Rows	1
Orientation	Vertical
Packaging Type	Embossed Tape on Reel
PCB Locator	No
PCB Retention	Yes
Pitch - Mating Interface	2.00mm
Plating min - Termination	1.000µm
Polarized to Mating Part	Yes
Polarized to PCB	Yes
Stackable	No
Temperature Range - Operating	-40° to +105°C
Termination Interface Style	Surface Mount

Mates With / Use With

Mates with Part(s)

Description	Part Number
2.00mm Pitch CLIK-Mate Single Row Plug Housings	<u>502439</u>

