

Add metering in existing switchboards for energy efficiency compliance

iEM4300 - Wireless energy meter on incomer

- U, I, V, P values,
- active energy, class 1 accuracy,
- up to 2000 A split current transformers,
- wireless communication,
- simple communication driver in Com'X510.

PowerTag - Wireless energy sensors on head of groups

- U, I, V, P values,
- energy partial and total values,
- wireless communication,
- simple communication driver in Com'X510.

Acti 9 Smartlink Si D - Wireless access point

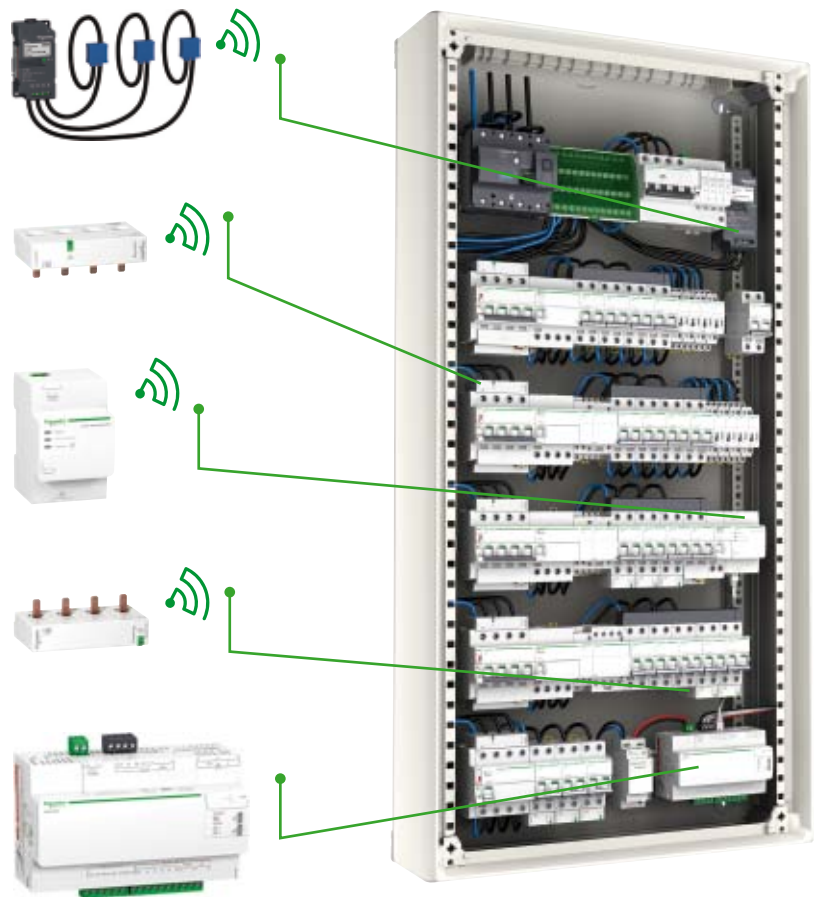
- concentrates PowerTag sensors,
- ethernet connection (Modbus TCP/IP),
- 230 V AC power supply, 54 mm wide.

PowerTag - Wireless energy sensors on outgoers

- U, I, V, P values,
- active energy partial and total values, class 1 accuracy,
- wireless communication,
- voltage loss alarm,
- simple communication driver in Com'X510.

Com'X510 - Building energy server

- plug & play configuration,
- energy dashboards for energy efficiency,
- monitoring and alarming,
- high connectivity (cloud, software, App, SMS, mail, time).



Your need

A metering solution with the smallest footprint, a low investment to match energy regulations and monitor main circuits.

Our solution

iEM4300 wireless meter for main incomer and >125 A circuit monitoring.
PowerTag wireless energy sensors for <63 A, head of group and outgoers monitoring.
Com'X510 energy server with data-logging, embedded web pages and energy dashboards.

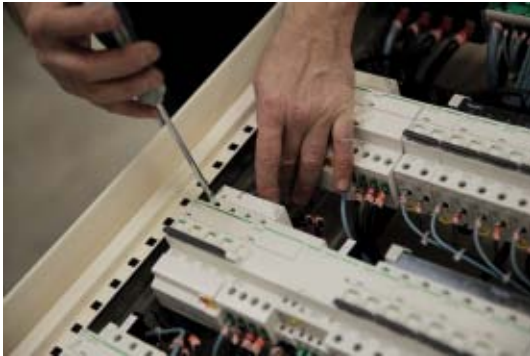
Benefits

- the right level of monitoring at the right place,
- class 1 energy measurement,
- wiring reduced to the essential,
- smallest footprint, fitting in existing panels,
- standalone system with no additional software required,
- open system compatible with your BMS/EMS.

Preferred application

- office buildings,
- hotels,
- administration,
- education,
- healthcare.

Implement your simple solution in a few steps



Installation

Main incomer meter:

- rope coil CTs are easy to install anywhere,
- wireless communication with Com'X510 simplify the wiring,

Head of groups and outgoers meters:

- PowerTag sensors can be installed with no space lost on the DIN rail,
- wireless communication with Smartlink Si D simplify the wiring.

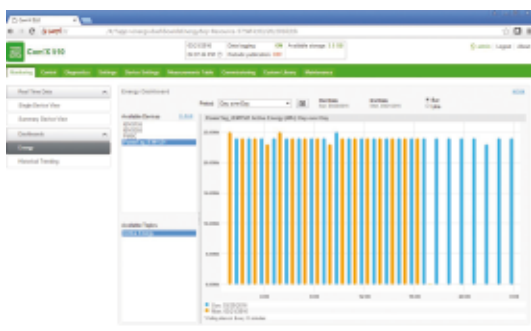
More about PowerTag

<http://www.schneider-electric.com/en/product-range-selector/61356>



Commissioning

- free commissioning software for PowerTags,
- easy to use communication test report,
- easy set up in Com'X510 with available drivers,
- Com'X510 accessible with any web browser.



Operation

- access to simple energy dashboards via a web server,
- instant values and historical data available on web pages,
- possible data export to third party systems (FTP, email...),
- class 1 accuracy to identify precisely where to save energy.

Products used

Product	Description	Cat. no.
Com'X510	Energy server with data logging and dashboards	EBX510
Acti 9 Smartlink Si D	Wireless to ethernet concentrator	A9XMTWA20
PowerTag	Energy sensor - 3/4P	A9MEM154●
PowerTag	Energy sensor - 1/2P	A9MEM152●
IEM4300 meter	Energy meter with 3 x Split CT 200 A	METSEEM4302