



11SM401-T



Actual product appearance may vary.

SM Series Subminiature Basic Switch, Single Pole Double Throw (SPDT), 250 Vac, 5 A, Pin Plunger Actuator, Solder Termination

Features

- Long operating life
- Elongated mounting hole for easier, more accurate mounting
- Choice of actuation (plunger, as well as a variety of integral and auxiliary actuators)
- Choice of electrical termination (solder, quick connect, PCB)
- Choice of operating characteristics (sensitive differential travel as low as 0,0254 mm [0.001 in] maximum, low operating force to 0,56 N [2.0 oz] maximum)
- Optional series constructions available (gold contacts for low energy switching, bifurcated gold contacts for maximum reliability, power load switching capability to 11 A)
- MIL-PFR-8805 qualified listings available

Description

MICRO SWITCH™ SM Series subminiature basic switches are used for simple or precision on/off application needs. The MICRO SWITCH™ SM Series switches are slightly larger than the MICRO SWITCH™ SX Series switches. These switches combine small size and light weight with ample electrical capacity, precision operation and long life.

Potential Applications

- Aerospace
- Instrumentation
- Appliances
- Vending machines
- Timing devices
- Office equipment
- Computer/business equipment
- Test instruments
- Medical/dental equipment
- Communications equipment
- HVAC equipment
- Manually operated devices
- Valves

Product Specifications	
Switch Type	MICRO SWITCH™ Subminiature 12,7 mm H x 6,35 mm W x 20,3 mm L [0.5 in H x 0.25 in W x 0.8 in L]
Sealed	No
Ampere Rating	5 A
Circuitry	Single Pole Double Throw (SPDT)
Actuator	Pin Plunger
Termination	Solder
Operating Temperature Range	-55 °C to 125 °C [-67 °F to 257 °F]
Voltage	250 Vac
Approvals	CE,CSA,UL,ENEC
Contact Type	Silver
Operating Force (O.F.)	0,97 N [3.5 oz] max.
Release Force (R.F.)	0,28 N [1.0 oz] min.
Pretravel (P.T.)	0,5 mm [0.020 in] max.
Overtravel (O.T.)	0,13 mm [0.005 in] min.
Differential Travel (D.T.)	0,025 mm [0.001 in] max.
Operating Position (O.P.)	8,38 mm ± 0,38 mm [0.330 in ± 0.015 in]
Housing Material	General Purpose Phenolic
High Temperature	204 °C [400 °F]
CE mark	61058-1
UL File #	E12252
CSA File #	LR41372
Agency Approvals and Standards	1054
Mounting Centers	9,65 mm [0.38 in]
Maximum Tightening Torque	0,26 N m [2.3 in lb]
Weight	2,72 g [0.006 lb]
Package Height	12,4 mm [0.49 in]
Package Width	6,35 mm [0.25 in]
Package Length	19,8 mm [0.78 in]
Recommended For	Less differential travel
Comment	Turret type solder terminals.
Availability	Global
UNSPSC Code	30211905
UNSPSC Commodity	30211905 Snap switches
Series Name	SM

MICRO SWITCH

A DIVISION OF MINNEAPOLIS-HONEYWELL REGULATOR COMPANY
MINNETONKA, MINNESOTA

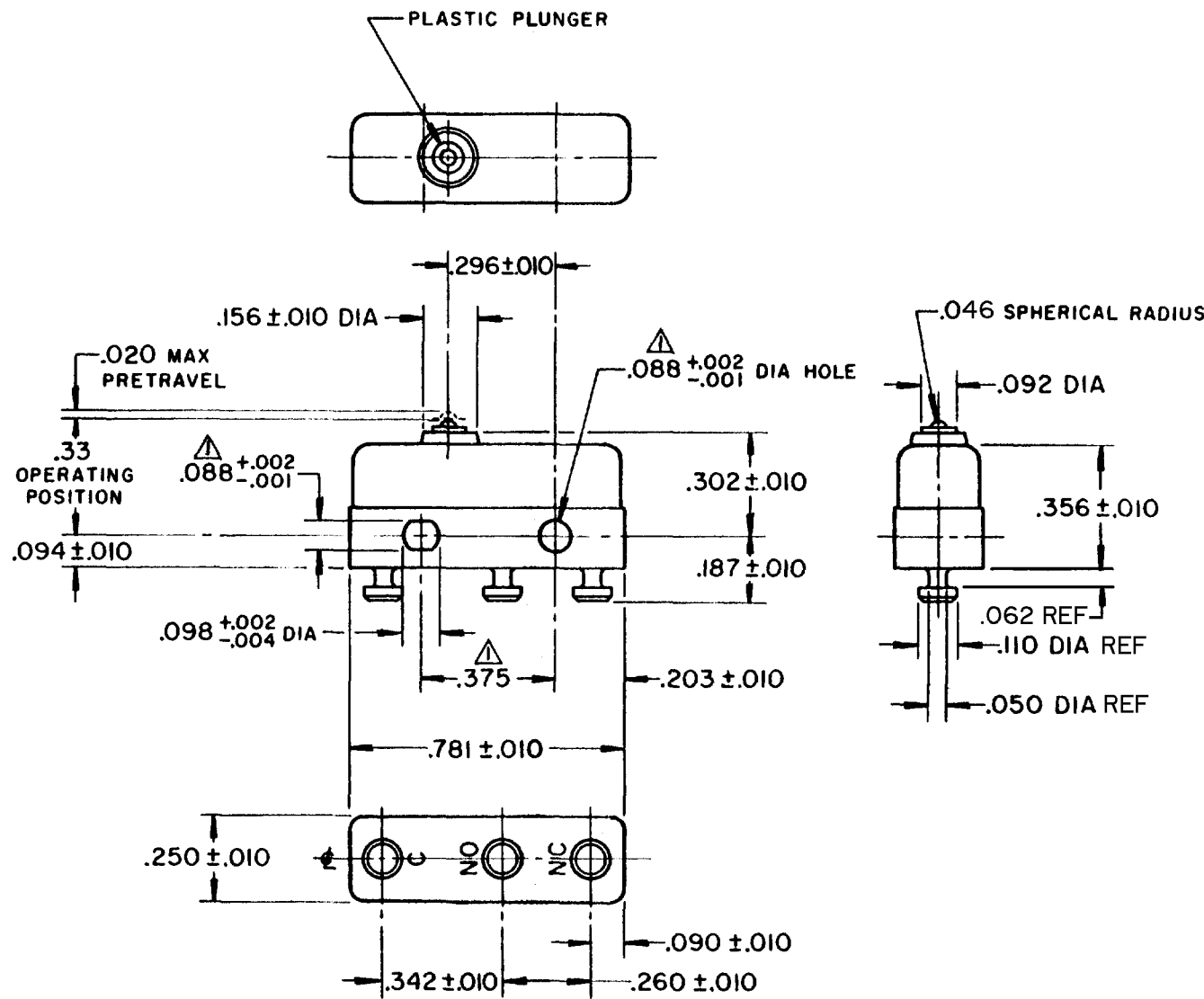
FED. MFR. CODE 91929

SWITCH - BASIC

CATALOG LISTING

11SM401-T

DRAWING NUMBER: 11SM401-T
 PAGE 1 OF 1
 RELEASE NO. SR 9889
 CHECK: 6-CH 160176
 REVISIONS:
 A C026629 SRH JAN 70
 B C029449 RER MAR 72
 C C049211 TSK MAY 81
 D C083734 JAK DEC 96
 E CO-82803-E DLT JAN 97
 F CO-95172 JJA JUNE 99
 DRAWN: FORMTEK
 RER 13 OCT 61
 CHECK: 6-CH 160176
 DRAWING NUMBER: 11SM401-T
 ISSUE: 7
 M
 REPLACES: SR 9889



NOTES

▲-MOUNTING HOLES WILL ACCEPT PINS OR SCREWS OF .087 MAX DIA ON .375 $\pm .002$ CENTERS


2-TERMINALS ARE PLATED FOR SOLDERING

3-DEAD BREAK CONDITIONS:

A-MAX AMOUNT PERMISSIBLE-- .0002 IN

THIS DRAWING COVERS A PROPRIETARY ITEM AND IS THE PROPERTY OF MICRO SWITCH, A DIVISION OF MINNEAPOLIS-HONEYWELL REGULATOR CO. THIS DRAWING IS NOT TO BE COPIED OR USED WITHOUT THE APPROVAL OF MICRO SWITCH.

CHARACTERISTICS	
OPERATING FORCE	--- 3 1/2 OZ MAX
RELEASE FORCE	----- 1 OZ MIN
DIFFERENTIAL TRAVEL	----- .001 MAX
OVERTRAVEL	----- .005 MIN

ELECTRICAL DATA	
CONTACT ARRANGEMENT	S P D T
UNDERWRITERS' LAB. INC. LISTED RATING 5A - 250 VAC -L4-	
	

SCALE 2 TO 1	
DO NOT SCALE PRINT	
UNLESS OTHERWISE SPECIFIED	
DIMENSIONS ARE IN INCHES	
TOLERANCES ARE:	
ONE PLACE (.0)	$\pm .030$
TWO PLACE (.00)	$\pm .015$
THREE PLACE (.000)	$\pm .005$
ANGLES	\pm
WEIGHT .006 LB MAX	