



Terminals & Splices > Ring Terminals & Spade Terminals



Ring & Spade Terminal Type: **Ring Tongue**

Wire Size: **202 – 810 CMA**

Stud Size: **#2, M2**

Features

Product Type Features

Shape Description	RING-049
Stud Size	#2, M2
Sealable	No
Compatible With Discrete Wire Type	Stranded
Wire Insulation Support Retention Type	Non-Insulation Support

Configuration Features

Number of Holes	1
Terminal Angle	180 °

Body Features

Inspection Slot	No
Weight per Piece	.136 g

Contact Features

Ring & Spade Terminal Type	Ring Tongue
Barrel Type	Closed
Terminal Orientation	Straight



Terminal Plating Material	Nickel
---------------------------	--------

Mechanical Attachment

Wire Insulation Support	Without
-------------------------	---------

Dimensions

Wire Size	202 – 810 CMA
Stud Diameter	2.36 mm[.093 in]
Tongue Thickness	.79 mm[.031 in]
Overall Product Length	8.36 mm[.329 in]
Barrel Inside Diameter	.89 mm[.035 in]

Usage Conditions

Insulation Requirement	Uninsulated
Operating Temperature Range	343 °C[649 °F]

Operation/Application

Compatible With Wire Base Material	Nickel
Compatible With Wire Plating Material	Nickel
Heavy Duty	No

Industry Standards

Government Qualified	No
----------------------	----

Packaging Features

Packaging Quantity	1000
Packaging Method	Loose Piece

Other

Line	Budget
------	--------

Product Compliance

[For compliance documentation, visit the product page on TE.com>](#)

EU RoHS Directive 2011/65/EU	Compliant
EU ELV Directive 2000/53/EC	Compliant
China RoHS 2 Directive MIIT Order No 32, 2016	No Restricted Materials Above Threshold
EU REACH Regulation (EC) No. 1907/2006	Current ECHA Candidate List: JAN 2022 (223) Candidate List Declared Against: JAN 2022 (223)



	Does not contain REACH SVHC
Halogen Content	Low Halogen - Br, Cl, F, I < 900 ppm per homogenous material. Also BFR/CFR/PVC Free
Solder Process Capability	Not applicable for solder process capability

Product Compliance Disclaimer

This information is provided based on reasonable inquiry of our suppliers and represents our current actual knowledge based on the information they provided. This information is subject to change. The part numbers that TE has identified as EU RoHS compliant have a maximum concentration of 0.1% by weight in homogenous materials for lead, hexavalent chromium, mercury, PBB, PBDE, DBP, BBP, DEHP, DIBP, and 0.01% for cadmium, or qualify for an exemption to these limits as defined in the Annexes of Directive 2011/65/EU (RoHS2). Finished electrical and electronic equipment products will be CE marked as required by Directive 2011/65/EU. Components may not be CE marked. Additionally, the part numbers that TE has identified as EU ELV compliant have a maximum concentration of 0.1% by weight in homogenous materials for lead, hexavalent chromium, and mercury, and 0.01% for cadmium, or qualify for an exemption to these limits as defined in the Annexes of Directive 2000/53/EC (ELV). Regarding the REACH Regulation, the information TE provides on SVHC in articles for this part number is based on the latest European Chemicals Agency (ECHA) ‘Guidance on requirements for substances in articles’ posted at this URL: <https://echa.europa.eu/guidance-documents/guidance-on-reach>

Compatible Parts



TE Part # 69363
DAHT STRATO SOLIS 26-20 ASSY

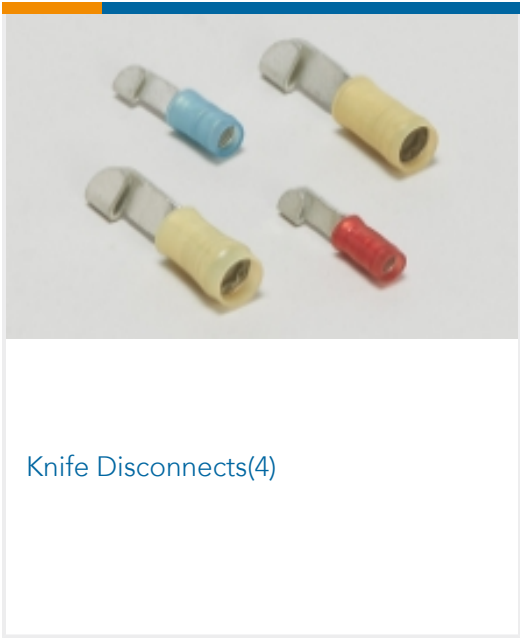


TE Part # 2217483-2
KIT, BTLI, DOUBLE ACTION HEAD

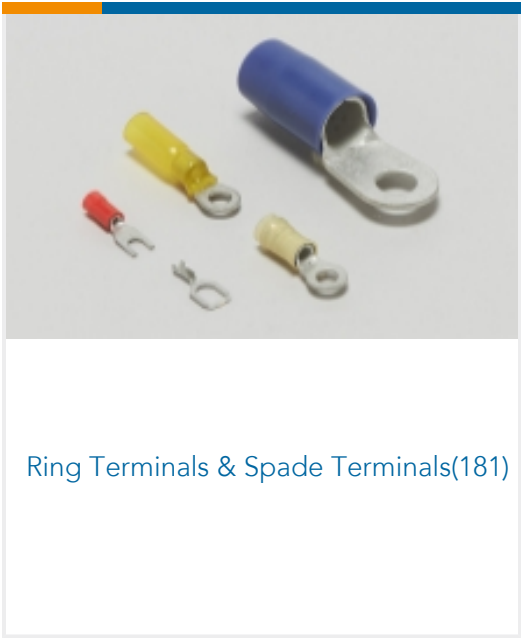


TE Part # 2217483-1
KIT, BTLI, DOUBLE ACTION HEAD


Also in the Series | SOLISTRAND Budget



Knife Disconnects(4)

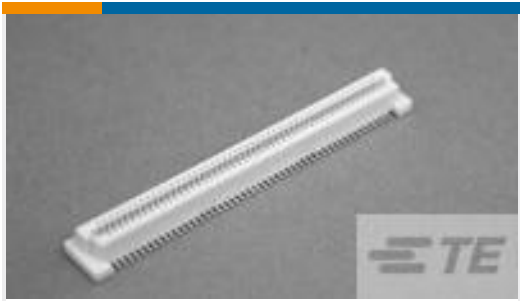


Ring Terminals & Spade Terminals(181)

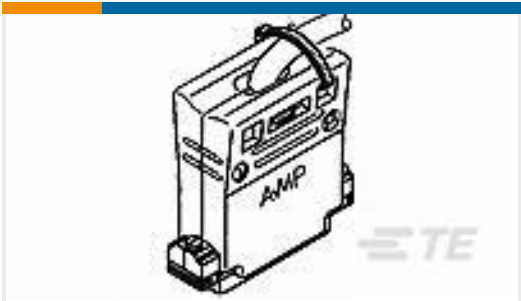


Splices(1)

Customers Also Bought



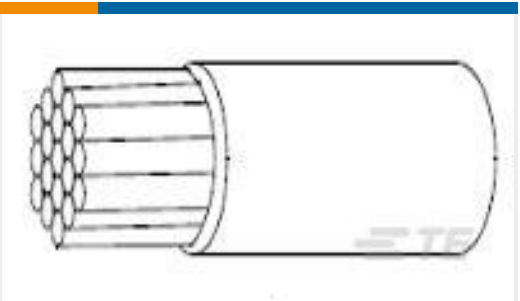
TE Part #6123000-4
0.8FH,R05H.5,100,30/Sn,TU



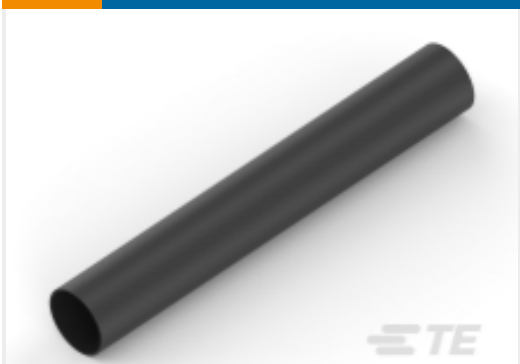
TE Part #5206471-1
CABLE CLAMP KIT,SZ 2



TE Part #502971-000
CWT-4058-W122-5/9



TE Part #216285-000
22759/32-20-2



TE Part #NB15492001
RNF-100-3/64-BK-STK



TE Part #NB19792001
RNF-100-3/32-WH-STK



TE Part #NB16622001
RW-175-3/64-X-STK



TE Part #NB16702001
RW-175-3/8-X-STK



TE Part #1052986-1
2054 1241 02

Documents

Product Drawings

TERM,BUDG R 26-22 2 NIPL

English

CAD Files

Customer View Model

ENG_CVM_CVM_2-31425-3_V.2d_dxf.zip

English

3D PDF

3D

Customer View Model

ENG_CVM_CVM_2-31425-3_V.3d_igs.zip

English

Customer View Model

ENG_CVM_CVM_2-31425-3_V.3d_stp.zip

English

By downloading the CAD file I accept and agree to the [Terms and Conditions](#) of use.

Product Environmental Compliance



Product Compliance

English

Product Compliance

English