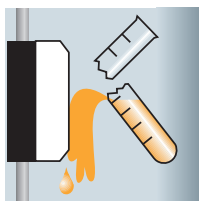




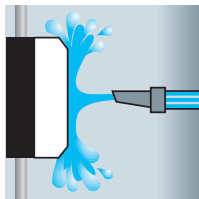
Enclosed Switch-disconnectors with pre-assembled steel EMC screen

Electromagnetic compatibility (EMC) refers to the ability of the device to function despite electromagnetic disturbances in the environment without electromagnetically disturbing other devices in the surroundings.



The operation of three-phase motors is becoming more and more common via variable speed drives or frequency inverters, and the use of such equipment can cause EMC disturbance to rise significantly.

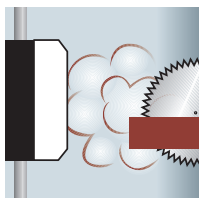
If interruption cannot be avoided, then an ideal mitigation method to maintain EMC compliance is to clamp the screened cables to a steel screening plate.



We have now enlarged our reliable CI-K offering with a range of enclosed Switch-disconnectors with pre-assembled steel screening plates for applications where EMC compliance is necessary. The new enclosed products feature units with current ratings of 20 A to 63 A, and can be used for motor applications up to 30 kW (AC-23A) for 415 V nominal current.

Features

- Well known Reliable Eaton Series switchgear
- Robust IP65 Polycarbonate compact enclosures
- Cable clamps provide robust and trouble free connection to the screening plate
- A range of cable clamps to suit all cable diameters is supplied as standard
- Various Auxiliary switch options to suit customer needs
- Red/Yellow or Black lockable handle options.



This range of enclosed switches are available as complete packages with pre-built switched N and Auxiliary contacts. The screening plate is also available separately for retrofit purposes.

Range of pre-assembled switches

Max. Amp. rating	Motor Rating AC-23A, 415 V	Description	Part no.	Article no.		
20 A	5.5 kW	3 Pol, red/yellow handle	T0-2-1/I2H/MBS/SVB	182425		
		3 Pol, black handle	T0-2-1/I2H/MBS/SVB-SW	182426		
		3 Pol + N, red/yellow handle	T0-2-8900/I2H/MBS/SVB	182427		
		3 Pol + N, black handle	T0-2-8900/I2H/MBS/SVB-SW	182428		
		3 Pol + 1 NO, red/yellow handle	T0-2-15679/I2H/MBS/SVB	182429		
		3 Pol + 1 NO, black handle	T0-2-15679/I2H/MBS/SVB-SW	182430		
		3 Pol + N + 1 NO / 1 NC, red/yellow handle	T0-3-15680/I2H/MBS/SVB	182431		
		3 Pol + N + 1 NO / 1 NC, black handle	T0-3-15680/I2H/MBS/SVB-SW	182432		
		3 Pol + 2 NO / 1 NC, red/yellow handle	T0-3-15683/I2H/MBS/SVB	182433		
		3 Pol + 2 NO / 1 NC, black handle	T0-3-15683/I2H/MBS/SVB-SW	182434		
		6 Pol + 1 NO / 1 NC, red/yellow handle	T0-4-15682/I2H/MBS/SVB	182435		
		6 Pol + 1 NO / 1 NC, black handle	T0-4-15682/I2H/MBS/SVB-SW	182436		
		25 A	11 kW	3 Pol, red/yellow handle	P1-25/I2H/MBS/SVB	182413
				3 Pol, black handle	P1-25/I2H/MBS/SVB-SW	182414
3 Pol + 1 NO / 1 NC, red/yellow handle	P1-25/I2H/MBS/SVB/Hi11			182415		
3 Pol + 1 NO / 1 NC, black handle	P1-25/I2H/MBS/SVB-SW/Hi11			182416		
32 A	15 kW	3 Pol, red/yellow handle	P1-32/I2H/MBS/SVB	182417		
		3 Pol, black handle	P1-32/I2H/MBS/SVB-SW	182418		
		3 Pol + 1 NO / 1 NC, red/yellow handle	P1-32/I2H/MBS/SVB/Hi11	182419		
		3 Pol + 1 NO / 1 NC, black handle	P1-32/I2H/MBS/SVB-SW/Hi11	182420		
63 A	30 kW	3 Pol, red/yellow handle	P3-63/I4/MBS/SVB	182421		
		3 Pol, black handle	P3-63/I4/MBS/SVB-SW	182422		
		3 Pol + 1 NO / 1 NC, red/yellow handle	P3-63/I4/MBS/SVB/Hi11	182423		
		3 Pol + 1 NO / 1 NC, black handle	P3-63/I4/MBS/SVB-SW/Hi11	182424		

Note: Switches to be used for emergency stop switching must have a red handle and yellow locking collar type SVB, (as per IEC/EN 60204/ VDE0113). Otherwise the black handle should be used (suffix „SVB-SW“).

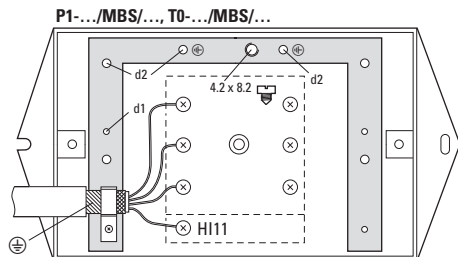
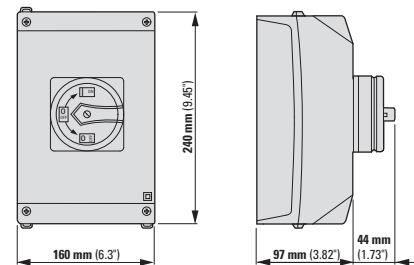
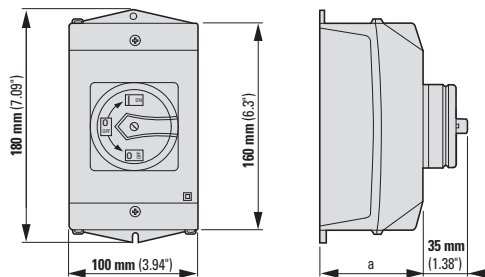
Range of accessories

Description:

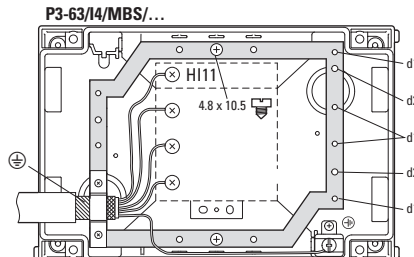
Empty enclosure with screening plate for T0-1
 Empty enclosure with screening plate for T0-2
 Empty enclosure with screening plate for T0-3, T0-4
 Empty enclosure with screening plate for T3-1, T3-2
 Empty enclosure with screening plate for T3-3, T3-4
 Metal screening plate for CI-K2
 Metal screening plate for CI-K4

Part no.	Article no.
CI-K2H-T0-1-MBS	182408
CI-K2H-T0-2-MBS	182409
CI-K2H-T0-4-MBS	182410
CI-K2H-T3-2-MBS	182411
CI-K2H-T3-4-MBS	182412
MBS-I2	290191
MBS-I4	118742

Dimensions



mm	in	mm	∅	mm	in
7	0.28	2 x 4.2 x 8.2	d1	3.5	0.14
8	0.32	2 x 4.2 x 8.2	d1	3.5	0.14
10	0.39	2 x 4.2 x 8.2	d1	3.5	0.14
12	0.47	2 x 4.8 x 10.5	d2	4.1	0.16



mm	in	mm	∅	mm	in
12	0.47	2 x 4.8 x 10.5	d2	4.1	0.16
16	0.63	2 x 4.8 x 10.5	d2	4.1	0.16
20	0.79	2 x 4.2 x 8.2	d1	3.5	0.14