



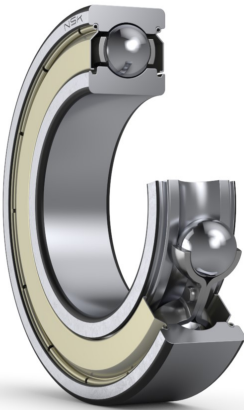
PRODUCT DATASHEET

Datasheet creation date: 2025/05/28 8:22 (UTC)



6307ZZ

Single-Row Deep Groove Ball Bearings



Boundary Dimensions

d	35	mm	Bore diameter
D	80	mm	Outside diameter
B	21	mm	Width
r (min.)	1.5	mm	Chamfer dimension

Basic Load Ratings

Cr	36500	N	Basic dynamic load rating
C0r	19200	N	Basic static load rating

Speeds

Grease	10000	min-1	Grease lubrication
--------	-------	-------	--------------------

Abutment and Fillet Dimensions

da (min.)	43	mm	Diameter of shaft abutment
da (max.)	47	mm	Diameter of shaft abutment
Da (max.)	72	mm	Diameter of housing abutment
ra (max.)	1.5	mm	Radius of shaft or housing fillet

Calculation factors

fo	13.2		Factor
----	------	--	--------

Additional information

z	8		Number of Balls
Dw	13.494	mm	Ball Diameter

Mass

Mass approx.	0.464	kg	Mass approx.
--------------	-------	----	--------------

