

Description

STAINLESS STEEL BOLT HOLE CASTOR, POLYAMIDE 125MM

Fixed

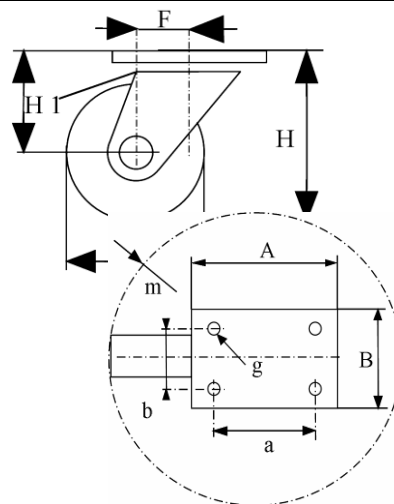
Part Number
Swivel
KP410A125-77L



Swivel and brake
KP410D125-77L



| | Fixed | Swivel | Swivel+brake |
|-------------------|----------------|---------|--------------|
| Wheel Diameter ØD | 125 mm | | |
| Overall Height H | 155 mm ±1 | | |
| Center hole | 13 mm | | |
| Offset F ±1 | \ | 39 mm | 39 mm |
| Width of Tread | 36 mm±0,5 | | |
| Hardness of tread | shore D ± 83° | | |
| Load capacity | 200 Kg | | |
| Weight | | 0,80 kg | 0,92 kg |
| Temperature | - 20 / + 80 °C | | |



Castor Assembly :

Pressed stainless steel -AISI 304-. Swivel on two rows of balls.
Central bolt hole fitting
Total lock. Metal pedal.

Wheel :

Wheel made of White Polyamide 6. Non marking.
Hub : Plain bore.

Features :

Low starting effort. High load capacity.
Lightweight, highly resistant to knocks and other impacts as well as a great many chemical substances.
Corrosion resistant, easy to clean. Specially designed for humid environments.
Suited for Food industry, Hospital or Industrial Kitchen equipment.
Non staining.
Medium duty.