



# Datasheet

ENGLISH

## ESD Bench Matting Workstation Kit

### FEATURES:

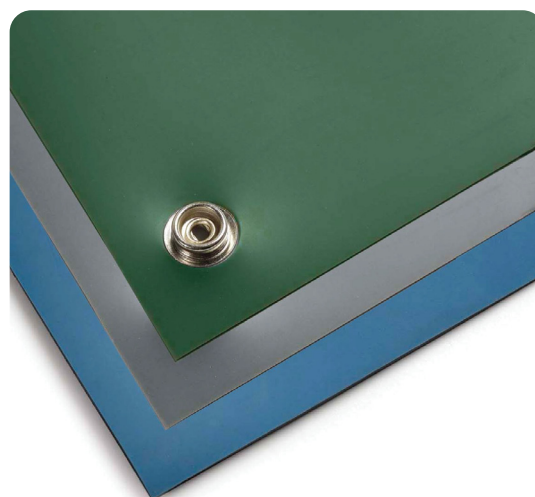
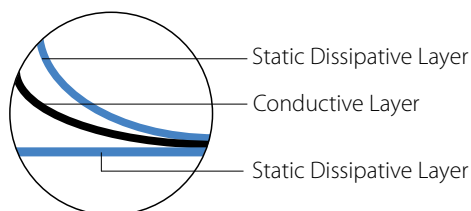
Anti-static matting should be laid out in the workshops or advanced laboratories for microelectronic industries such as electronic semi-conduct devices, electronic computers, electronic communication equipment and integrated circuits etc.

- Great value ESD Bench Matting made from anti-static (conductive) and static-dissipative materials with synthetic rubber
- All bench mats come with 10mm studs in each corner

### 3 LAYER

- 3mm thick double-layer structure
- Surface layer is a 1.25mm thick static-dissipative layer
- Middle layer is a 0.5mm conductive layer
- Bottom layer is a 1.25mm thick static-dissipative layer

### 3 LAYER CONSTRUCTION:



CONFORMS TO ESD S20.20 AND EN 61340-5-1 ESD.

### TEST RESULTS:

	TEST METHOD:	UNIT:	VALUE:
Surface Resistance / $R_{TG}$	SJ/T10694-2004	$\Omega$	$1 \times 10^6 \leq R \leq 1 \times 10^9$
Bottom Resistance / $R_{TT}$	SJ/T10694-2004	$\Omega$	$1 \times 10^3 \leq R \leq 1 \times 10^6$
Volume Resistance	GB/T14437-97	$\Omega$	$1 \times 10^5 \leq R \leq 1 \times 10^8$
Thickness	YY-1001	mm	Permissible Tolerance +0.1
Temperature Resistance	YY-1001	$^{\circ}\text{C}$	180 (Instantaneous Temp)
Temperature	N/A	$^{\circ}\text{C}$	20-26
Relative Humidity	N/A	%	40-65

$R_{TG}$  is the resistance from one point on the mat's surface to the mat's ground point, and is the fundamental electrical test for a mat. A proper  $R_{TG}$  insures that a mat can conduct charge from a point on the surface to the mat ground point. The guideline in ESD STM-4.1 for  $R_{TG}$  is  $1 \times 10^6$  to  $1 \times 10^9 \Omega$ . ANSI/ESD S-20.20 has an upper limit of  $< 1 \times 10^9 \Omega$ .  $R_{TT}$  is the resistance from one point on the mat's surface to another point. A proper  $R_{TT}$  insures the consistency of the mat's resistance properties. The ESD STM-4.1 guideline for  $R_{TT}$  is  $> 1 \times 10^6 \Omega$ .

ARTICLE:	DESCRIPTION:	SIZE:	ADDITIONAL NOTES:
7872111	Kit comprises of: Antistatic 3 Layer	1.2 x 2.4m	Each
	Antistatic 3 Layer Mat	1.2 x 0.6m	Each
	Adjustable Wrist band		Each
	Common Point Ground Lead		Each
	Coiled Cord – Stud to Stud		Each
	Coiled Cord – Stud to Banana		Each