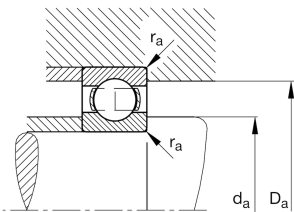
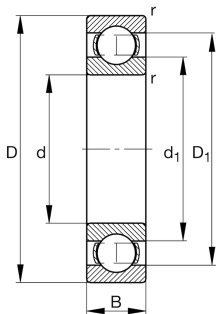


**FAG****16052**

Deep groove ball bearing

Deep groove ball bearing 160, single row,
steel sheet metal cage

Technical information



Your current product variant

Sealing	Without	Not sealed
Cage	JN	Steel sheet metal
Tolerance class	PN	Normal (PN)
Dimensional / heat stabilization	S1	Rings dimensional stabilized up to 200°
Lubricant	Without	Bearing not greased
Radial internal clearance	CN (Group N)	Normal internal clearance
Bore type	Z	Cylindrical

Main Dimensions & Performance Data

d	260 mm	Bore diameter
D	400 mm	Outside diameter
B	44 mm	Width
C_r	237,000 N	Basic dynamic load rating, radial
C_{0r}	310,000 N	Basic static load rating, radial
C_{ur}	10,200 N	Fatigue load limit, radial
n_G	2,190 1/min	Limiting speed
n_{gr}	1,960 1/min	Reference speed
$\approx m$	19.1 kg	Weight



Mounting dimensions

$d_{a\min}$	272.4 mm	Minimum diameter shaft shoulder
$D_{a\max}$	387.6 mm	Maximum diameter of housing shoulder
$r_{a\max}$	2.5 mm	Maximum fillet radius

Dimensions

r_{\min}	3 mm	Minimum chamfer dimension
D_1	351.2 mm	Shoulder diameter outer ring
d_1	310 mm	Shoulder diameter inner ring

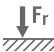
Temperature range

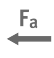
T_{\min}	-30 °C	Operating temperature min.
T_{\max}	200 °C	Operating temperature max.


Calculation factors


f_0	16.4	Calculation factor
-------	------	--------------------


Characteristics


- 

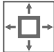
Radial load
- 

Axial load in one direction
- 

Axial load in two directions
- 

Grease Lubrication
- 

Oil Lubrication
- 

Not sealed
- 

Large bearing