

6

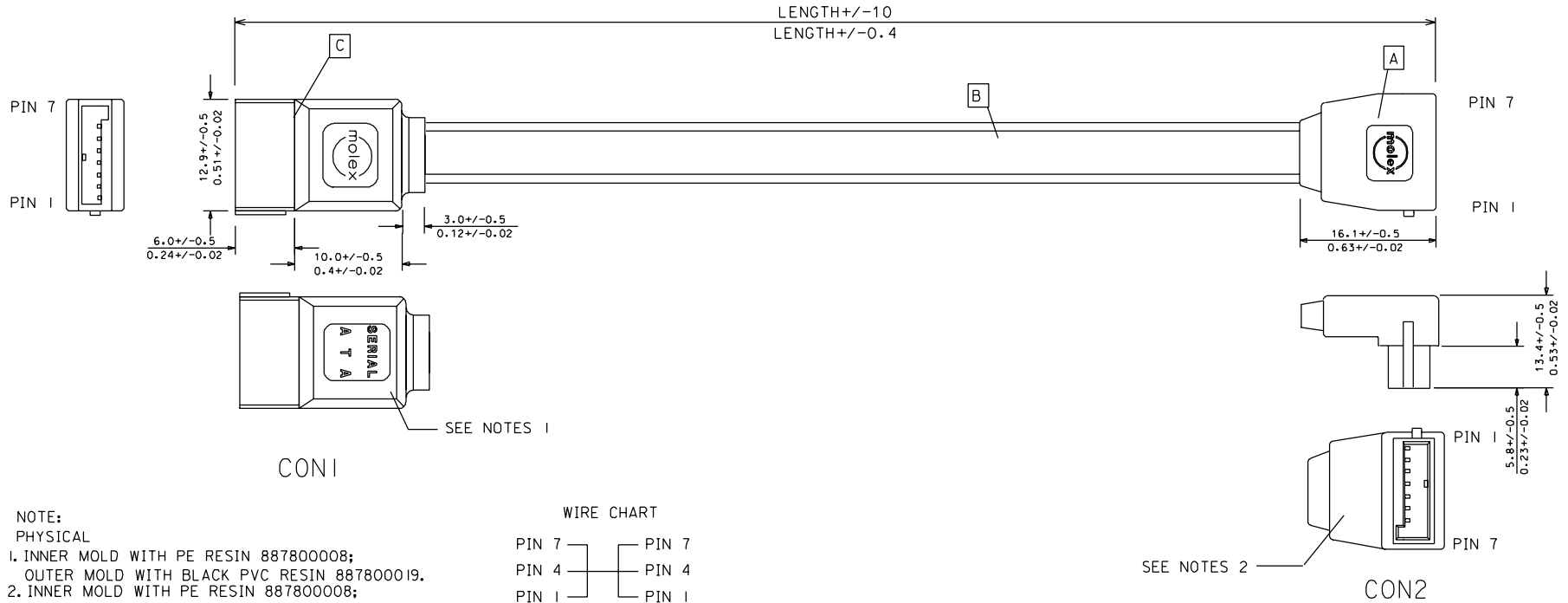
5

4

3

2

1



NOTE:  
 PHYSICAL  
 1. INNER MOLD WITH PE RESIN 887800008;  
 OUTER MOLD WITH BLACK PVC RESIN 887800019.  
 2. INNER MOLD WITH PE RESIN 887800008;  
 OUTER MOLD WITH BLACK PVC RESIN 887800042.  
 ELECTRICAL PERFORMANCE:  
 3. DIELECTRONIC STRENGTH: 500V DC  
 4. INSULATION RESISTANCE: 100M OHMS Min.  
 5. CONDUCTIVE RESISTOR: 2 OHMS Max.

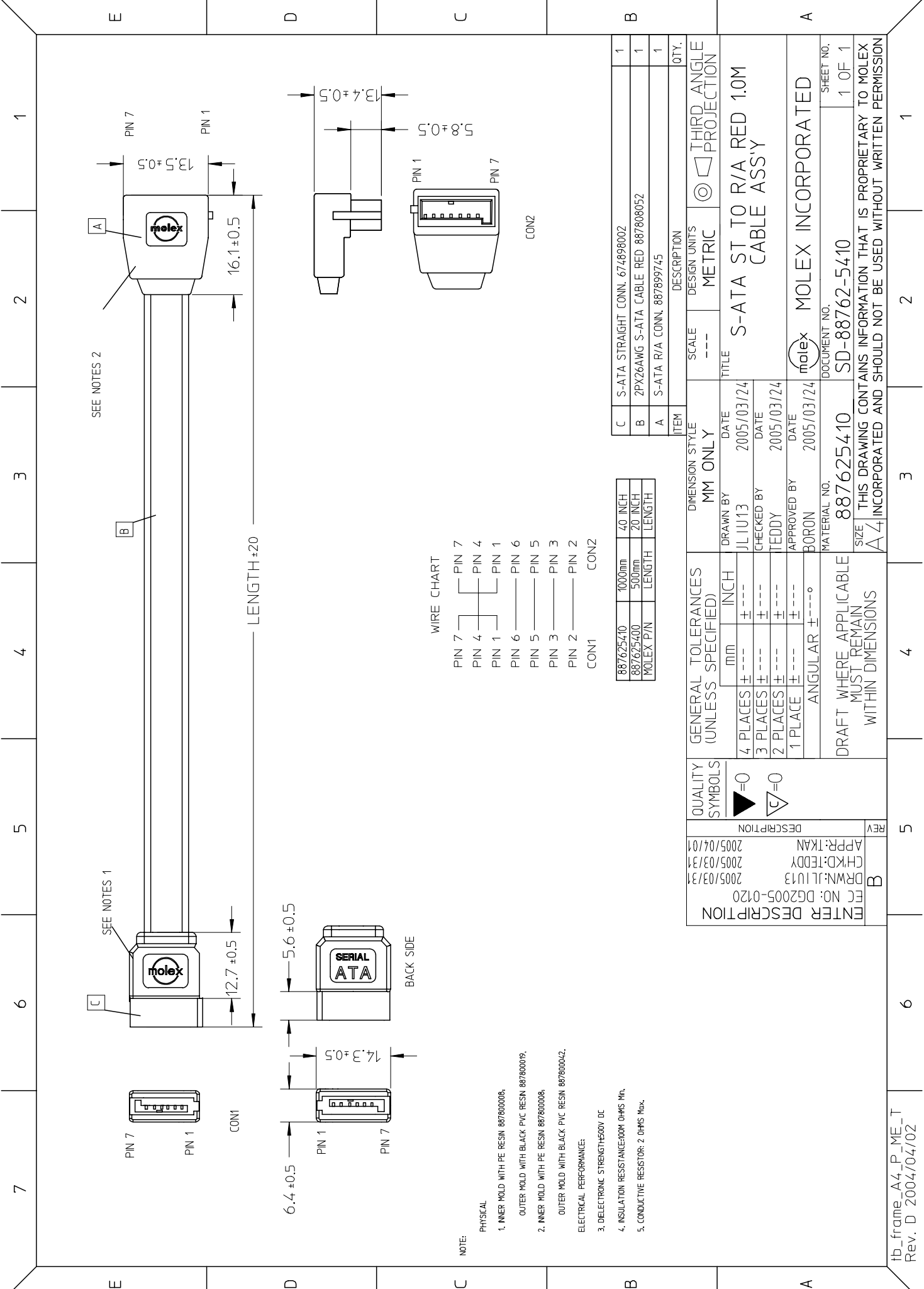
WIRE CHART

PIN 7	—	PIN 7
PIN 4	—	PIN 4
PIN 1	—	PIN 1
PIN 6	—	PIN 6
PIN 5	—	PIN 5
PIN 3	—	PIN 3
PIN 2	—	PIN 2
CON1		CON2

887625410	1000mm	40 INCH
887625400	500mm	20 INCH
MOLEX P/N	LENGTH	LENGTH

C	S-ATA STRAIGHT CONN. 675380001		I
B	2PX26AWG S-ATA CABLE RED 887808052	N/A	I
A	S-ATA R/A CONN. 887899745		I
ITEM	DESCRIPTION	L	QTY.

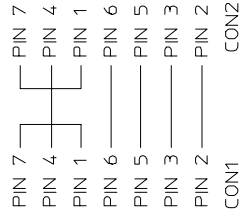
EC NO. DRAWN: Louis 04/02/17 CHK: APPR:	DESCRIPTION	QUALITY SYMBOLS	GENERAL TOLERANCES: (UNLESS SPECIFIED)	SCALE N.T.S	DESIGN UNITS <input checked="" type="checkbox"/> mm <input type="checkbox"/> INCH	THIRD ANGLE PROJECTION	DIMENSIONS: <input checked="" type="checkbox"/> mm <input type="checkbox"/> INCH <input type="checkbox"/> mm <input type="checkbox"/> ONLY	SHT	REV
		MAJOR ▼ = 0 CRITICAL ▽ = 0	4 PLACES ±0. ±. 3 PLACES ±0. ±. 2 PLACES ±0. ±. 1 PLACE ±0. ±.	mm INCH	DRAWN BY & DATE Louis Chen 03/11/24	TITLE: S-ATA STRAIGHT TO RIGHT ANGEL SIGNAL RED CABLE, 0.5M, IM			
A	REV		ANGULAR: ± °	CAD FILENAME J6254-XX .DGN	MATERIAL NO. 8876254XX	DRAWING NO. SD-88755-009	SHEET NO. 1 OF 1		SIZE A4



SEE NOTES 2

SEE NOTES 1

WIRE CHART



NOTE:

- PHYSICAL
- 1. INNER MOLD WITH PE RESIN 887800008,
- OUTER MOLD WITH BLACK PVC RESIN 887800019.
- 2. INNER MOLD WITH PE RESIN 887800008,
- OUTER MOLD WITH BLACK PVC RESIN 887800042.
- ELECTRICAL PERFORMANCE:
- 3. DIELECTRIC STRENGTH<math>E\_{500V}</math> DC
- 4. INSULATION RESISTANCE<math>100M</math> OHMS MIN.
- 5. CONDUCTIVE RESISTOR: 2 OHMS Max.

887625410	1000mm	40 INCH
887625400	500mm	20 INCH
MOLEX P/N	LENGTH	LENGTH

C	S-ATA STRAIGHT CONN. 674898002	1
B	2PX26AWG S-ATA CABLE RED 887808052	1
A	S-ATA R/A CONN. 887899745	1

QUALITY SYMBOLS		REVISION	
4 PLACES ±	INCH	APPR:TKAN	2005/04/01
3 PLACES ±	MM	CHKD:TEDDY	2005/03/31
2 PLACES ±	MM	DRWN:JLIU13	2005/03/31
1 PLACE ±	MM	FCC NO: DG2005-0120	ENTER DESCRIPTION
ANGULAR ±		REV	
DRAFT WHERE APPLICABLE MUST REMAIN WITHIN DIMENSIONS		DESCRIP TION	
GENERAL TOLERANCES (UNLESS SPECIFIED)		MATERIAL NO.	
4 PLACES ±		887625410	
3 PLACES ±		SD-88762-5410	
2 PLACES ±		DOCUMENT NO.	
1 PLACE ±		MOLEX INCORPORATED	
ANGULAR ±		SHEET NO.	
DRAFT WHERE APPLICABLE MUST REMAIN WITHIN DIMENSIONS		1 OF 1	
DRAFT WHERE APPLICABLE MUST REMAIN WITHIN DIMENSIONS		THIS DRAWING CONTAINS INFORMATION THAT IS PROPRIETARY TO MOLEX INCORPORATED AND SHOULD NOT BE USED WITHOUT WRITTEN PERMISSION	

ITEM	SCALE	DESCRIPTION	QTY.
C	---	S-ATA STRAIGHT CONN.	1
B	---	2PX26AWG S-ATA CABLE RED	1
A	---	S-ATA R/A CONN.	1
DIMENSION STYLE		THIRD ANGLE PROJECTION	
MM ONLY			
DATE	DATE	TITLE	
2005/03/24	2005/03/24	S-ATA ST TO R/A RED 1.0M CABLE ASSY	
DATE	DATE		
2005/03/24	2005/03/24		
DATE	DATE		
2005/03/24	2005/03/24		