

FEATURES

- Nylon Polyamide 6
- Zinc plated steel studs and alloy female threads
- Matte black finish
- Melting point of +215°C
- Tolerant of weak acids, with excellent resistance to chlorinated hydrocarbons
- Working temperature range of -30°C to +85°C

RS PRO Black Wing Clamping Knob, M10

RS Stock No.: 169-373



RS Professionally Approved Products bring to you professional quality parts across all product categories. Our product range has been tested by engineers and provides a comparable quality to the leading brands without paying a premium price.

Product Description

Knobs are used in a wide variety of applications in our day-to-day lives and perform many functions, from being used as fixed handles to being used to tighten, loosen, adjust and push other components or pieces of equipment. They are used in various applications, from industrial and construction machinery to audio and visual equipment.

Female knobs: M5 (RS [161436](#)), M6 (RS [161458](#)), M8 (RS [161470](#)), M10 (RS [161486](#)).

Male knobs: M5 (RS [169266](#)), M6 (RS [169272](#)), M6 (RS [169288](#)), M8 (RS [169294](#)), M6 (RS [169301](#)), M8 (RS [169317](#)), M8 (RS [169323](#)), M10 (RS [169339](#)).

Through-threaded knobs: M6 (RS [169345](#)), M8 (RS [169367](#)), M10 (RS [169373](#)).

General Specifications

Thread	M10
Knob Shape	Wing
Mounting Type	Threaded Through Hole
Body Material	High impact resistant thermoplastic
Insert Material	Brass
Colour	Black
Finish	Matt
Application	Adjustable tripods, Audio and visual equipment, Adjustable/temporary furniture

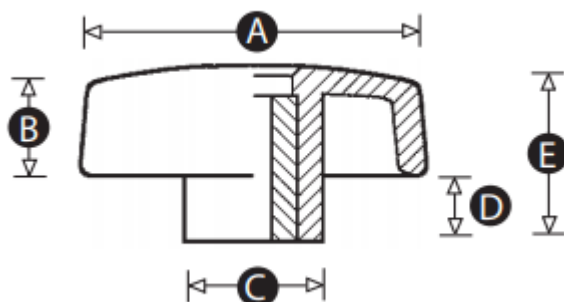
Mechanical Specifications

Thread Diameter	10mm
Thread Length	15mm
Knob Diameter	60mm
Hole Diameter	19mm
Hole Length	30mm

Approvals

Compliance/Certifications

EN 61340



Part No.	A	B	C	D	E	Thread size
169345	40	12	15	8	20	M6
169367	50	15	15	9	24	M8
169373	60	18	19	12	30	M10