

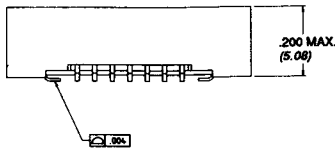
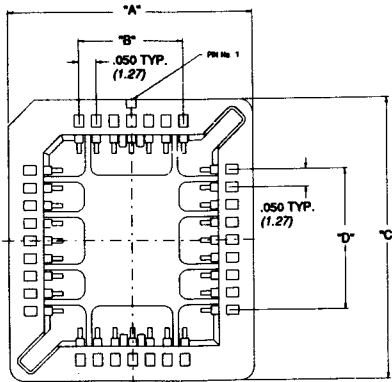
PLCC — 20 XX TP — SMT L — TT

Number of Contacts:
20, 28, 32, 44,
52, 68, 84

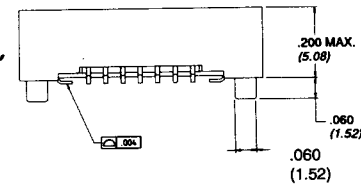
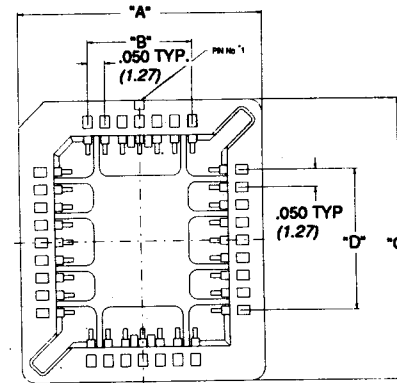
Blank = Standard Product
(without standoff)
LP = Optional Standoff
(32 position only)=

Plating Code: Specify TT
L = with Location Posts
Blank = without Location Posts
Packaging
TP = Tape and Reel (Not available with location posts)
Blank = Tube Pack

**PLCC-XX-SMT-TT
Without Location Post**



**PLCC-XX-SMTL-TT
With Location Post**



No. of Contacts	"A"	"B"	"C"	"D"
20	0.600 (15.24)	0.200 (5.08)	0.600 (15.24)	0.200 (5.08)
28	0.700 (17.78)	0.300 (7.62)	0.700 (17.78)	0.300 (7.62)
32	0.700 (17.78)	0.300 (7.62)	0.800 (20.32)	0.400 (10.16)
44	0.900 (22.86)	0.500 (12.70)	0.900 (22.86)	0.500 (12.70)
52	1.000 (25.40)	0.600 (15.24)	1.000 (25.40)	0.600 (15.24)
68	1.200 (30.48)	0.800 (20.32)	1.200 (30.48)	0.800 (20.32)
84	1.400 (35.56)	1.000 (25.40)	1.400 (35.56)	1.000 (25.40)

**Robinson
Nugent**

812/945-0211
812/945-0805 FAX

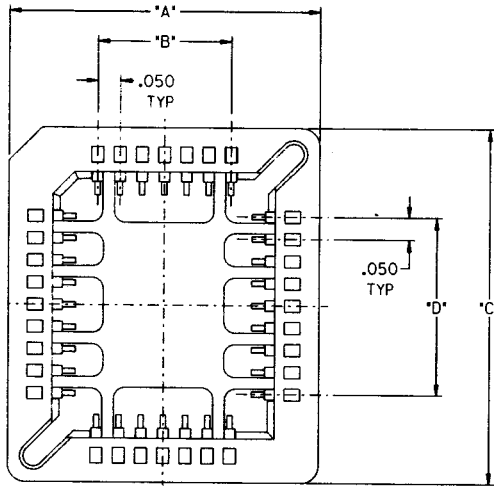
PLCC-XXXXXX-SMTL-TT 1 of 4

Plastic Leaded Chip Carrier Socket with
Optional Standoffs and Locator Posts

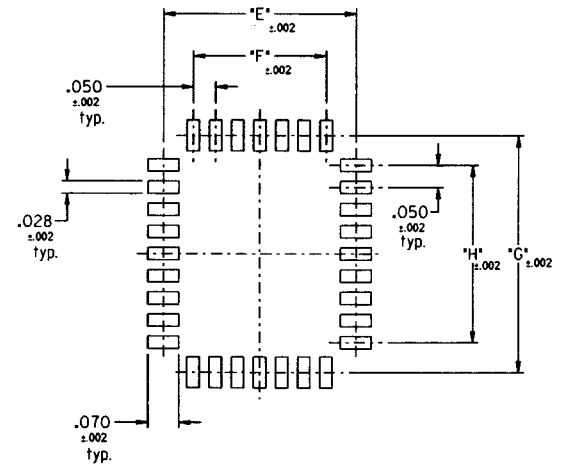
PLCC — XX TLP TP — SM — TT

Number of Contacts: _____
32, 44

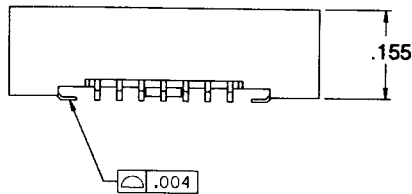
Packaging
TP = Tape and Reel (Not available with location posts)
Blank = Tube Pack



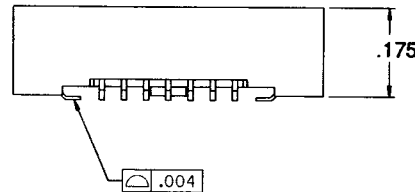
Recommended Mounting Pattern



PLCC-32TLPTP-SM-TT



PLCC-44TLPTP-SM-TT



Dimensional Specifications

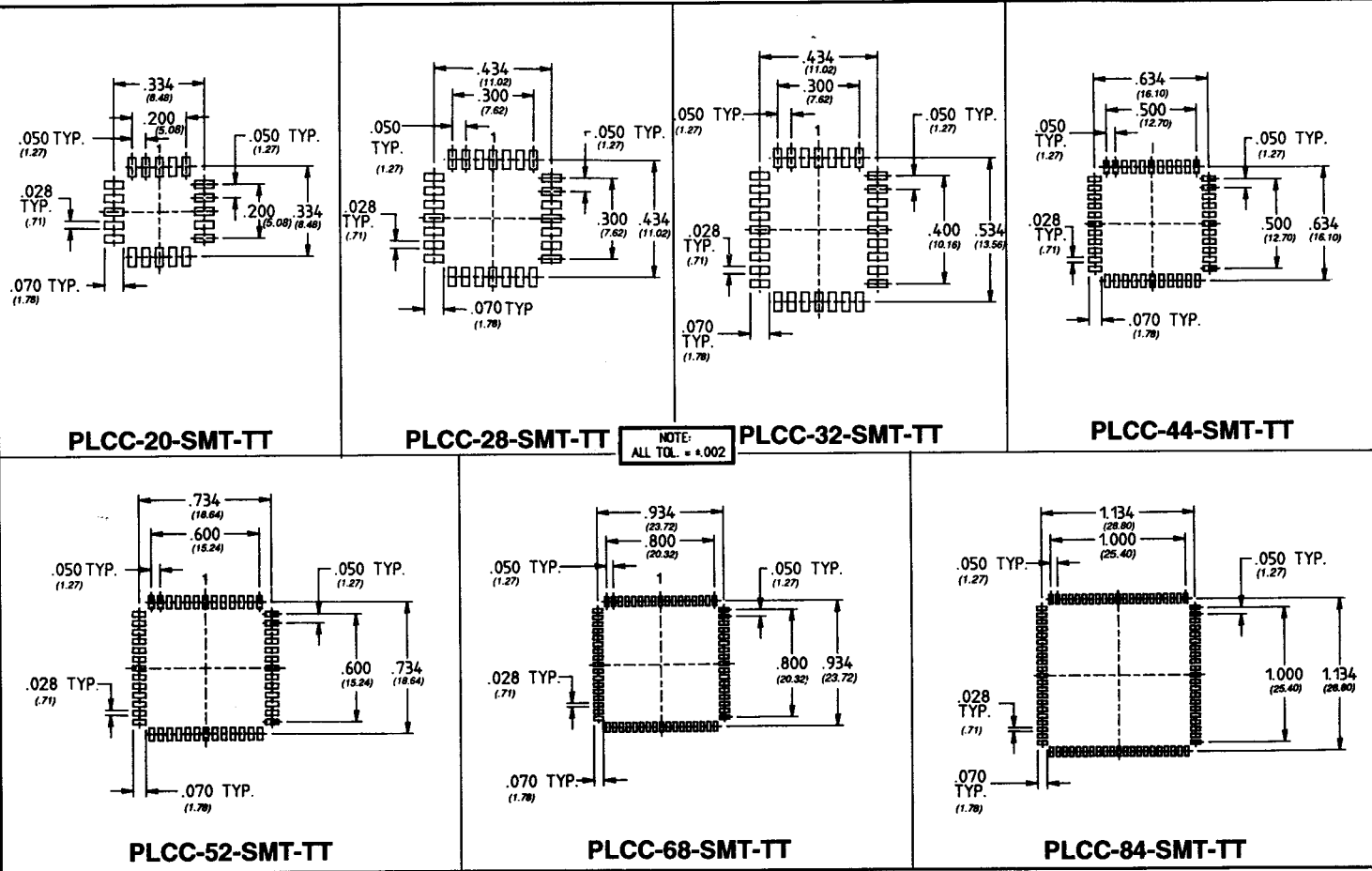
No. of Contacts	"A"	"B"	"C"	"D"	"E"	"F"	"G"	"H"
32	0.700 (17.78)	0.300 (7.62)	0.800 (20.32)	0.400 (10.16)	0.434 (11.02)	0.300 (7.62)	0.534 (13.56)	0.400 (10.16)
44	0.900 (22.62)	0.500 (12.70)	0.900 (22.62)	0.500 (12.70)	0.634 (16.10)	0.500 (12.70)	0.634 (16.10)	0.500 (12.70)

**Robinson
Nugent**

812/945-0211
812/945-0805 FAX

PLCC-XXTLPTP-SM-TT 2 of 4
Plastic Leaded Chip Carrier Socket with
Ultra Low Profile

PLCC-XX-SMT-TT Recommended Mounting Pattern

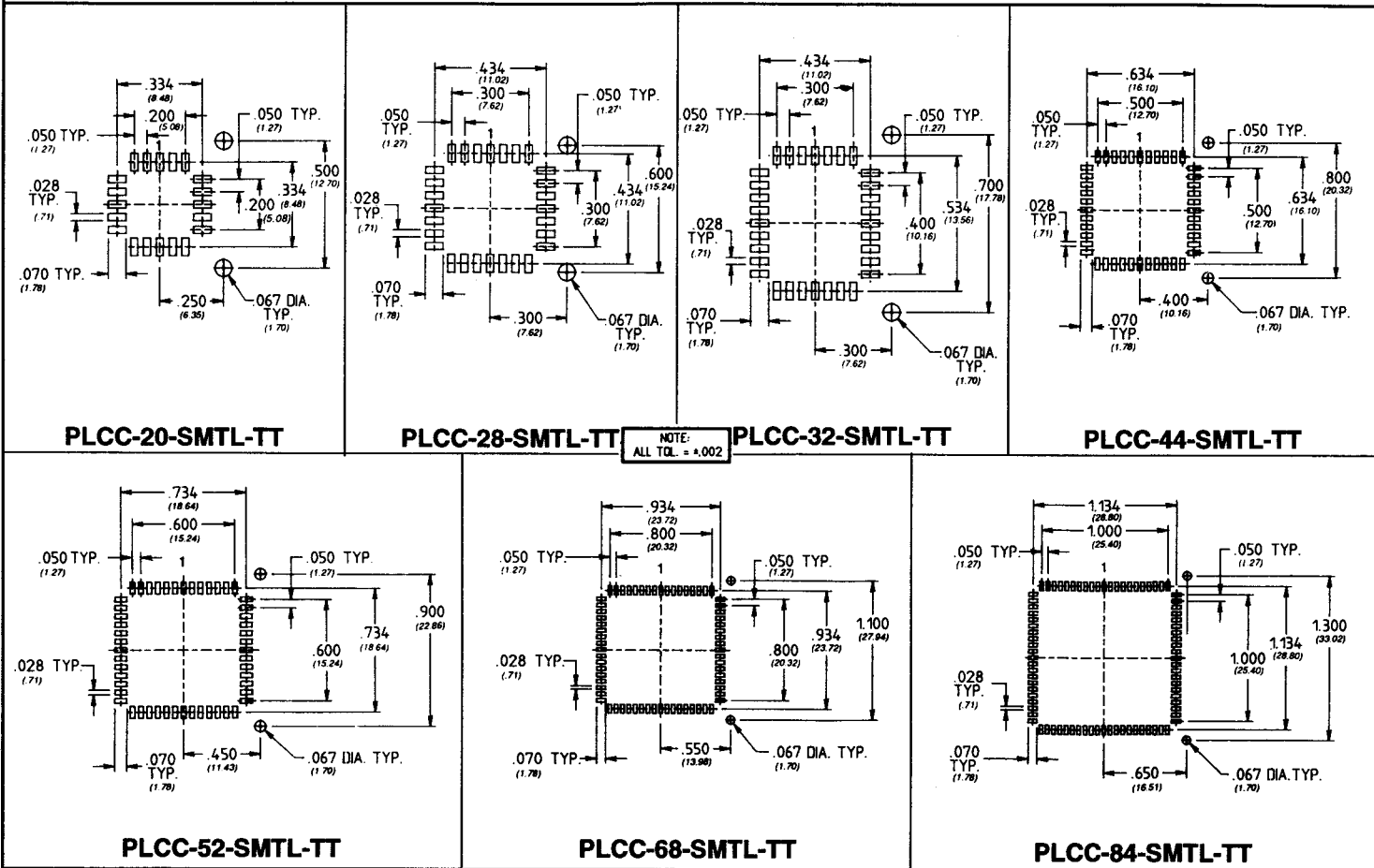


**Robinson
Nugent**

812/945-0211
812/945-0805 FAX

PLCC-XXXXXX-SMTX-TT 3 of 4
Without Optional Locator Posts

PLCC-XX-SMTL-TT Recommended Mounting Pattern



**Robinson
Nugent** 812/945-0211
812/945-0805 FAX

PLCC-XXXXXX-SMTL 4 of 4
With Optional Locator Posts

PLCC Socket for Non-Volatile RAMs and Real Time Clocks

PLCC — XX TP — SMT L — TT

Number of Contacts:
26, 34

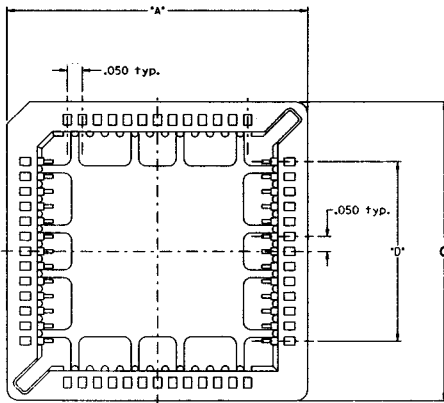
L = with Location Posts
Blank = without Location Posts

Packaging

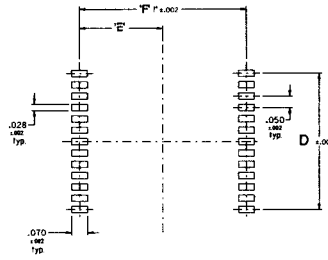
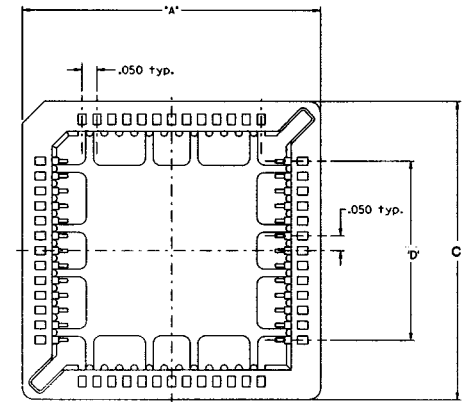
TP = Tape and Reel (Not available with location posts)

Blank = Tube Pack

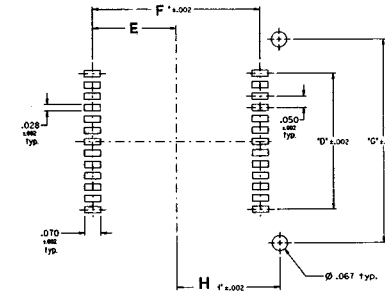
PLCC-XX-SMT-TT Without Location Post



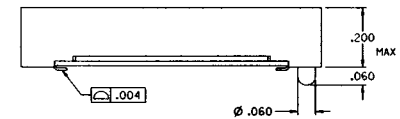
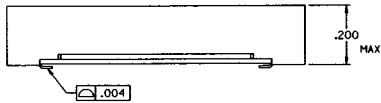
PLCC-XX-SMTL-TT With Location Post



PLCC-26-SMT-TT
Recommended Mounting Pattern



PLCC-26-SMTL-TT
Recommended Mounting Pattern



No. of Contacts	"A"	"C"	"D"	"E"	"F"	"G"	"H"
26	1.000 (25.40)	1.000 (25.40)	0.600 (15.24)	0.367 (9.32)	0.734 (18.67)	0.900 (22.86)	0.450 (11.43)
34	1.200 (30.48)	1.200 (30.48)	0.800 (20.32)	0.467 (11.86)	0.934 (23.72)	1.100 (27.94)	0.550 (13.97)

**Robinson
Nugent**

812/945-0211
812/945-0805 FAX

PLCC-XXXX-SMTX-TT
Nonvolatile Video Random
Access Memory Socket