

IMRAK® 610

19" Multi-Platform Stand Alone Cabinet for Small and Medium Installation



IMRAK® 610

Overview

Material specification


- **Frame:** Steel 1.0 mm and 1.2 mm
- **Panel mounting angles:** Steel 2.0 mm
- **Panel mount supports:** Steel 1.5 mm
- **Rear panels:** Steel 1.0 mm
- **Doors:** Metal trim steel 1.0 mm
- **Glass:** Tempered 4.0 mm UNI EN 12150-1
- **IMRAK® 610 load capacity:** 250 Kg


Standards

- IEC 60297:** Dimensions of mechanical structures of the 482.6 mm (19") series
- DIN 41494:** Basic specification for the 19" construction systems
- EN 60950:** European safety standard for information technology equipment
- VDE 0100:** Installation and Set up of current systems and earthing
- DIN-1249-11:** Glass in building; glass edges

Colour specification

Standard

RAL 7016 
Cabinet, front door and rear panel

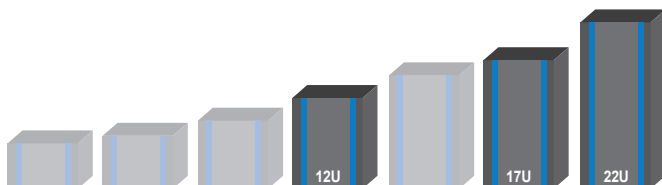
RAL 9005 
Panel mount supports and 19" panel mounting angle

Dimensions

Floor version

Depth: 600 - 800 mm

Width: 600 mm



Introduction to IMRAK® 610

IMRAK® 610 is a mid size floor standing enclosure particularly suitable for networking applications and 19" equipment housing in office or industrial locations. With a height range of 12U to 22U, designed to fit underneath desks and work surfaces.

IMRAK® 610 has a welded frame construction giving it strength and security. It has a rated 250 Kg load capacity. There is a choice of reversible steel or glass front doors. The rear panel has a latch for easy opening and closing. The side panels are non-removable. Cable access is through the base or the ventilated top cover. Two removable plates are fitted to the top cover, allowing for cable access. Alternatively, one or two optional two-fan units can be fitted in the roof without intruding into the useable height. Standard or intelligent 19" fan trays can also be mounted within the enclosure for additional cooling.

The 19" panel mountings are depth adjustable to allow for different sizes of active equipment to be added, or to give as much space as is required in front of the panels for patching applications. Shelves and cases are fitted to the frame with the same "no fixing" hook-in design used in the larger IMRAK® cabinets, reducing time assembly during the configuration.

IMRAK® 610 shares with the IMRAK® family a common interchangeable set of accessories and fittings. It also follows the same design and colour scheme. The IMRAK® 610 is supplied fully assembled. With a single code ordering a standard rack is made easy by just specifying the height, plan size and choice of doors.

Key Features:

- 3 height options: 12U, 17U and 22U
- 2 depth options: 600 mm and 800 mm
- Load capacity: 250 Kg
- Steel or glass lockable front door with quick-release reverse facility
- Standard adjustable front 19" panel mounts
- Top and base gland plates provide cable access
- Natural ventilation through vented slots at top and base
- Optional zero-U roof-mounted fan tray
- Vast selection of application specific accessories



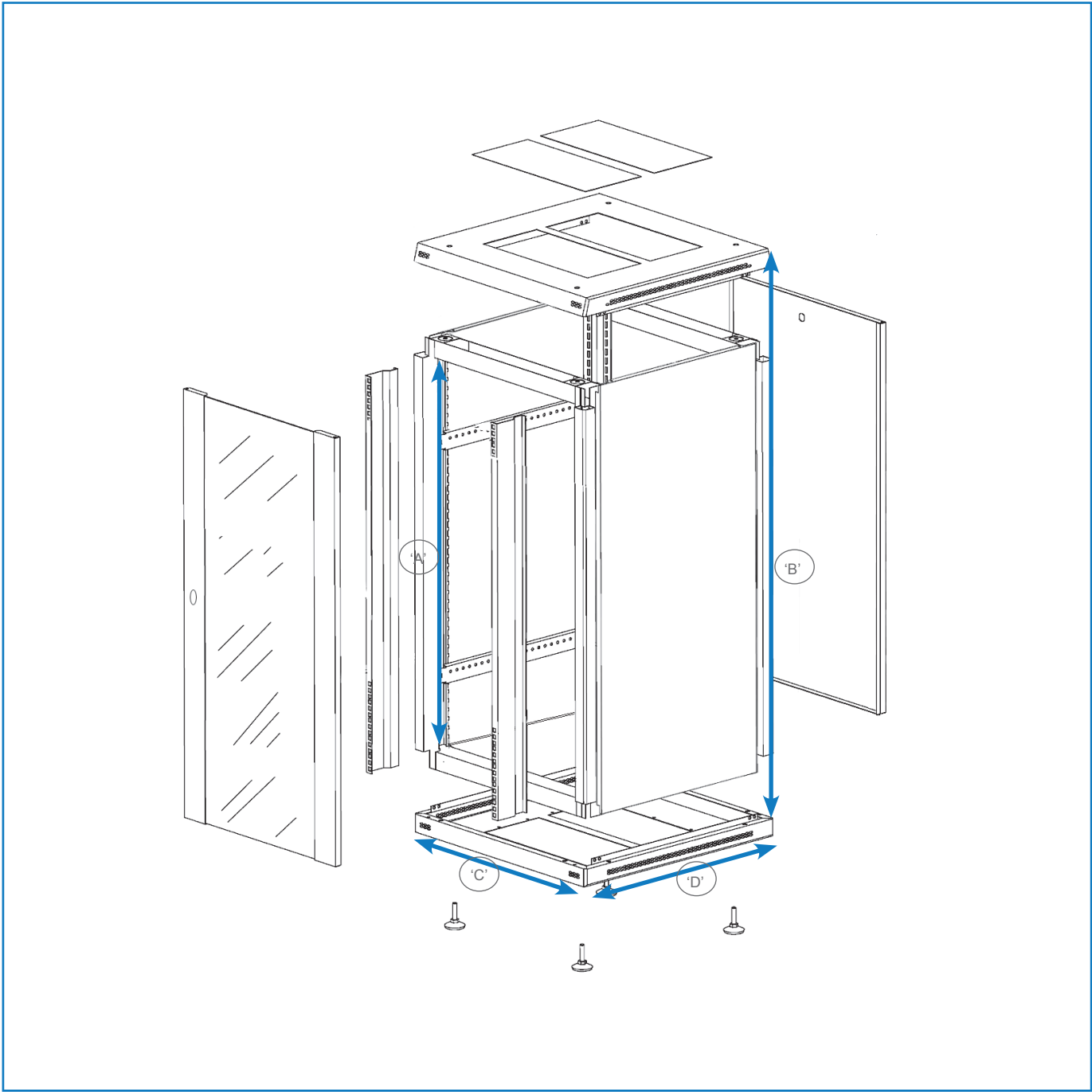
IMRAK® 610 - Standard version
glass front door



IMRAK® 610 - 17U Standard version
metal front door

IMRAK® 610

T



'A' = Internal height (mm)	Unit height	'B' = Total height (mm)	'C' = Width (mm)	'D' = Depth (mm)
542.9	12U	664.4	600	600 / 800
765.15	17U	886.65	600	600 / 800
987.4	22U	1108.9	600	600 / 800

IMRAK® 610

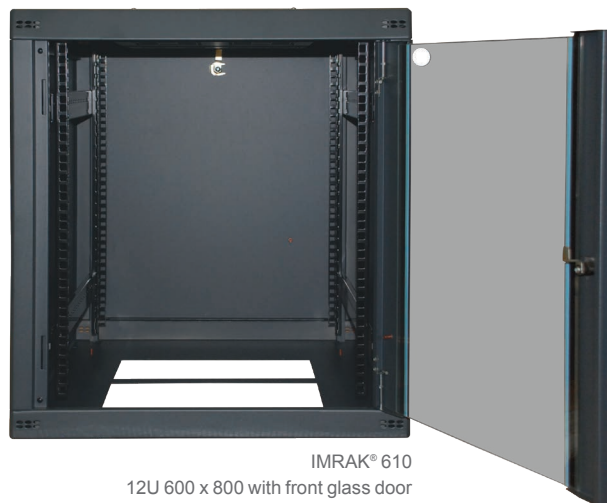
Primary cabinet

5

IMRAK® 610 Primary

The IMRAK® 610 Primary is a ready configured enclosure, prequipped with a lockable front door, a rear panel with latch opening, front 19" panel mounts, two pairs of panel mount supports, top and bottom gland plates and adjustable feet. The bottom of the cabinet has two open areas for cable entry. It can also be used as the starting point for creating a unique enclosure with the use of additional accessories.

Contents of kit	Qty
Open frame	1
Glass front door	1
Rear panel	1
Top / bottom half cover for plate	2
19" panel mounts	1 pair
Panel mount supports	2 pair
Adjustable feet	1 kit



IMRAK® 610
12U 600 x 800 with front glass door
and rear 19" panel mounting angle

Ordering information

Primary front door in glass

Height	Width	Depth	Order code
12U	600 mm	600 mm	VS384-775332
12U	600 mm	800 mm	VS384-775338
17U	600 mm	600 mm	VS384-775333
17U	600 mm	800 mm	VS384-775339
22U	600 mm	600 mm	VS384-775334
22U	600 mm	800 mm	VS384-775340

Primary front door in steel

Height	Width	Depth	Order code
12U	600 mm	600 mm	VS386-775667
12U	600 mm	800 mm	VS386-775670
17U	600 mm	600 mm	VS386-775668
17U	600 mm	800 mm	VS386-775671
22U	600 mm	600 mm	VS386-775669
22U	600 mm	800 mm	VS386-775672

There is a vast range of IMRAK® 610 accessories in order to create your own unique enclosure.



IMRAK® 610
special version with rear vented door

IMRAK® 610

Structural elements

Frame

Fully welded. The (non-removable) side panels with the top and bottom covers form the structure.

Panel mounts

Supplied with 2, 19" frontal panel mounts.

Front doors

Front door is supplied in two options, metal or strengthened glass. Swing handles are available upon request with manual or automatic lock.

Swing handle

Can be supplied as option for both glass or metal doors. A manual or automatic lock is available upon request.

Top cover

The top cover is side vented for natural air flow. Two cable entry areas with gland plate are available as standard. The same area can host a 2 fans tray and maintain a clear path for cables.

Bottom

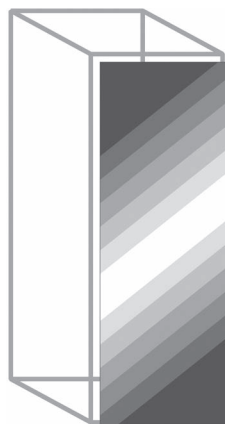
The bottom is open to offer a wider cable entry area.



Frame



Metal door



Glass door



Top cover



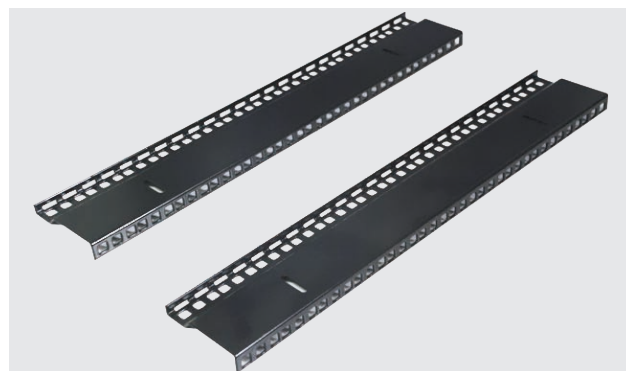
IMRAK® 610
special version with reduced height 10U
and with rear panel mounting angle



IMRAK® 610
special version with reduced height 10U
rear view

19" panel mounting angle

Description	Order code
19" 12U rear panel mount kit	VK385-775380
19" 17U rear panel mount kit	VK385-775381
19" 22U rear panel mount kit	VK385-775382

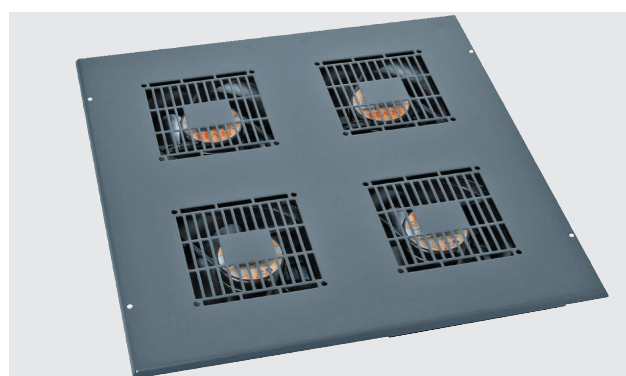


19" panel mounting angle

Thermal kit*

Description	Order code
Thermal kit 2 fans (half)	VK385-775532
Thermal kit 4 fans (full)	VK385-775828
Thermal kit 2 fans low noise (half)	VK385-775895
Thermal kit 4 fans low noise (full)	VK385-775896

*Power cord not included



Thermal kit

Thermostat and wiring kit

Description	Order code
Thermostat and wiring kit	VK385-775843



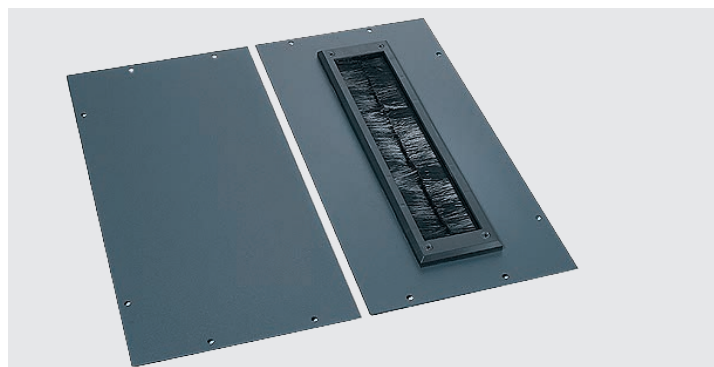
Thermostat and wiring kit

Entry panel

Description	Order code
Cable entry panel with brush top / bottom (half)	VK385-775535
Plain cover top / bottom (half)	VK385-775629
Vented cover top / bottom (half)	VK385-775727

Castors kit

Description	Order code
Light/medium duty castors kit - 80 Kg static load braked	VK385-775721
Light/medium duty castors kit - 80 Kg static load unbraked	VK385-775722
Heavy duty castors kit - 115 Kg static load 2 braked	VK385-776250
Heavy duty castors kit - 115 Kg static load 2 unbraked	VK385-776251



Kit spazzola ingresso cavi



2 castors kit - 80 Kg static load braked



2 castors kit - 80 Kg static load unbraked



2 castors kit - 115 Kg static load braked



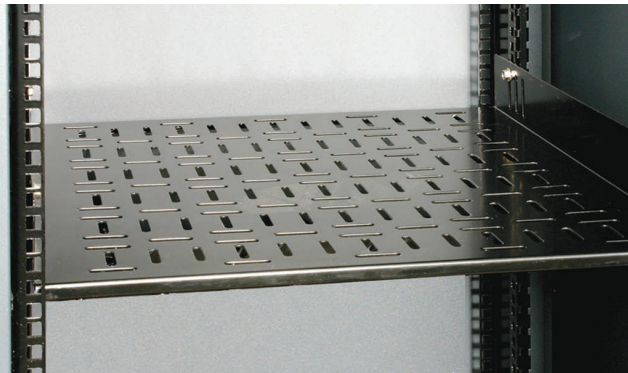
2 castors kit - 115 Kg static load unbraked

IMRAK® 610

Accessories

Fixed shelves kit - Load reating 100 Kg

Description	Order code
370 mm deep fixed shelves kit (600/800 deep version)	VK385-776192
470 mm deep fixed shelves kit (600/800 deep version)	VK385-775730
570 mm deep fixed shelves kit (800 deep version)	VK385-776194
670 mm deep fixed shelves kit (800 deep version)	VK385-775732



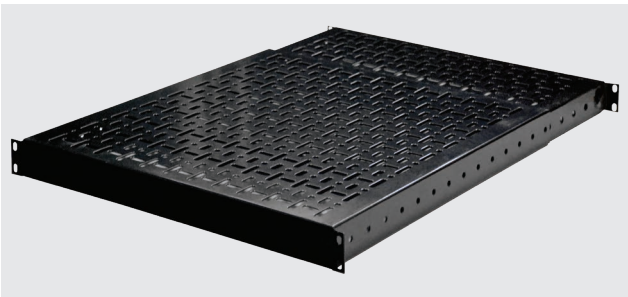
Fixed shelves kit

Adjustable fixed shelf

Description	Order code
Adjustable fixed shelf (from 550 mm up to 900 mm)	VT584-000366

Sliding shelves kit - Load reating 35 Kg

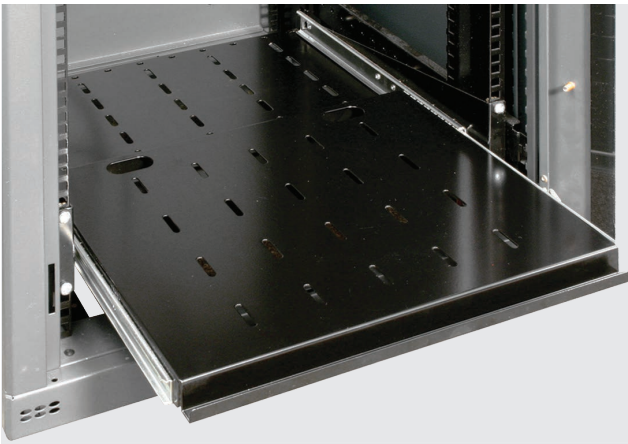
Description	Order code
425 mm deep sliding shelf kit (600/800 deep version)	VK385-776368
625 mm deep sliding shelf kit (800 deep version)	VK385-776369



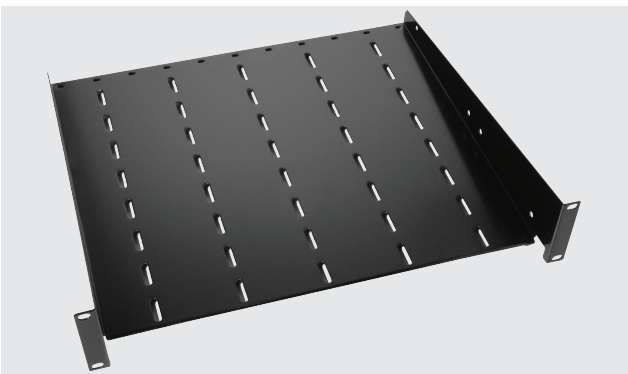
Adjustable fixed shelf

19" cantilever shelves

Description	Order code
255 mm cantilever shelf kit	VK593-599790
400 mm cantilever shelf kit	VK593-599791



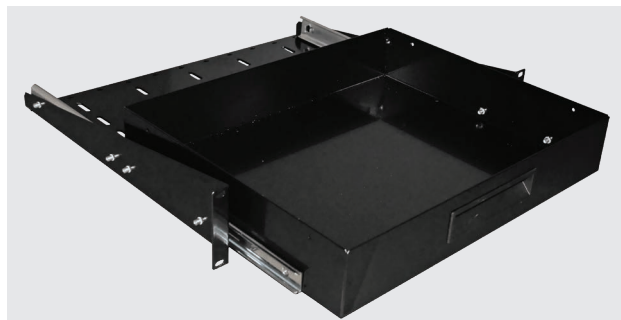
Sliding shelves kit



19" cantilever shelves

19" sliding drawing kit

Description	Order code
19" 2U sliding drawing kit RAL 9005	VT390-784799



19" sliding drawing kit

19" Cantilever sliding keyboard

Description	Order code
19" cantilever sliding keyboard shelves kit	VK385-775709



19" cantilever sliding keyboard

Secure box

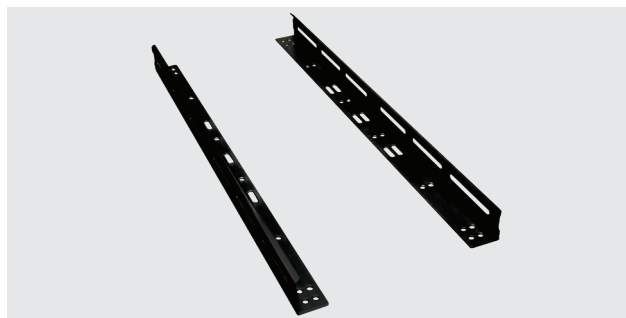
Description	Order code
Sensible equipment secure box 2U 19" 600 mm	VT584-000537



Secure box

Chassis support

Description	Black RAL 9005	Zinc plated 'conductive'
	Order code	Order code
370 mm chassis support kit	VK385-776268	VT390-787965
470 mm chassis support kit	VK385-775952	VT390-787966
570 mm chassis support kit	VK385-776252	VT390-787528
670 mm chassis support kit (800 mm depth version)	VK385-775953	VT390-787537



Chassis support black version



Chassis support zinc plated version

IMRAK® 610

Accessories

Cantilever Support

Description	Order code
Cantilever support to organize horizontal cables	VT584-000252

Cable bar 19"

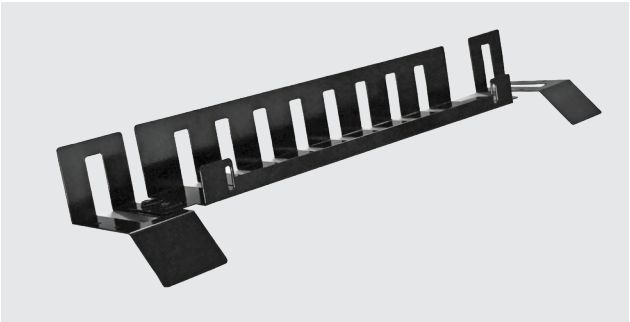
Description	Order code
Cable bar 19" black	VK385-776416

Single and double cable hoops kit

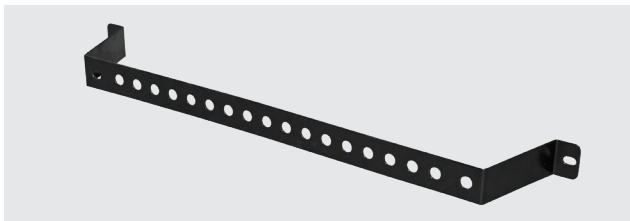
Description	Order code
Double cable metal hoops kit of 10	VK385-775723
Single cable metal hoops kit of 10	VK385-775724
Single cable plastic hoops kit of 10	VK385-776232

Cable management panels

Description	Order code
1U 19" cable management panel w/ metal hoops	VK385-776196
1U 19" cable management panel w/plastic hoops	VK385-776229
Brush strip panel 1U black	VK385-776414
Cable entry panel 2U black	VK385-776413
Black cable management panel 2U	VK385-776415



Cantilever Support



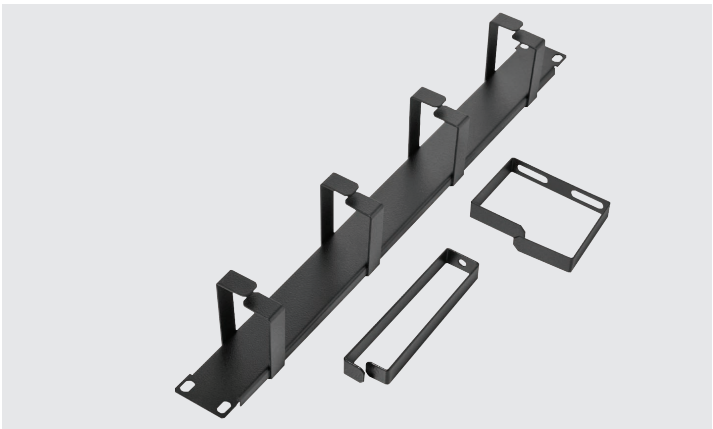
Cable bar 19"



Single cable metal hoops kit



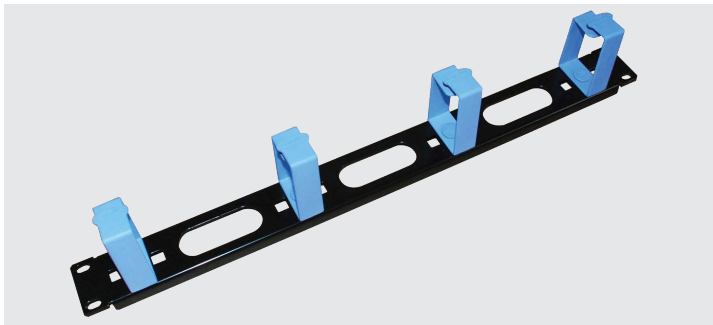
Single cable plastic hoops kit



Cable management panels kit



Cable entry panel 2U



Cable management panel w/ plastic hoops



Cable management panel 2U

19" closing panels

Description	Order code
1U 19" blank panel - black (RAL 9005) finishing	VK385-775905
2U 19" blank panel - black (RAL 9005) finishing	VK385-775906
3U 19" blank panel - black (RAL 9005) finishing	VK385-775907
4U 19" blank panel - black (RAL 9005) finishing	VK385-775908
5U 19" blank panel - black (RAL 9005) finishing	VK385-775909
1U 19" steel vented panel - black (RAL 9005) finishing	VT555-501531
2U 19" steel vented panel - black (RAL 9005) finishing	VT555-501532
1U Quickfix blank panel kit 100 pcs. - plastic RAL 7016 finishing	VA584-000571



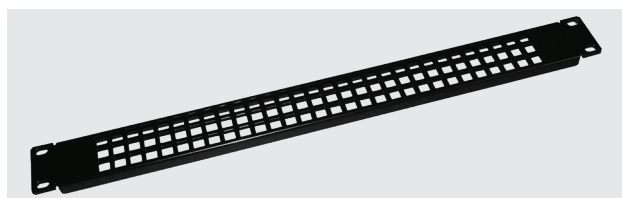
19" steel blank panels



19" plastic blank panels

Caged nuts and fixings

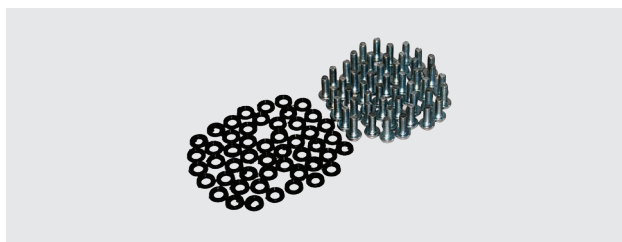
Description	Order code
M6 caged nuts kit 50 pcs.	VK385-776190
M6 x 12mm pozzi drive screws and cup washers kit 50 pcs.	VK385-776191



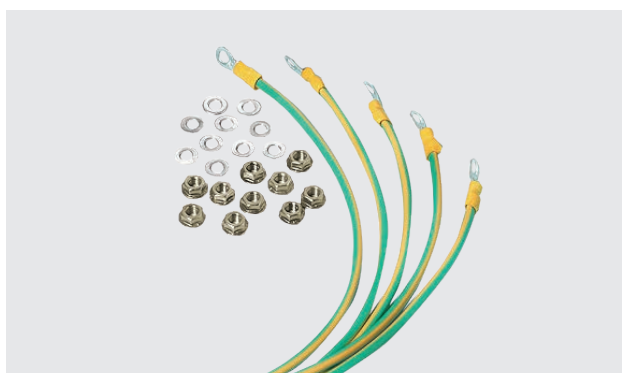
19" steel vented panels

Earth continuity kit

Description	Order code
Earth continuity kit	VK385-775726



Caged nuts and fixings



Earth continuity kit

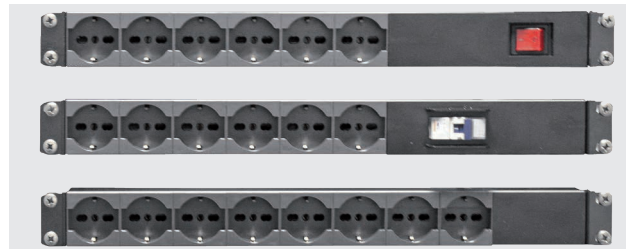
IMRAK® 610

Power Distribution Unit

Power Distribution Unit

1U 19" rackmount multistandard aluminum PDU

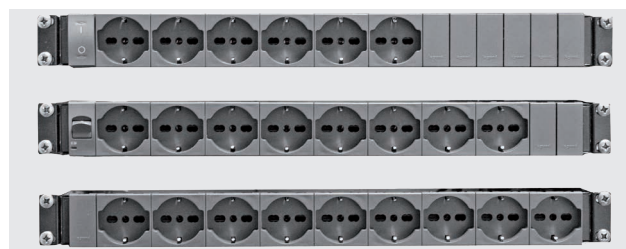
N. sockets	A	Protection	Cable & Plug	Order code
6	16A	--	2 mt + Schuko	C06ALMST-SI2S
6	16A	illuminated switch	2 mt + Schuko	C06ALMST-IL2S
7	16A	2P+N MGT	2 mt + Schuko	C07ALMST-MT2S
8	16A	--	2 mt + Schuko	C08ALMST-SI2S
8	16A	illuminated switch	2 mt + Schuko	C08ALMST-IL2S



Multistandard aluminum PDU

1U 19" rackmount multistandard steel PDU

N. sockets	A	Protection	Cable & Plug	Order code
6	16A	--	2 mt + Schuko	K06MET-SI2S
6	16A	illuminated switch	2 mt + Schuko	K06MET-IL2S
6	16A	2P+N MGT	2 mt + Schuko	K06MET-MT2S
8	16A	--	2 mt + Schuko	K08MET-SI2S
8	16A	illuminated switch	2 mt + Schuko	K08MET-IL2S
9	16A	2P+N MGT	2 mt + Schuko	K09MET-MT2S



Multistandard steel PDU

Multistandard aluminum vertical PDU

N. sockets	A	Protection	Cable & Plug	Order code
12	16A	2P+N MGT	2 mt + Schuko	C12ALMST-MT2S
12	16A	illuminated switch	2 mt + Schuko	C12ALMST-IL2S
16	16A	illuminated switch	2 mt + Schuko	C16ALMST-IL2S
16	16A	2P+N MGT	2 mt + Schuko	C16ALMST-MT2S



Multistandard aluminum vertical PDU

1U 19" rackmount IEC C13 steel PDU

N. sockets	A	Protection	Cable & Plug	Order code
8	16A	illuminated switch	2 mt + Schuko	C08MET-16AC13IECIL2S
8	16A	2P+N MGT	2 mt + Schuko	C08MET-16AC13IECMT2S
12	16A	illuminated switch	2 mt + Schuko	C12MET-16AC13IECIL2S
16	16A	--	3 mt + IEC 60309	K16MET-16AC13IECIND3MT
16	32A	--	3 mt + IEC 60309	K16MET-32AC13IECIND3MT



IEC C13 8/12 sockets steel PDU



IEC C13 16 sockets steel PDU

GOMA ELETTRONICA SpA
10146 Torino - Italy
Strada Antica di Collegno, 225

Tel: +39 011 7725024
Fax: +39 011 712298

www.gomaelettronica.it

All trademarks are the property of their respective
owners GOMA ELETTRONICA SpA • P-CTG-EN1118