

Switch disconnecter with fuse 250 A, Size 3, 4-pole for LV HRC fuse Sz. 0 and 1
Front operating mechanism left Complete unit with direct operating mechanism
gray flat terminal



Model	
product brand name	SENTRON
product designation	3KF switch disconnecter with fuses
design of the product	3KF switch disconnecter with fuses
product variations	3KF NH
design of the actuating element	manual operating mechanism
design of handle	Direct operating mechanism, gray
direction of actuation	from the front
type of the driving mechanism motor drive	No
number of poles	4
size of disconnecting link	1 and 0
size of switch disconnecter	3
size of fuse link	NH0, NH1
mechanical service life (operating cycles) typical	10 000
electrical endurance (operating cycles)	
• at AC-23 A at 440 V	5 000
• at AC-23 A at 690 V	4 000
• at DC-23 A at 440 V	1 000
I ² t value	
• with closed switch for combination switch + fuse at 500 V maximum	437 000 A ² ·s
• with closed switch for combination switch + fuse at 400 V maximum	437 000 A ² ·s
• with closed switch at 690 V for combination switch + gG fuse maximum	490 100 A ² ·s
• of the fuse at 500 V maximum permissible	1 500 000 A ² ·s
• of the gG fuse at 690 V maximum permissible	940 000 A ² ·s
• of the aM fuse at 690 V maximum permissible	1 400 000 A ² ·s
position of the switch operating mechanism	left
fuse system	LV HRC fuse
overvoltage category	IV
operating voltage with current paths in series	
• with degree of pollution 2 at DC rated value	440 / 3
• with degree of pollution 3 at DC rated value	440 / 3
surge voltage resistance rated value	12 kV
Supply voltage	
operating voltage at AC rated value maximum	690 V
Protection class	
protection class IP	IP00
protection class IP	
• with closed switch with cover or cable lug cover	IP20



<ul style="list-style-type: none"> • on the front 	IP00
Dissipation	
power loss [W]	
<ul style="list-style-type: none"> • with conventional rated thermal current per pole 	15 W
<ul style="list-style-type: none"> • with conventional rated thermal current per device 	45 W
<ul style="list-style-type: none"> • with conventional rated thermal current without fuse per pole 	15 W
<ul style="list-style-type: none"> • with conventional rated thermal current without fuse per device 	45 W
<ul style="list-style-type: none"> • for rated value of the current at AC in hot operating state per pole 	15 W
<ul style="list-style-type: none"> • of the fuse per fuse maximum 	25.5 W
Main circuit	
operating power at AC-23 A at 500 V rated value	160 kW
operational current rated value	250 A
Auxiliary circuit	
number of connected NC contacts for auxiliary contacts	0
number of connected NO contacts for auxiliary contacts	0
number of connected CO contacts for auxiliary contacts	0
number of CO contacts for auxiliary contacts	0
number of NC contacts for auxiliary contacts	8
number of NO contacts for auxiliary contacts	8
suitability for use	
<ul style="list-style-type: none"> • main switch 	Yes
<ul style="list-style-type: none"> • switch disconnecter 	Yes
<ul style="list-style-type: none"> • EMERGENCY OFF switch 	No
<ul style="list-style-type: none"> • safety switch 	Yes
<ul style="list-style-type: none"> • maintenance/repair switch 	Yes
product component	
<ul style="list-style-type: none"> • voltage trigger 	No
<ul style="list-style-type: none"> • undervoltage release 	No
<ul style="list-style-type: none"> • undervoltage release with leading contact 	No
product feature sealable	Yes
product extension auxiliary switch	Yes
product extension optional	
<ul style="list-style-type: none"> • locking capability 	No
<ul style="list-style-type: none"> • motor drive 	No
<ul style="list-style-type: none"> • fuse monitoring 	Yes
product function	
<ul style="list-style-type: none"> • fuse monitoring 	No
<ul style="list-style-type: none"> • overvoltage protection monitoring 	No
Short circuit	
short-circuit current making capacity (I _{cm}) for switch disconnecter at 690 V AC/440 V DC without fuse link rated value minimum	13.6 kA
conditional short-circuit current with line-side fuse protection	
<ul style="list-style-type: none"> • at 500 V by gG fuse rated value 	100 kA
<ul style="list-style-type: none"> • at 690 V by gG fuse rated value 	100 kA
Connections	
arrangement of electrical connectors for main current circuit	Top and bottom
tightening torque with screw-type terminals	
<ul style="list-style-type: none"> • minimum 	30 N·m
<ul style="list-style-type: none"> • maximum 	44 N·m
type of connectable conductor cross-sections for aluminum conductor stranded with lug	1x (6 ... 240 mm ²), 2x (6 ... 120 mm ²)
type of connectable conductor cross-sections	
<ul style="list-style-type: none"> • for copper busbar 	1x (25 x 3 mm ²)
type of connectable conductor cross-sections for copper conductor	
<ul style="list-style-type: none"> • stranded with lug according to DIN 46234 	1x (6 ... 240 mm ²), 2x (6 ... 120 mm ²)
<ul style="list-style-type: none"> • stranded with lug according to DIN 46235 	1x (6 ... 240 mm ²), 2x (6 ... 120 mm ²)
type of electrical connection for main current circuit	flat connector

Mechanical Design	
height	207 mm
width	308.5 mm
depth	233.3 mm
fastening method	floor mounting
fastening method	
• 4-hole front mounting	No
• front mounting with central attachment	No
• rail mounting	No
mounting position	any
net weight	5 650 g

Environmental conditions	
ambient temperature during operation	
• minimum	-25 °C
• maximum	70 °C
ambient temperature during storage	
• minimum	-50 °C
• maximum	80 °C

Approvals Certificates

General Product Approval	Declaration of Conformity
Confirmation  	Miscellaneous  

Declaration of Conformity	Test Certificates	Marine / Shipping	other	Environment
	Type Test Certificates/Test Report		Miscellaneous	Confirmation Environmental Confirmations

Further information

Siemens has decided to exit the Russian market (see here).
<https://press.siemens.com/global/en/pressrelease/siemens-wind-down-russian-business>

Siemens is working on the renewal of the current EAC certificates.
Please contact your local Siemens office on the status of validity of the EAC certification if you intend to import or offer to supply these products to an EAC relevant market (other than the sanctioned EAEU member states Russia or Belarus).

Information on the packaging
<https://support.industry.siemens.com/cs/ww/en/view/109813875>

Information- and Downloadcenter (Catalogs, Brochures,...)
<http://www.siemens.com/lowvoltage/catalogs>

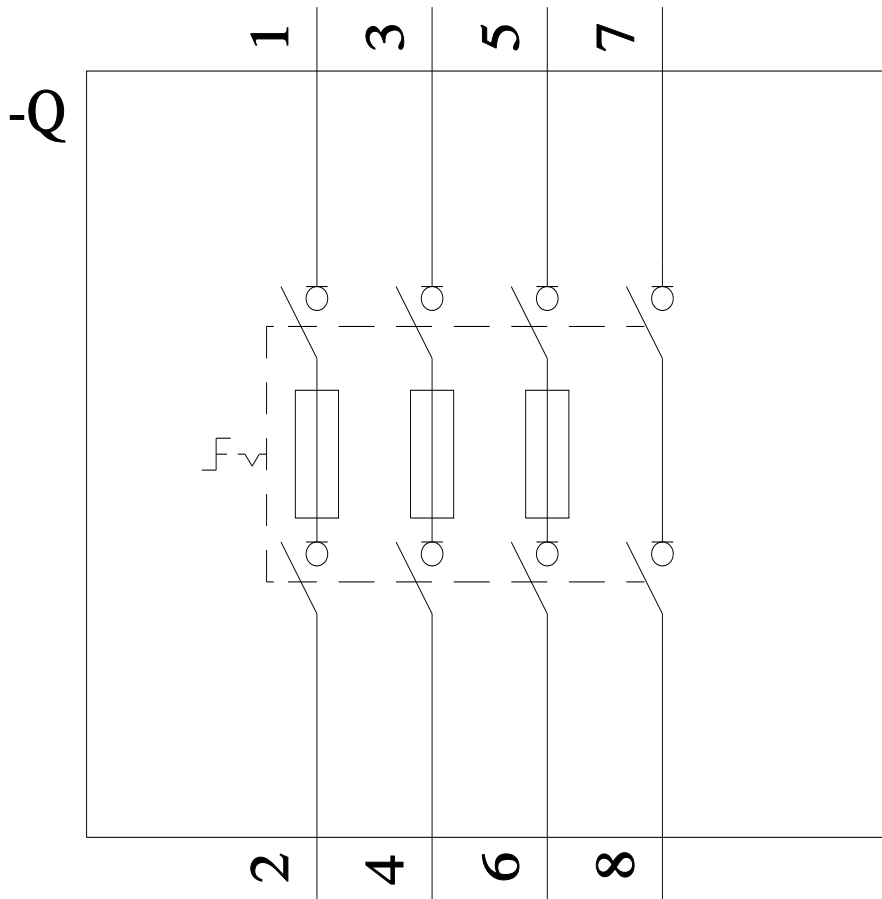
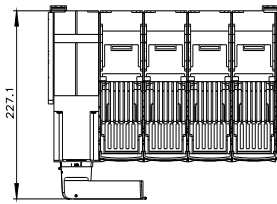
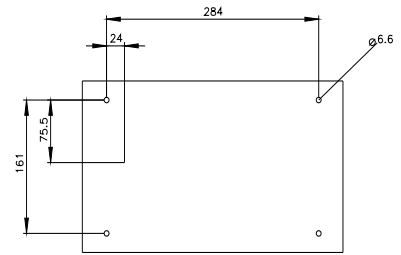
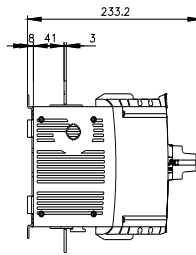
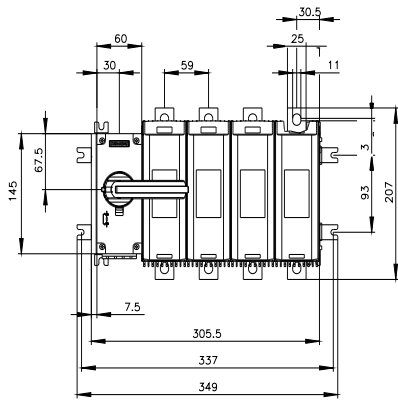
Industry Mall (Online ordering system)
<https://mall.industry.siemens.com/mall/en/en/Catalog/product?mlfb=3KF3425-2LF11>

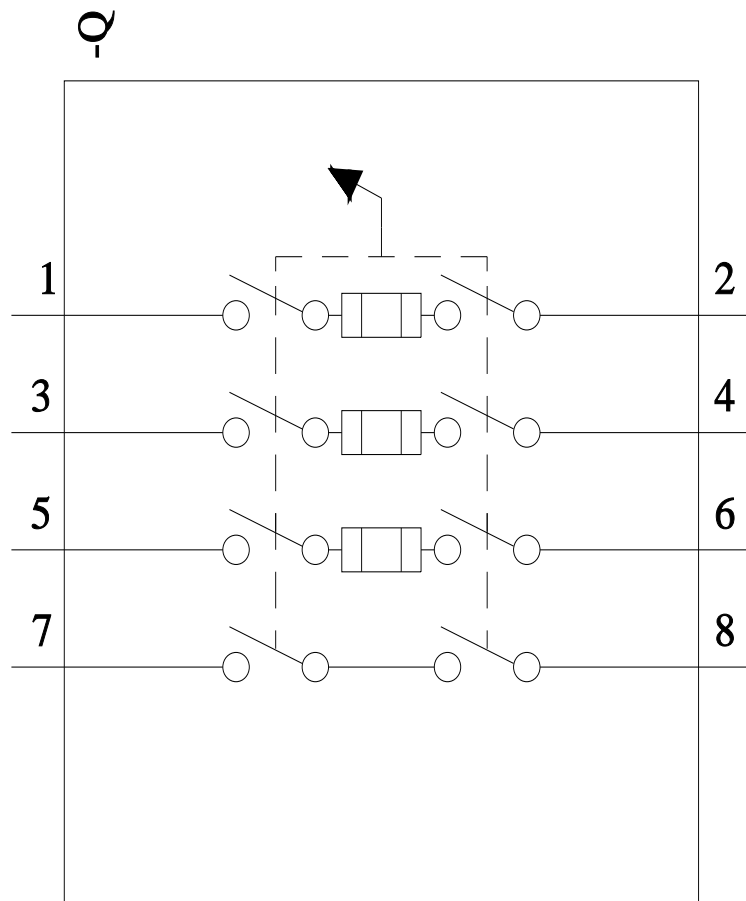
Service&Support (Manuals, Certificates, Characteristics, FAQs,...)
<https://support.industry.siemens.com/cs/ww/en/ps/3KF3425-2LF11>

Image database (product images, 2D dimension drawings, 3D models, device circuit diagrams, ...)
http://www.automation.siemens.com/bilddb/cax_en.aspx?mlfb=3KF3425-2LF11

CAX-Online-Generator
<http://www.siemens.com/cax>

Tender specifications
<http://www.siemens.com/specifications>





last modified:

8/2/2022 

