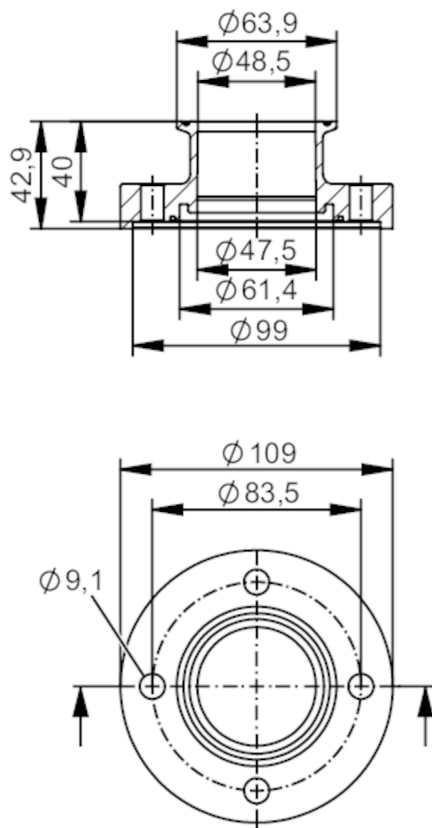




Process adapter clamp ISO 2852

ADAPT ISO2852 DN50



Application		
Design	for volumetric flow meters SMF	
Application	food and beverage industry; hygienic systems	
Pressure rating	16 bar	1.6 MPa
Tests / approvals		
Pressure Equipment Directive	A possible classification to PED depends on the application and has to be carried out by the user / operator.	
Safety instructions	The compatibility between medium and product material has to be checked in all applications.	
Mechanical data		
Weight	[g]	2580.7
Materials	stainless steel (316L/1.4404)	
Nominal diameter	DN50 (2“)	
Sensor connection	ifm-specific device flange	
Process connection	Clamp ISO 2852	
Process connection suitable for pipe standard	(ISO 2037); (DIN EN 10357 Series D)	
Surface characteristics Ra/Rz of the wetted parts	Ra ≤ 0.4 µm	

E40483



Process adapter clamp ISO 2852

ADAPT ISO2852 DN50

Accessories	
Items supplied	screws 8
Remarks	
Pack quantity	2 pcs.