



Connectors > PCB Connectors > PCB Headers & Receptacles



PCB Connector Type: **PCB Mount Receptacle**

PCB Mount Orientation: **Vertical**

Connector System: **Board-to-Board**

Number of Positions: **80**

Number of Rows: **1**

Features

Product Type Features

PCB Connector Type	PCB Mount Receptacle
Connector System	Board-to-Board
Sealable	No
Connector & Contact Terminates To	Printed Circuit Board
Connector Product Type	Connector Assembly

Configuration Features

Stackable	Yes
PCB Mount Orientation	Vertical
Number of Positions	80
Number of Rows	1

Electrical Characteristics

Operating Voltage	250 VAC
Insulation Resistance	1 MΩ

Contact Features

Contact Mating Area Plating Material Thickness	.3 μm[11.9 μin]
Contact Shape & Form	Square
PCB Contact Termination Area Plating Material Thickness	1 μm[39.4 μin]
Contact Layout	Inline



Contact Mating Area Length	3.6 mm[.141 in]
Contact Base Material	Phosphor Bronze
PCB Contact Termination Area Plating Material	Tin
Contact Mating Area Plating Material	Gold (Au)
Contact Type	Socket
Contact Current Rating (Max)	1 A

Termination Features

Termination Post & Tail Length	3.2 mm[.126 in]
Termination Method to PCB	Through Hole - Solder

Mechanical Attachment

Mating Alignment Type	Guide Pins
PCB Mount Alignment Type	Post Polarization
PCB Mount Retention	Without
PCB Mount Alignment	Without
Connector Mounting Type	Board Mount
Mating Alignment	With

Housing Features

Housing Material	Nylon - GF
Centerline (Pitch)	1.27 mm[.05 in]

Dimensions

Stack Height	12 mm[.472 in]
	.3 in
Connector Height	9.5 mm[.374 in]

Usage Conditions

Operating Temperature Range	-55 – 85 °C[-67 – 185 °F]
-----------------------------	---------------------------

Operation/Application

Circuit Application	Signal
---------------------	--------

Industry Standards

UL Flammability Rating	UL 94V-0
------------------------	----------

Packaging Features

Packaging Quantity	70
Packaging Method	Tray



Product Compliance

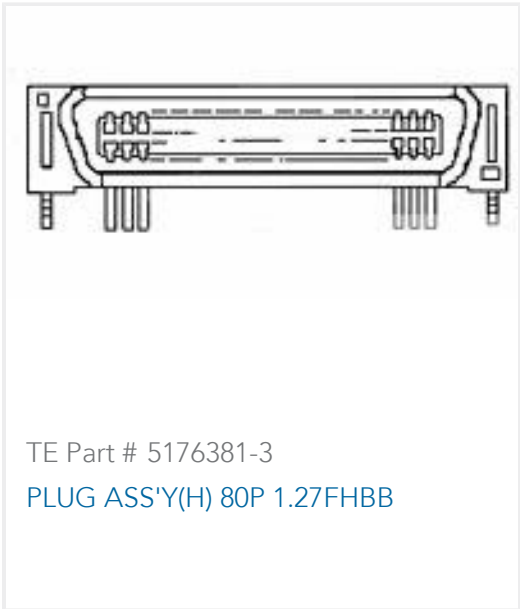
For compliance documentation, visit the product page on TE.com>

EU RoHS Directive 2011/65/EU	Compliant
EU ELV Directive 2000/53/EC	Compliant
China RoHS 2 Directive MIIT Order No 32, 2016	No Restricted Materials Above Threshold
EU REACH Regulation (EC) No. 1907/2006	Current ECHA Candidate List: JAN 2025 (247) Not Yet Reviewed
Halogen Content	Not Low Halogen - contains Br or Cl > 900 ppm.
Solder Process Capability	Wave solder capable to 265°C

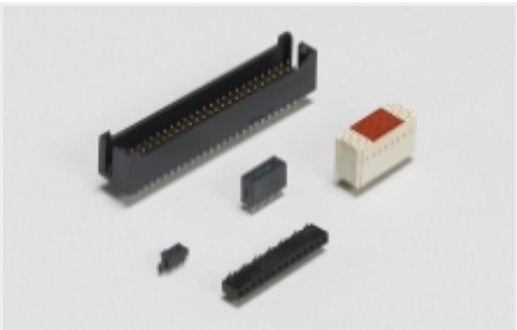
Product Compliance Disclaimer

This information is provided based on reasonable inquiry of our suppliers and represents our current actual knowledge based on the information they provided. This information is subject to change. The part numbers that TE has identified as EU RoHS compliant have a maximum concentration of 0.1% by weight in homogenous materials for lead, hexavalent chromium, mercury, PBB, PBDE, DBP, BBP, DEHP, DIBP, and 0.01% for cadmium, or qualify for an exemption to these limits as defined in the Annexes of Directive 2011/65/EU (RoHS2). Finished electrical and electronic equipment products will be CE marked as required by Directive 2011/65/EU. Components may not be CE marked. Additionally, the part numbers that TE has identified as EU ELV compliant have a maximum concentration of 0.1% by weight in homogenous materials for lead, hexavalent chromium, and mercury, and 0.01% for cadmium, or qualify for an exemption to these limits as defined in the Annexes of Directive 2000/53/EC (ELV). Regarding the REACH Regulations, TE’s information on SVHC in articles for this part number is still based on the European Chemical Agency (ECHA) ‘Guidance on requirements for substances in articles’(Version: 2, April 2011), applying the 0.1% weight on weight concentration threshold at the finished product level. TE is aware of the European Court of Justice ruling of September 10th, 2015 also known as O5A (Once An Article Always An Article) stating that, in case of ‘complex object’, the threshold for a SVHC must be applied to both the product as a whole and simultaneously to each of the articles forming part of its composition. TE has evaluated this ruling based on the new ECHA “Guidance on requirements for substances in articles” (June 2017, version 4.0) and will be updating its statements accordingly.

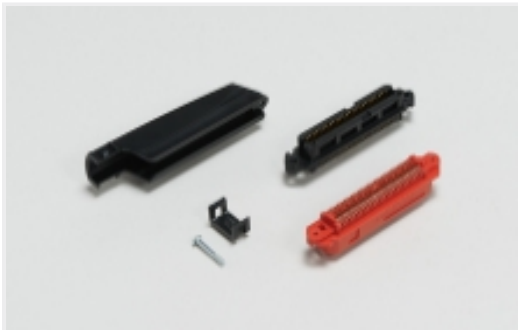
Compatible Parts



Also in the Series | CHAMP .050 Series I



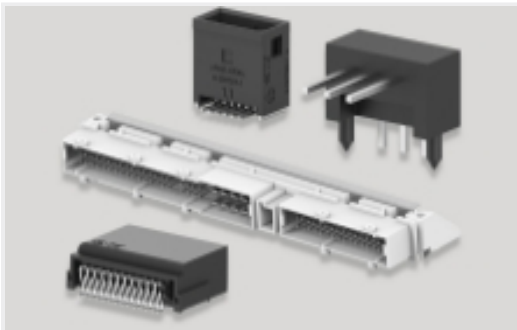
Board-to-Board Headers & Receptacles(133)



IDC D-Sub Connectors(6)

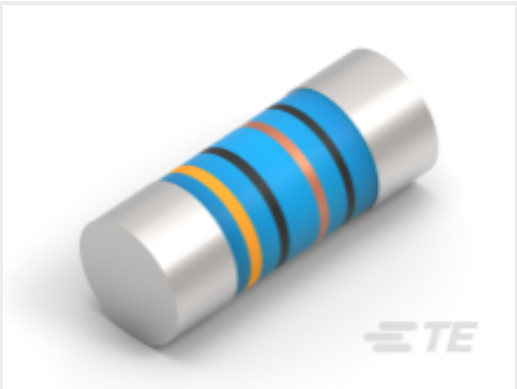


PCB D-Sub Connectors(1)



PCB Headers & Receptacles(133)

Customers Also Bought



TE Part #2176314-4
MELF SMA_A 180R 0.1% 15PPM 0102 0.3W



TE Part #3-1415020-1
PT570N20



TE Part #5-103911-3
60 SYSTEM 50 RCPT ASSY DRRA



TE Part #5-104076-2
60 SYS50 HDR DRST SHRD W/SL SN



TE Part #1-1825006-9
GDS10S04=DIP SW,SLIDE,SMT



TE Part #5146893-2
1FHR,84,30A/S,S,C,S08,09,10



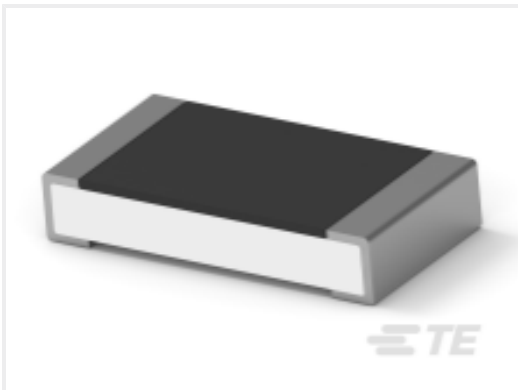
TE Part #1-928836-2
MOD2 PIN WITH A-PIN L/P



TE Part #1-1437581-1
ASE22RL=AUTOSLIDE DP



TE Part #7-2176246-6
CRGS2512 5% 1M8



TE Part #4-2176391-7
RQ 1206 37K4 0.1% 10PPM 5K RL

Documents

Product Drawings

AMP FH CONN REC V 80P (H=11)

English

CAD Files

3D PDF

English

Customer View Model

ENG_CVM_5176372-3_O.2d_dxf.zip

5176372-3

PCB Mount Receptacle, Vertical, Board-to-Board, 80 Position, 1.27 mm [.05 in]
Centerline, Gold (Au), Through Hole - Solder, CHAMP .050 Series I



English

Customer View Model

[ENG_CVM_5176372-3_O.3d_igs.zip](#)

English

Customer View Model

[ENG_CVM_5176372-3_O.3d_stp.zip](#)

English

By downloading the CAD file I accept and agree to the [Terms and Conditions](#) of use.

Instruction Sheets

AMP FH Board-to-Board Connectors

English

[Instruction Sheet \(non U.S.\)](#)

English