



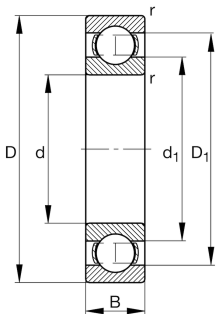
FAG

16002-A-C3

Deep groove ball bearing

Deep groove ball bearing 160..-A, single row, steel sheet metal cage

Technical information



Your current product variant

Changed internal design	A	Design variant A
Sealing	Without	Not sealed
Cage	JN	Steel sheet metal
Tolerance class	PN	Normal (PN)
Dimensional / heat stabilization	SN	Rings dimensional stabilized up to 120°
Lubricant	Without	Bearing not greased
Radial internal clearance	C3 (Group 3)	Internal clearance larger than CN
Bore type	Z	Cylindrical

Main Dimensions & Performance Data

d	15 mm	Bore diameter
D	32 mm	Outside diameter
B	8 mm	Width
C _r	5,590 N	Basic dynamic load rating, radial
C _{0r}	2,840 N	Basic static load rating, radial
C _{ur}	191 N	Fatigue load limit, radial
n _G	33,500 1/min	Limiting speed
n _{gr}	20,000 1/min	Reference speed
m	25 g	Weight



Mounting dimensions

$d_{a\ min}$	17 mm	Minimum diameter shaft shoulder
$D_{a\ max}$	30 mm	Maximum diameter of housing shoulder
$r_{a\ max}$	0.3 mm	Maximum fillet radius

Dimensions

r_{\min}	0.3 mm	Minimum chamfer dimension
D_1	26.8 mm	Shoulder diameter outer ring
D_2	28.8 mm	Caliber diameter outer ring
d_1	20.5 mm	Shoulder diameter inner ring


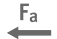




Temperature range

T_{\min}	-30 °C	Operating temperature min.
T_{\max}	120 °C	Operating temperature max.

Calculation factors

f_0	14	Calculation factor
-------	----	--------------------

Characteristics

	Radial load
	Axial load in one direction
	Axial load in two directions
	Grease Lubrication
	Oil Lubrication
	Not sealed