

# Actuator

704.411.010I

Distribution by  
Rs-online<https://rs-online.eao.com/p/704.411.010I>

Your product:

---



## 704.411.010I Actuator

### FRONT

|                       |           |
|-----------------------|-----------|
| Front dimension:      | Ø 35 mm   |
| Front form:           | Round     |
| Front bezel colour:   | Black     |
| Front bezel material: | Aluminium |

### MOUNTING

|                   |                |
|-------------------|----------------|
| Design:           | Flush          |
| Mounting cut-out: | Ø 30.5 mm      |
| Mounting type:    | Panel mounting |

### OPERATING-/INDICATION PART

|                   |         |
|-------------------|---------|
| Lever colour:     | Black   |
| Lever bar colour: | Red     |
| Lever material:   | plastic |
| Lever shape:      | short   |

### ELECTRICAL CHARACTERISTICS

|            |   |
|------------|---|
| Standards: | The switches comply with the "Standards for low-voltage switching devices" DIN EN 60947-1 |
|------------|---|

### MECHANICAL CHARACTERISTIC

|                      |                   |
|----------------------|-------------------|
| Switching action:    | Rest - Maintained |
| Switching positions: | 2 positions       |

|                             |                               |
|-----------------------------|-------------------------------|
| <b>Switching angle:</b>     | 90° right                     |
| <b>Mechanical lifetime:</b> | ≤2.5 Mil. cycles of operation |
| <b>Weight:</b>              | 0.056 kg                      |

#### AMBIENT CONDITION

|                               |                     |
|-------------------------------|---------------------|
| <b>IP Protection:</b>         | IP65 front side     |
| <b>Operating temperature:</b> | – 40 °C ... + 55 °C |
| <b>Storage temperature:</b>   | – 40 °C ... + 85 °C |

#### CERTIFICATE

|               |                 |
|---------------|-----------------|
| <b>REACH:</b> | REACH compliant |
| <b>RoHS:</b>  | RoHS compliant  |

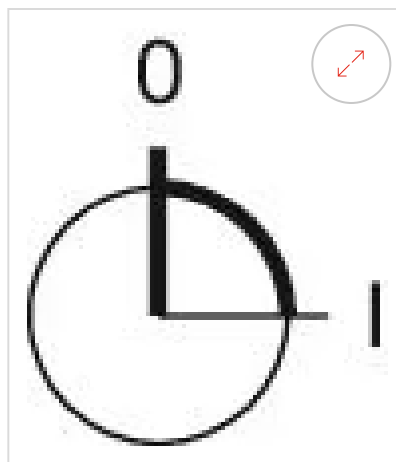
#### OTHER

|                           |   |
|---------------------------|---|
| <b>Short Description:</b> | Actuator, Ø 30.5 mm, Ø 35 mm, optional illuminative, Black, short, Round, Black, Aluminium, anodised, Rest - Maintained |
|---------------------------|---|

|               |   |
|---------------|---|
| <b>Hints:</b> | Max. 3 switching elements can be clipped on |
|---------------|---|

|   |   |
|---|---|
| <b>max. number of switching elements:</b> | 3 |
|---|---|

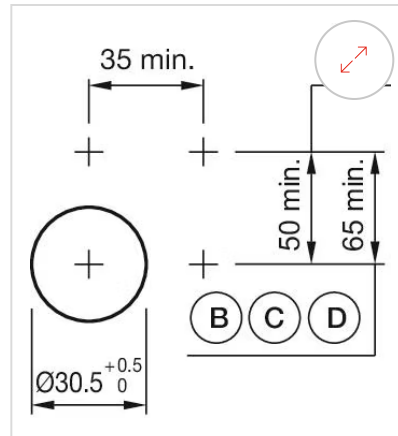
**Switching positions:**



**Wiring diagrams:**

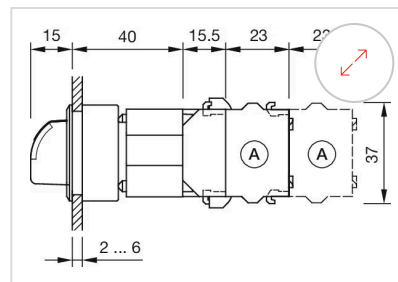


### Mounting cut-outs:



A = Screw terminal  
 B = Push-in terminal (PIT)  
 C = Plug-in terminal 6.3 mm x 0.8 mm  
 D = Double plug-in terminal 6.3 mm x 0.8 mm

### Dimension drawings:



X = Screw terminal