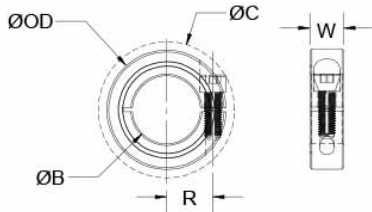




MCL-20-F

Ruland MCL-20-F, 20mm One-Piece Shaft Collar, Black Oxide Steel, Clamp Style, 40mm OD, 15mm Width



Description

Ruland MCL-20-F is a one-piece shaft collar with a 20mm bore, 40mm OD, and 15mm width. The clamp style design does not mar the shaft, is easy to remove, and is indefinitely adjustable. It is commonly used for guiding, spacing, stopping, mounting, and component alignment. Equipment manufacturers benefit from the tightly controlled face to bore perpendicularity (TIR of $\leq .05\text{mm}$). Perpendicularity is critical for alignment when the shaft collar is used as a load bearing face, mechanical stop, or for mounting components such as gears or bearings. Proprietary processes have been developed by Ruland to maintain superior fit, finish, and holding power. MCL-20-F is stamped with the Ruland name and bore size for ease of identification. Forged screws test beyond DIN 912 12.9 standards to ensure maximum holding power. MCL-20-F is machined from solid bar stock to a fine burr free finish and sourced exclusively from North American mills. Ruland uses 1215 lead-free steel with a proprietary black oxide finish that produces a fine glossy finish while increasing holding power and resisting corrosion. It is RoHS2 and REACH compliant and manufactured in our Marlborough, MA factory under strict controls using proprietary processes.

Product Specifications

Bore B	20 mm	Bore Tolerance	+0.050 mm / +.012 mm
Outer Diameter OD	40 mm	Clearance Diameter C MAX	47.4 mm
Width W	15 mm	Width Tolerance	+0.076 mm / -.254 mm
Forged Clamp Screw	M6x16	Screw Material	Alloy Steel
Hex Wrench Size	5.0 mm	Screw Finish	Black Oxide
Seating Torque	16 Nm	Screw Location R	14.73 mm
Number of Screws	1 ea	Material Specification	1215 Carbon Steel Bar
Temperature	-40°F to 350°F -40°C to 176°C	Finish Specification	Hot Process Black Oxide, Impregnated with Naphthenic Oil, Centrifugally Dried
Country of Origin	USA	Weight (lbs.)	0.2500
UPC	63452901203		