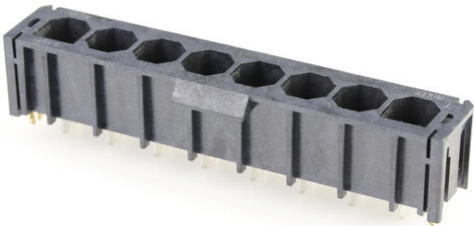




Part Number : [1720420802](#)
Product Description : Super Sabre Vertical Header, 8 Circuit, Short Solder Tail with Board Lock, Complies with UL1977 Finger Proof Standards, Glow-Wire Capable
Series Number : 172042
Status : Active
Product Category : PCB Headers and Receptacles



Documents & Resources

Drawings

[1720420802 sd.pdf](#)
[PK-43789-001-001.pdf](#)

3D Models and Design Files


[STEP AP242](#)
[SOLIDWORKS](#)
[Creo](#)
[Symbol and Footprint \(Multi-Format\)](#)
[SYM-172042-0802-001.zip](#)

Specifications

[PS-171825-001-001.pdf](#)
[TS-171825-001-001.pdf](#)

Product Environment Compliance

Compliance

GADSL/IMDS	Compliant with Exemption 44; 33
China RoHS	 per SJ/T 11365-2006
EU ELV	Not Relevant
Low-Halogen Status	Low-Halogen per IEC 61249-2-21
REACH SVHC	Not Contained per D(2025)4165-DC (25 June 2025)
EU RoHS	Compliant per EU 2015/863

Compliance Statements

- EU RoHS
- REACH SVHC
- Low-Halogen

Industry Documents

- IPC 1752A Class C
- IPC 1752A Class D
- Molex Product Compliance Declaration
- IEC-62474
- chemSHERPA (xml)

Substances of Interest

- PFAS

EU RoHS Certificate of Compliance

Additional Product Compliance Information

Part Details

General

Status	Active
Category	PCB Headers and Receptacles
Series	172042
Description	Super Sabre Vertical Header, 8 Circuit, Short Solder Tail with Board Lock, Complies with UL1977 Finger Proof Standards, Glow-Wire Capable
Application	Power, Signal, Wire-to-Board
Comments	Operating Temperature Per USCAR-2; Class 3
Component Type	PCB Header
Product Name	Super Sabre
UPC	887191565422

Agency

CSA	LR19980
UL	E29179

Electrical

Current - Maximum per Contact	30.0A per blade
-------------------------------	-----------------

Voltage - Maximum	600V AC (RMS)
-------------------	---------------

Physical

Breakaway	No
Circuits (Loaded)	8
Circuits (maximum)	8
Color - Resin	Black
Durability (mating cycles max)	25
First Mate / Last Break	No
Flammability	94V-0
Glow-Wire Capable	Yes
Lock to Mating Part	Yes
Material - Metal	Copper
Material - Plating Mating	Silver
Material - Plating Termination	Matte Tin, Nickel
Material - Resin	High Temperature Thermoplastic
Net Weight	9.546/g
Number of Rows	1
Orientation	Vertical
Packaging Type	Tray
PCB Retention	Yes
PC Tail Length	3.81mm
Pitch - Mating Interface	7.50mm
Plating min - Mating	0.025µm
Plating min - Termination	0.025µm
Polarized to Mating Part	Yes
Temperature Range - Operating	-40° to +125°C
Termination Interface Style	Through Hole

Solder Process Data

Max-Duration	30
Lead-Free Process Capability	SMC&WAVE
Max-Cycle	3
Max-Temp	260

Mates With / Use With

Mates with Part(s)

Description	Part Number
Super Sabre Single Row Receptacle Housings	<u>172672</u>