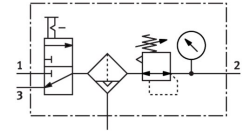


# Service unit combination MSB4-1/8:C3:J2-WP

Part number: 8233014

FESTO



## Data sheet

 General operating condition

Feature	Value
Size	4
Series	MS
Actuator lock	Rotary knob with detent can be closed with accessories
Mounting position	Vertical +/-5°
Grade of filtration	40 µm
Condensate drain	Fully automatic
Design	On-off valve/filter regulator
Max. condensate volume	19 ml
Controller function	Output pressure constant Via primary pressure compensation With secondary venting With return flow function
Bowl guard	Plastic bowl guard
Symbol	00991554
Pressure gauge (ANALOG) or Pressure display (DIGITAL)	With pressure gauge
Operating pressure	0.2 MPa ... 1.2 MPa
Operating pressure	2 bar ... 12 bar
Operating pressure	29 psi ... 174 psi
Pressure regulation range	0.05 MPa ... 1.2 MPa
Pressure regulation range	0.5 bar ... 12 bar
Pressure regulation range	7.25 psi ... 174 psi
Max. standard flow rate	850 l/min
Operating medium	Compressed air to ISO 8573-1:2010 [7:4:4] Inert gases
Note on operating and pilot medium	Lubricated operation possible (in which case lubricated operation will always be required)
Corrosion resistance class CRC	2 - Moderate corrosion stress
LABS (PWIS) conformity	VDMA24364-B1/B2-L
Storage temperature	-10 °C ... 60 °C
Air purity class at output	Compressed air to ISO 8573-1:2010 [7:4:4]
Media temperature	-10 °C ... 60 °C
Ambient temperature	-10 °C ... 60 °C
Product weight	510 g
Type of mounting	Via mounting bracket
Pneumatic connection, port 1	G1/8
Pneumatic connection, port 2	G1/8

<b>Feature</b>	<b>Value</b>
Pneumatic connection, port 3	G1/4
Note on materials	RoHS-compliant
Material seals	NBR
Material filter	PE
Material housing	Die-cast aluminium
Material bowl	PC