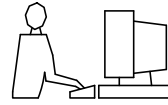
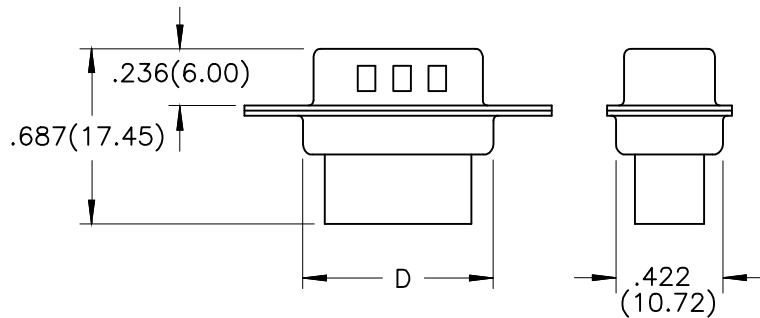
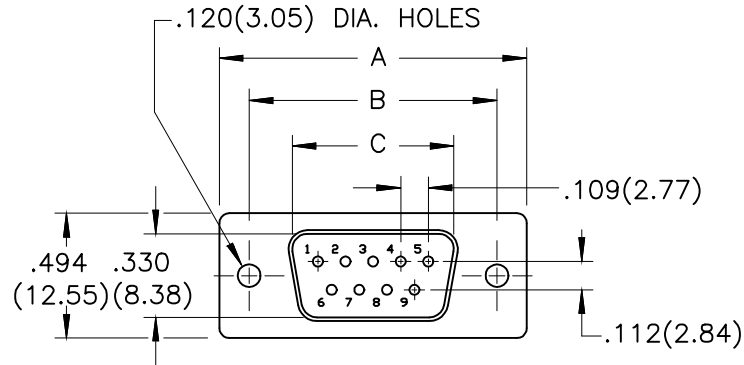


THIS IS A C.A.D. GENERATED DRAWING  
DO NOT MAKE MANUAL REVISIONS TO MASTER.



\* UNLESS OTHERWISE SPECIFIED TOLERANCES  
ON DECIMAL IS:



**1. MATERIALS:**

- 1.1 INSULATOR: PBT+30%G/F, UL 94V-0  
COLOR: WHITE
- 1.2 SHELL: STEEL, FRONT NICKEL PLATED,  
BACK TIN PLATED

**2. ELECTRICAL:**

- 2.1 CURRENT RATING: 3 AMPERES
- 2.2 DIELECTRIC WITHSTANDING VOLTAGE: 500VAC MIN
- 2.3 INSULATION RESISTANCE: 1000 MEGOHMS MIN.
- 2.4 WORKING TEMPERATURE: -55° TO +105°C

ORDER INFORMATION	DIMENSION(MM)				
PART NUMBER	SIZE	A±.010(0.25)	B±.010(0.25)	C±.010(0.25)	D±.010(0.25)
MHDBC09-SP-NW	9	1.213(30.81)	.984(24.99)	.666(16.92)	.759(19.28)
MHDBC15-SP-NW	15	1.545(39.25)	1.312(33.32)	.994(25.25)	1.092(27.75)
MHDBC25-SP-NW	25	2.088(53.05)	1.850(47.01)	1.534(38.96)	1.626(41.30)
MHDBC37-SP-NW	37	2.736(69.50)	2.500(63.50)	2.182(55.42)	2.260(57.40)



THIS SERIES FULLY CONFORMS TO THE  
EUROPEAN UNION DIRECTIVES 2002/95/EC  
AND 2002/96/EC FOR RoHS COMPLIANCY.



**MH CONNECTORS LTD.**

THESE DRAWINGS AND SPECIFICATIONS ARE THE  
PROPERTY OF MH CONNECTORS LTD. AND SHALL NOT  
BE REPRODUCED, COPIED OR USED AS THE BASIS FOR  
THE MANUFACTURE OR SALE OF APPARATUS WITHOUT  
WRITTEN PERMISSION.

DRAWN HALEY		DATE 06-27-14	
APPROVED		DATE	
SCALE	SHEET OF 1 OF 1	REV: 1.0	
DRAWING No MHDBCXX-SP-NW			