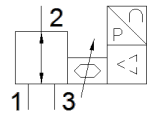
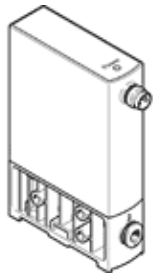


# proportional pressure regulator VEAB-L-26-D7-Q4-V1-1R1

Part number: 8046303

**FESTO**



## Data sheet

Feature	Value
Valve function	3-way proportional-pressure regulator
Type of piloting	direct
Type of reset	mechanical spring
Type of actuation	electrical
Assembly position	Any
Sealing principle	soft
Ambient temperature	0 ... 50 °C
Medium temperature	5 ... 50 °C
Storage temperature	-20 ... 70 °C
Dimensions W x L x H	18 mm x 60,5 mm x 85 mm
Pneumatic connection, port 1	QS-4
Pneumatic connection, port 2	QS-4
Pneumatic connection, port 3	QS-4
Material seals	NBR
Mounting type	Optional with through hole with accessories
Inlet pressure 1	0 ... 3 bar
Output pressure 2	0.005 ... 1 bar
Standard nominal flow rate	≥ 13 l/min
Standard nominal flow rate 2-3	≥ 12 l/min
Linearity error, FS	0.5 %
Repetition accuracy in ± %FS	0.4 %FS
Hysteresis FS	0.25 %FS
Temperature coefficient	0.05 %/K
Absolute accuracy in ± %FS at room temperature	0.75 %FS
Product weight	70 g
Operating medium	Compressed air in accordance with ISO8573-1:2010 [7:4:4] Inert gases
Note on operating and pilot medium	Lubricated operation not possible
Protection class	IP65
Authorisation	RCM Mark
KC mark	KC-EMV
CE mark (see declaration of conformity)	to EU directive for EMC
Materials note	Contains PWIS substances Conforms to RoHS
Corrosion resistance classification CRC	2 - Moderate corrosion stress
Operating voltage range DC	19 ... 29 V
Nominal operating voltage DC	24 V
Residual ripple	10 %
Setpoint value	0 - 10 V
Signal range, analogue output	0 - 10 V
Accuracy, analogue output FS	2 %FS
Max. electrical power consumption	1 W
Polarity protected	for all electrical connections
Short circuit strength	for all electrical connections

Feature	Value
Safety instructions	Safety position VEAA/VEAB
Type of display	LED
Electrical connection	Plug to EN 60947-5-2 M8x1 4-pin
Material housing	PA-reinforced