

Features

- Built in compliance with the construction and safety S1 specifications of standard EN 837-2
- Designed for industrial use.
- Dial size 100 mm
- IP67
- Fillable case
- Bottom connection
- Stainless Steel Case
- AISI 316L st.st. socket and bourdon tube
- Tempered glass window
- 1/2" BSP-Male
- Range 0/10 bar

RS PRO Bourdon tube pressure gauges stainless-steel construction

RS Stock No.: 152307



RS PRO is the own brand of RS. The RS PRO Seal of Approval is your assurance of professional quality, a guarantee that every part is rigorously tested, inspected, and audited against demanding standards. Making RS PRO the Smart Choice for our customers.

Product Description

Buy this product from www.rspro.com

These instruments are built in compliance with the construction and safety S1 specifications of standard EN 837-2.

They are designed for industrial use. They are suitable for tough working conditions and for aggressive fluids. Filling the case with dampening liquid prevents any condensation and the entrance of corrosive atmosphere increasing its resistance to vibrations and to pulsating pressures.

General Specifications

Mounting Type	Bottom Entry
Display type	Analogue
Series	RS 1.44.2
Case Material	Stainless Steel
Socket material	AISI 316L
Bourdon tube material	AISI 316L
Window Material	Tempered glass window
Ring Material	Stainless steel
Protection Degree	IP67

Mechanical Specifications

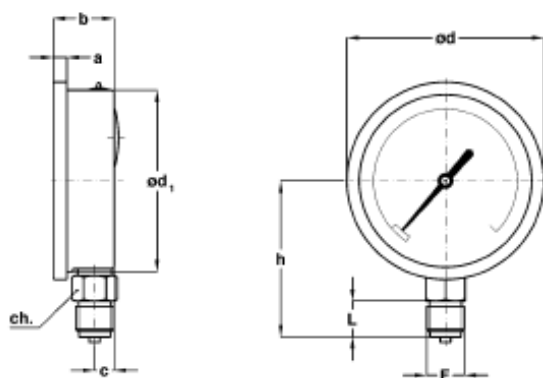
Pressure Range	0 → 10 bar
Working Pressure	75% of FSV for static pressure; 66% of FSV for pulsating pressure
Maximum Pressure Measurement	10 bar
Minimum Pressure Measurement	0 bar
Connection Size	1/2" BSP Male
Gauge Outside Diameter	100 mm
Over pressure limit (15 min max)	25% of FSV
Accuracy Class	1,6 as per EN 837-1
Minimum Operating Temperature	-25°C
Maximum Operating Temperature	+100°C
Calibrated	No

Approvals

Declarations	Directive 2014/68/EU - Pressure Equipment Directive (PED)
Standards Met	EN 837-1

Technical Specifications and Drawings

Filled Model – Bottom Connection



F	a	b	c	d	d1	h	L	Weight
G ½ A	7,5	34	11	110	101	87	20	0,4 kg

Dimensions: mm